

The Transaction Log / Excel Spreadsheet is an optional method for viewing the data gathered in the Transaction Log through either microMate or AccuMate. The Excel Spreadsheet has titles and headers so that each value viewed on the spreadsheet is well defined for ease of use for all users.

Software Requirements

Microsoft Excel 2003
 microMate for microLoad.net Rev. 00.07 (and above)
 AccuMate for AccuLoad III-X Rev. 10.14 (and above) OR
 Firmware in either microLoad.net or AccuLoad:
 Rev. 10.14 for AccuLoad Proms
 Rev. 00.07 Firmware for microLoad.net

Microsoft Excel 2007
 AccuMate for AccuLoad III.net Rev. 11.15 (and above)
 Firmware in AccuLoad:
 Rev. 11.00 or higher

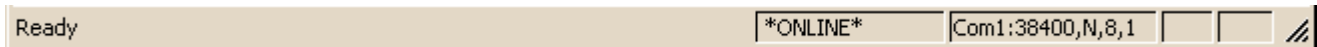
Procedure

Step One:

Connect microLoad/AccuLoad III to PC via serial communications or Ethernet connection. [Refer to Application Bulletin AB06064 for connecting via Ethernet or Slip TCP/IP.]

Step Two:

Open the microMate/AccuMate program and connect the software to the preset device so a communications link is established. The AccuMate/microMate should show "online" status at the bottom of the screen with the preset device as shown below.



Step Three:

Click on <<Tools>> and then select <<Transaction Log to File>>.

Step Four:

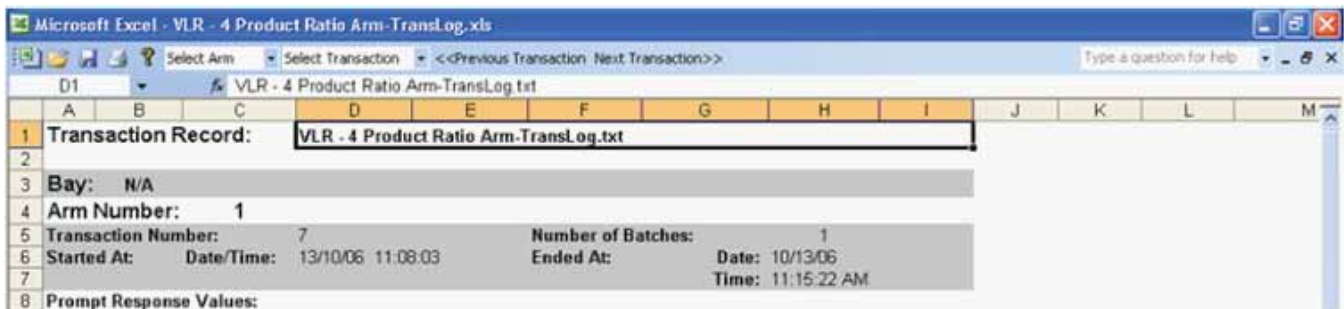
When the dialog box appears rename the file, as appropriate, choosing the directory of choice to save the log in, and click on the <<Save>> button. [It is recommended that you save the test file in an appropriate user-defined directory.]

Step Five:

The Excel spreadsheet will automatically appear and contain the transaction log information filled into the template.

For Microsoft Excel 2003 users:

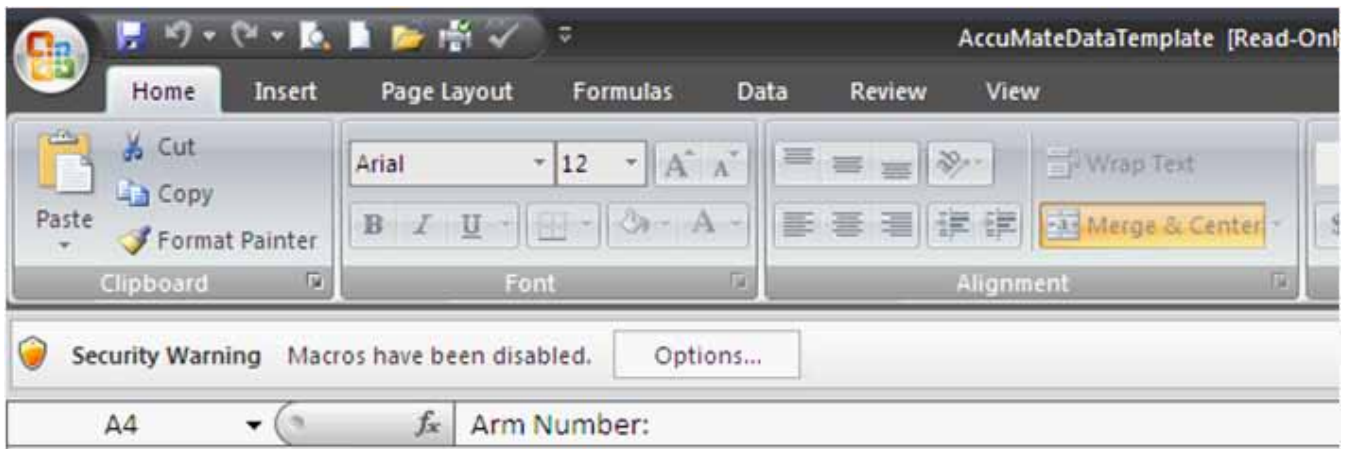
Refer to the titles above each column for description of what transaction log information is given. Make sure to SAVE the spreadsheet if you want to view it at a later date.



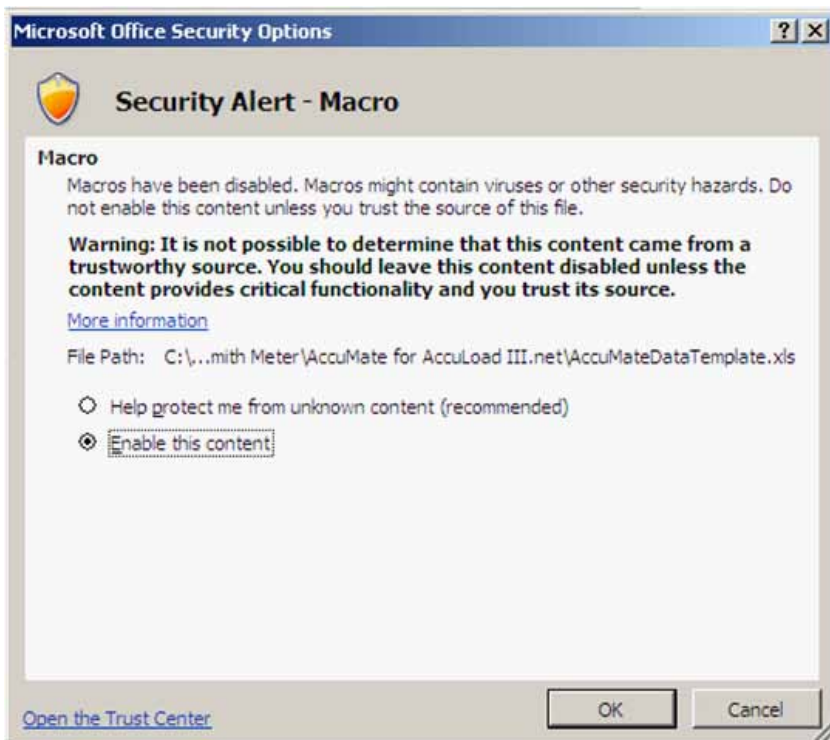
For Microsoft Excel 2007 (or later) users:

Macros must be enabled prior to viewing the transactions.

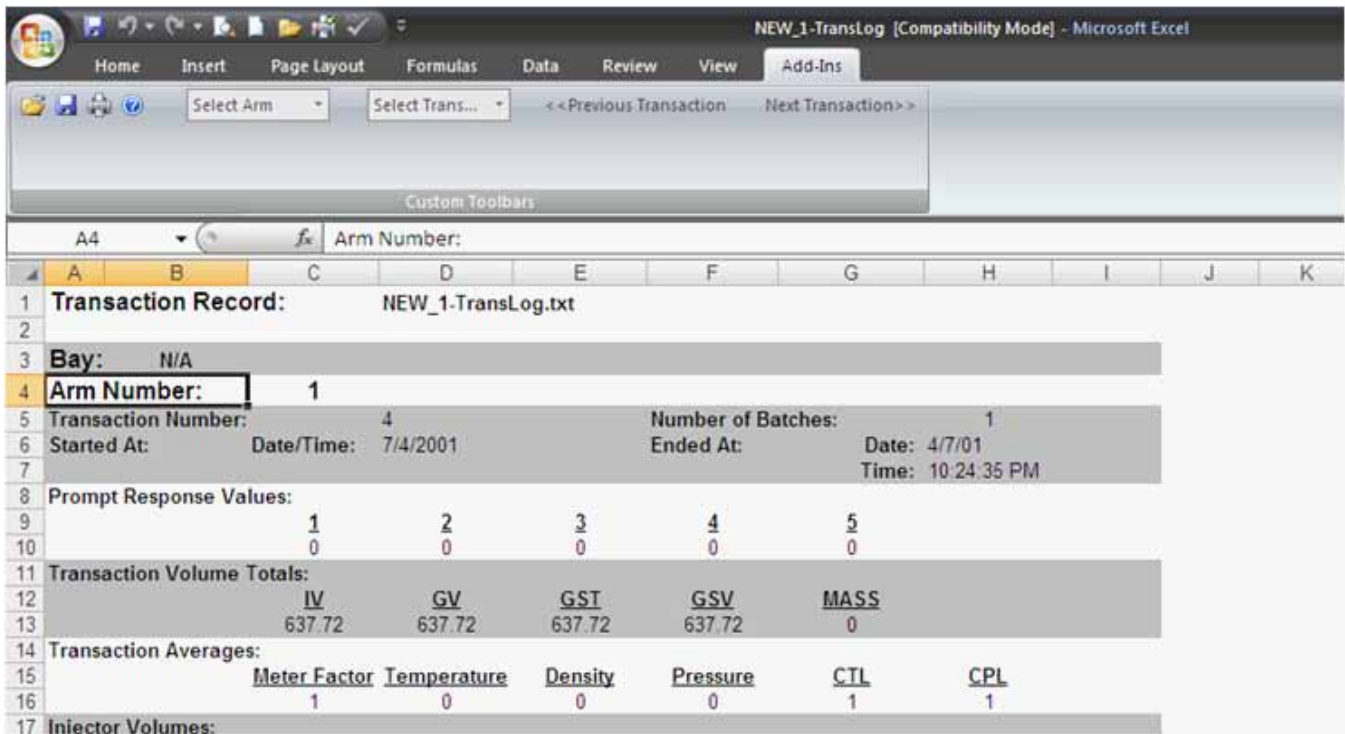
To enable macros, click the “Options...” button next to the security warning.



When the “Security Alert – Macro” window appears, select the “Enable this content” radio button and click “OK.”



Then click the “Add-ins” tab on the ribbon at the top of the Excel page. Refer to the titles above each column for description of what transaction log information is give. Make sure to SAVE the spreadsheet if you want to view it at a later date.



As seen above the Excel toolbar, the user is able to select the appropriate arm (for AccuLoad only; microLoad does not have this option), select <<Transaction>>, or simply scroll through each transaction one mouse click at a time. This allows for easy navigation to find any transaction whether it is a recent transaction or many transactions before.

Note: If the template is mistakenly closed without saving the loaded transaction log data, then this data can be quickly and easily reloaded into the template without needing to download the log data again.

For AccuMate, go to:

"C:\Program Files\Smith Meter\AccuLoad IIIx" and open AccuMateDataTemplate.xls

For microMate, go to:

"C:\Program Files\Smith Meter\microMate for microLoad.net: and open MicroMateDataTemplate.xls

Once the blank Excel template is open, an open file dialog box will immediately appear. Choose the text file that contains the appropriate data. This is the text file that was created by AccuMate or microMate during the transaction log download.

Revisions included in AB06068 Issue/Rev. 0.1 (9/11):
Added Trans Spreadsheet.

The specifications contained herein are subject to change without notice and any user of said specifications should verify from the manufacturer that the specifications are currently in effect. Otherwise, the manufacturer assumes no responsibility for the use of specifications which may have been changed and are no longer in effect.

Contact information is subject to change. For the most current contact information, visit our website at www.fmctechnologies.com/measurementsolutions and click on the "Contact Us" link in the left-hand column.

Headquarters:

500 North Sam Houston Parkway West, Suite 100, Houston, TX 77067 USA, Phone: +1 (281) 260 2190, Fax: +1 (281) 260 2191

Measurement Products and Equipment:

Erie, PA USA +1 (814) 898 5000

Ellerbek, Germany +49 (4101) 3040

Barcelona, Spain +34 (93) 201 0989

Beijing, China +86 (10) 6500 2251

Buenos Aires, Argentina +54 (11) 4312 4736

Burnham, England +44 (1628) 603205

Dubai, United Arab Emirates +971 (4) 883 0303

Los Angeles, CA USA +1 (310) 328 1236

Melbourne, Australia +61 (3) 9807 2818

Moscow, Russia +7 (495) 5648705

Singapore, +65 6861 3011

Integrated Measurement Systems:

Corpus Christi, TX USA +1 (361) 289 3400

Kongsberg, Norway +47 (32) 286700

Dubai, United Arab Emirates +971 (4) 883 0303

Visit our website at www.fmctechnologies.com/measurementsolutions