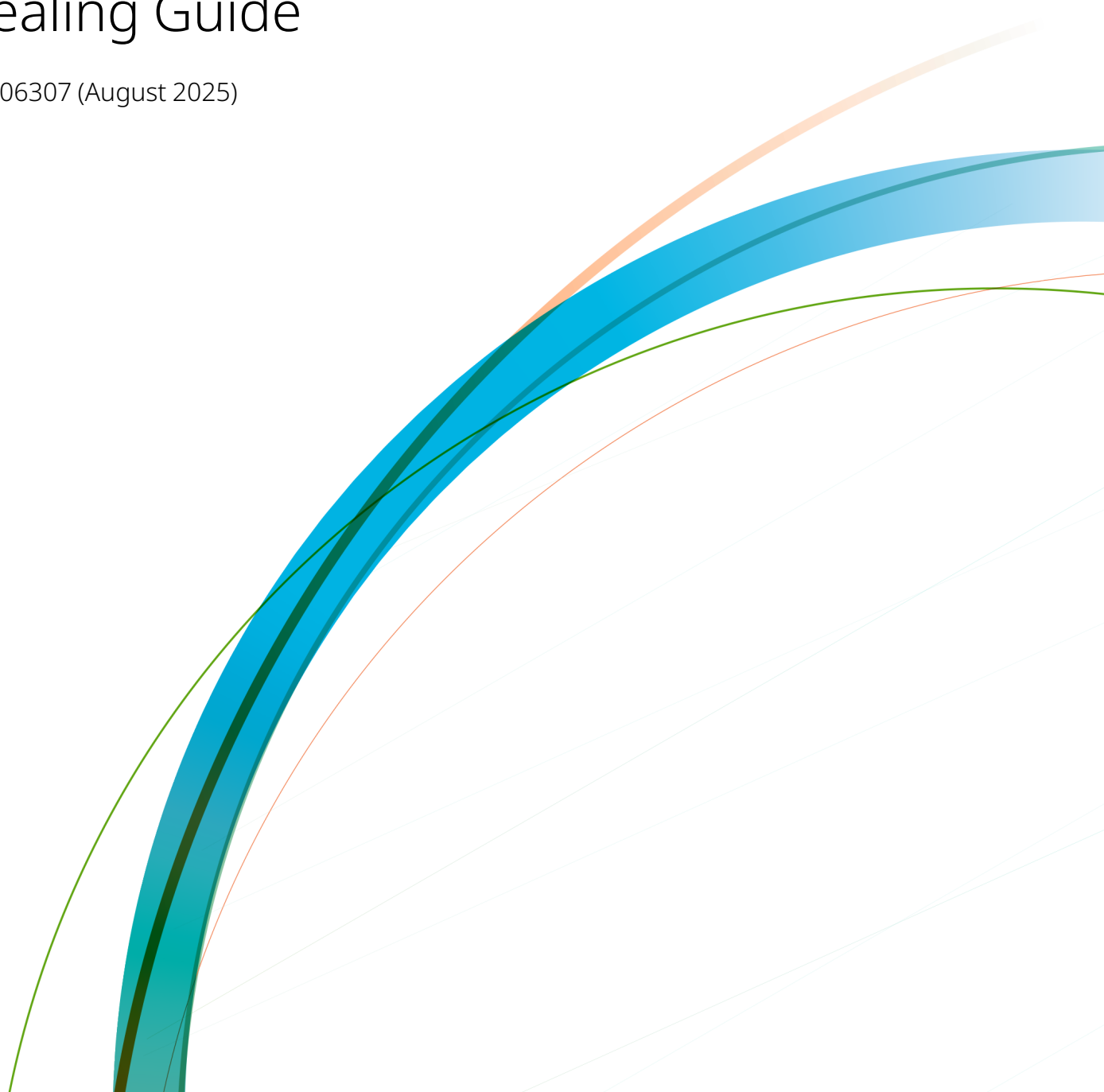




Fusion4 Portal

Sealing Guide

MN06307 (August 2025)



Contents

- 1 General..... 1
 - 1.1 Product Introduction 1
 - 1.2 Target Group for this Manual 1
- 1 Safety..... 2
 - 1.3 Safety Conventions 2
 - 1.3.1 Warnings 2
 - 1.3.2 Cautions 2
 - 2.1 Liability 3
- 3 System Description..... 4
 - 3.1 General 4
 - 3.2 W&M License 4
 - 3.2.1 Section Menu 4
 - 3.2.2 About window 5
- 4 Creating W&M User Accounts..... 6
- 5 Signing the W&M Relevant Configuration Data..... 14
- 6 Sealing the Application..... 24

1 General

1.1 Product Introduction

Fusion4 Portal can be delivered in two versions:

- Weights and Measures (W&M) compliant (e.g. MID)
- Non-W&M compliant

MID (Measuring Instrument Directive) refers to the European directive 2004/22/EC regarding measuring instruments.

When a W&M compliant Bill of Lading is required, then Fusion4 Portal and the device that performs the transaction must be sealed by a representative of the W&M authorities.

1.2 Target Group for this Manual

This manual is intended mainly for:

- Representatives of the W&M authorities assigned to seal Fusion4 Portal.
- W&M accredited users assigned to seal Fusion4 Portal.

1 Safety

1.3 Safety Conventions

1.3.1 Warnings

The following warning formatting used in the manual recommends your attention to prevent personal injuries or dangerous situations.

WARNING: General warning. It is always explained by text.

1.3.2 Cautions

The following caution formatting and symbols used in the manual recommends your attention to prevent damages to the equipment.

CAUTION: General caution information.

CAUTION:  Electrostatic discharge (ESD) sensitive device.

2.1 Liability

Guidant disclaims any responsibility for personal injury or damage to equipment caused by:

- Deviation from any of the prescribed procedures
- Execution of activities that are not prescribed
- Neglect of the safety regulations for handling tools and inflammable fluids, and use of electricity

The contents, descriptions, and specifications in this manual are subject to change without notice. Guidant accepts no responsibility for any errors that may appear in this manual.

WARNING: Only personnel that are authorized by the customer are allowed to make changes on the Fusion4 Portal system. All modifications must be in accordance to the guidelines as set forth by Guidant. Modifications not authorized by Guidant will invalidate the approval certificates.

3 System Description

3.1 General

In addition to the standard configuration, Fusion4 Portal can be set up for W&M compliant printing. The difference between the standard and W&M compliant version is that part of the configuration data will be sealed by the W&M authorities. After being sealed, the user cannot change the legal relevant data anymore without breaking the seal. The status of the seal will become visible on the Bill of Lading printout (1010 CB, MSC-L and SSC-B) and shows if the content is W&M approved or not.

CAUTION: Before you can seal the W&M relevant configuration data, the basic configuration to get Fusion4 Portal running must have been completed. Refer to the Installation & Operation Manual Fusion4 Portal for more information.

3.2 W&M License

Sealing of Fusion4 Portal and subsequent printing of W&M certified Bills of Lading is only possible if the appropriate W&M license is available. You can check this by means of:

- W&M option in the section menu, see [Section 3.2.1: Section Menu](#)
- About window, see [Section 3.2.2: About window](#)

3.2.1 Section Menu

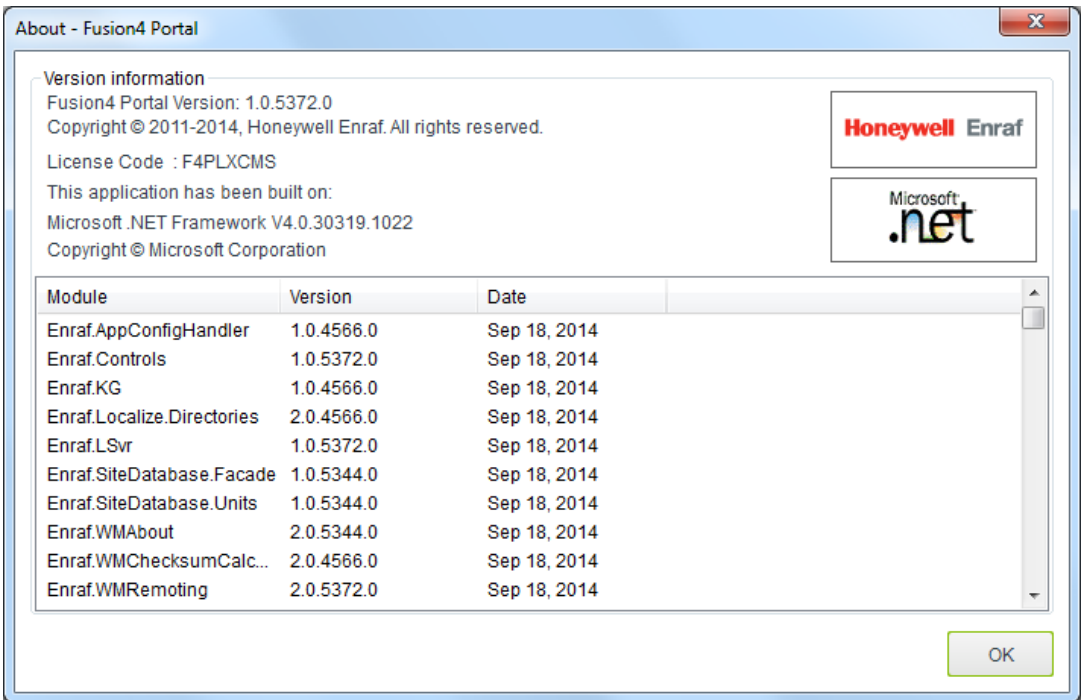
If a W&M license is available, the W&M option in the section menu is available. This option enables the W&M authorities to seal the W&M relevant configuration data.



If a W&M license is not available, the W&M option in the section menu is not available.

3.2.2 About window

When you select About... from the Help menu, the About window is displayed. This window provides information about the versions of the Fusion4 Portal modules.



4 Creating W&M User Accounts

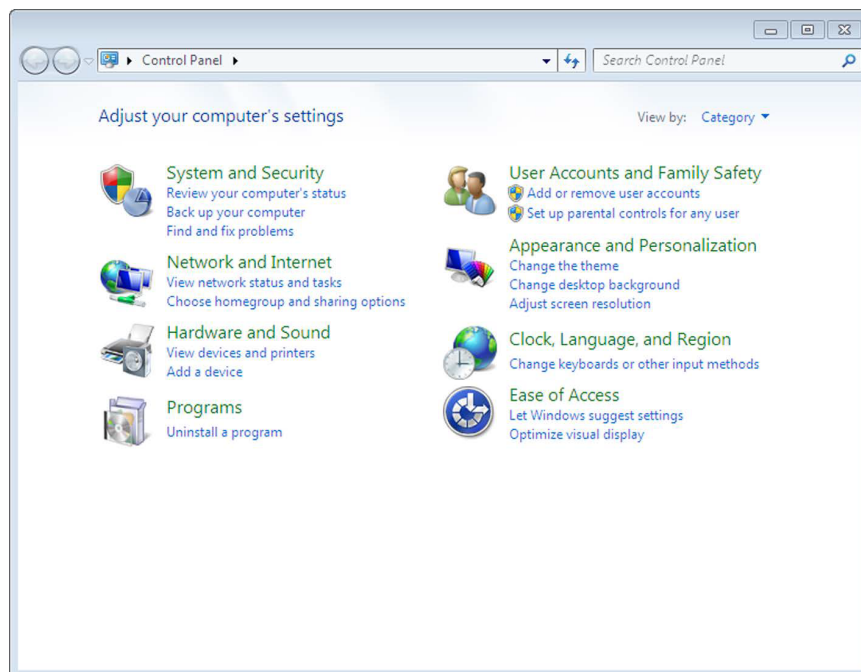
In a W&M compliant Fusion4 Portal system two special user accounts have to be created:

- W&MOfficial
Intended for representatives of the W&M authorities assigned to seal Fusion4 Portal.
- W&MAccredited
Intended for W&M accredited users assigned to seal Fusion4 Portal, i.e. a Honeywell Enraf service engineer authorized by the W&M authorities.

Both user accounts are a member of the F4PAdministrators user group, and have exclusive privilege to sign the W&M relevant configuration data and seal the application.

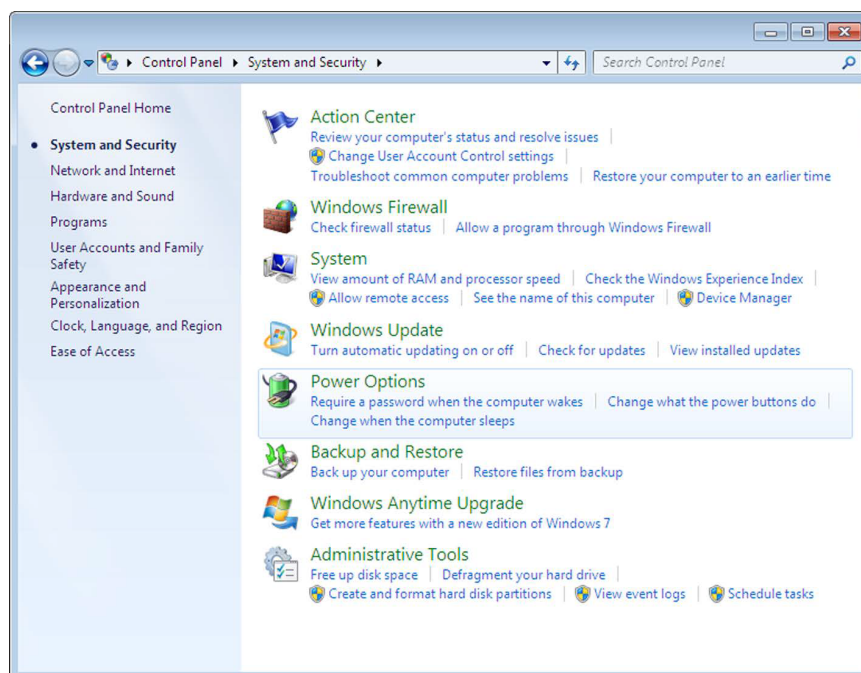
To create either the W&MOfficial or the W&MAccredited user account, perform the following steps:

1. Log on to the computer with the “mngr” user account.
2. From the Start menu select Control Panel. The Control Panel is displayed.



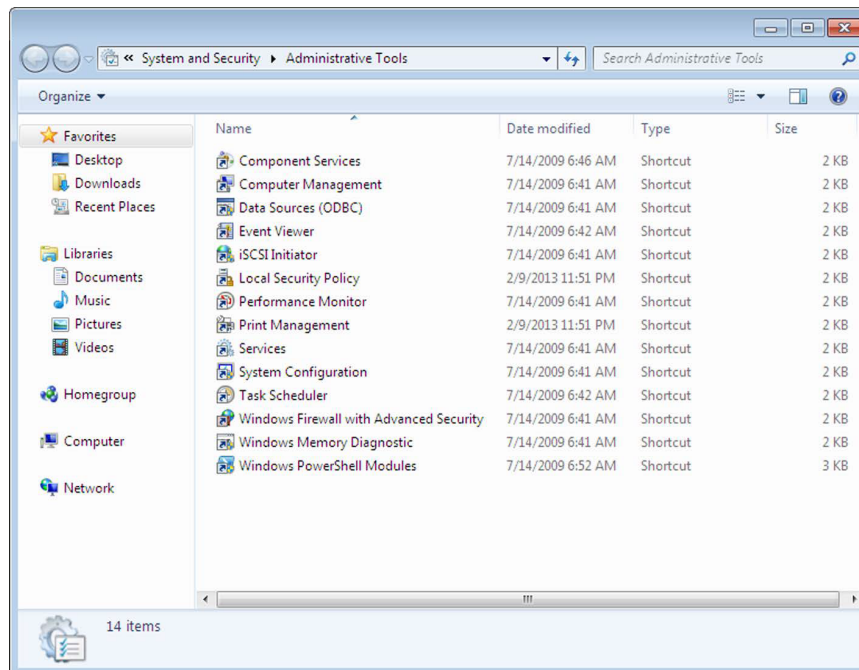
3. Click System and Security.

The System and Security control panel is displayed.



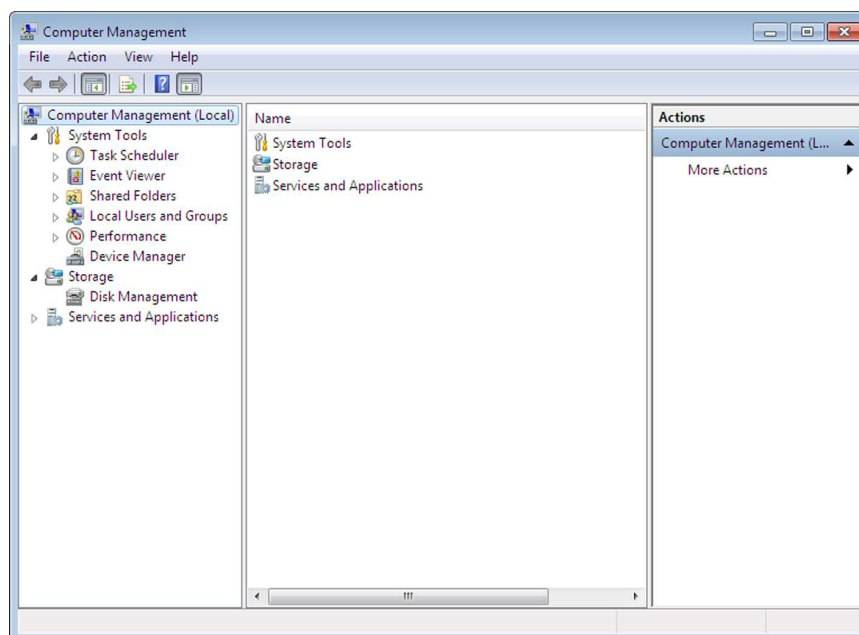
4. Click Administrative Tools.

The Administrative Tools control panel is displayed.

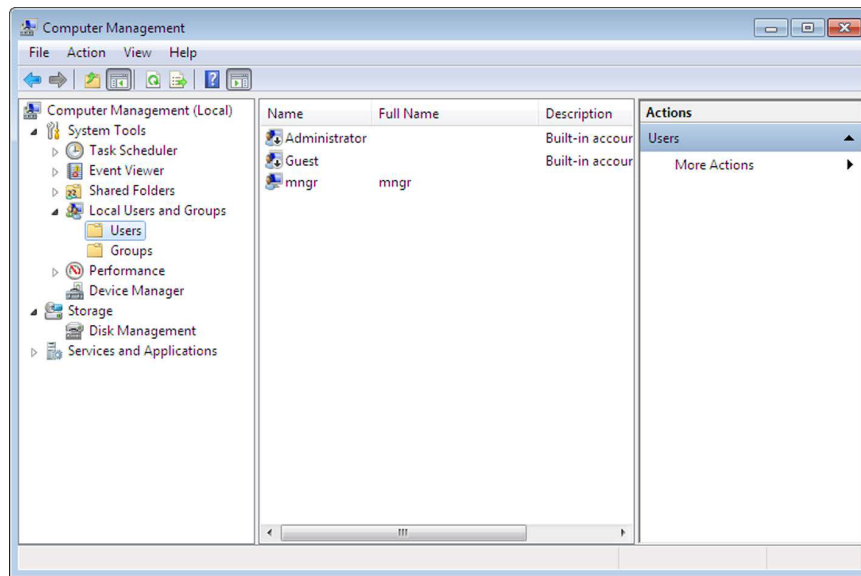


5. Double-click Computer Management.

The Computer Management window is displayed.



6. Under System Tools select Local Users and Groups | Users. The list of user accounts is displayed.



- From the Action menu select New User.... The New User window is displayed.

NOTE: You can also right-click Users, and then select New User.

The 'New User' dialog box is shown with the following fields and options:

- User name: W&MOfficial
- Full name: (empty)
- Description: (empty)
- Password: (masked with dots)
- Confirm password: (masked with dots)
- ☒ User must change password at next logon
- ☐ User cannot change password
- ☐ Password never expires
- ☐ Account is disabled

Buttons at the bottom: Help, Create, Close.

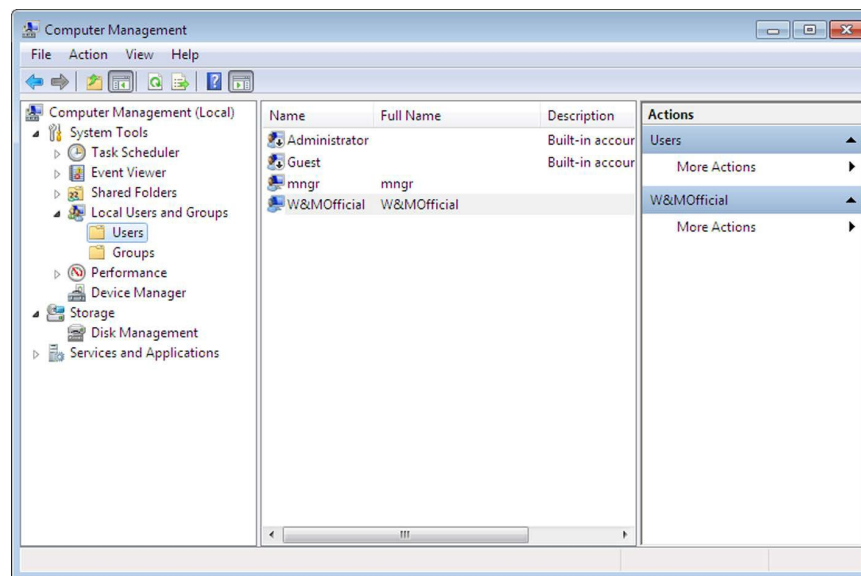
- Enter the properties of the user account. The properties are described in the following table.

Figure 4-1: Description of user account properties

Field	Description
User name	<ul style="list-style-type: none">• Enter W&MOfficial when you are creating a W&MOfficial user account.• Enter W&MAccredited when you are creating a W&MAccredited user account.
Password	Enter the password for this user account.
Confirm password	Re-enter the password for this user account.

9. Click the Create button to create the user account. Then click the Close button to close the New User window.

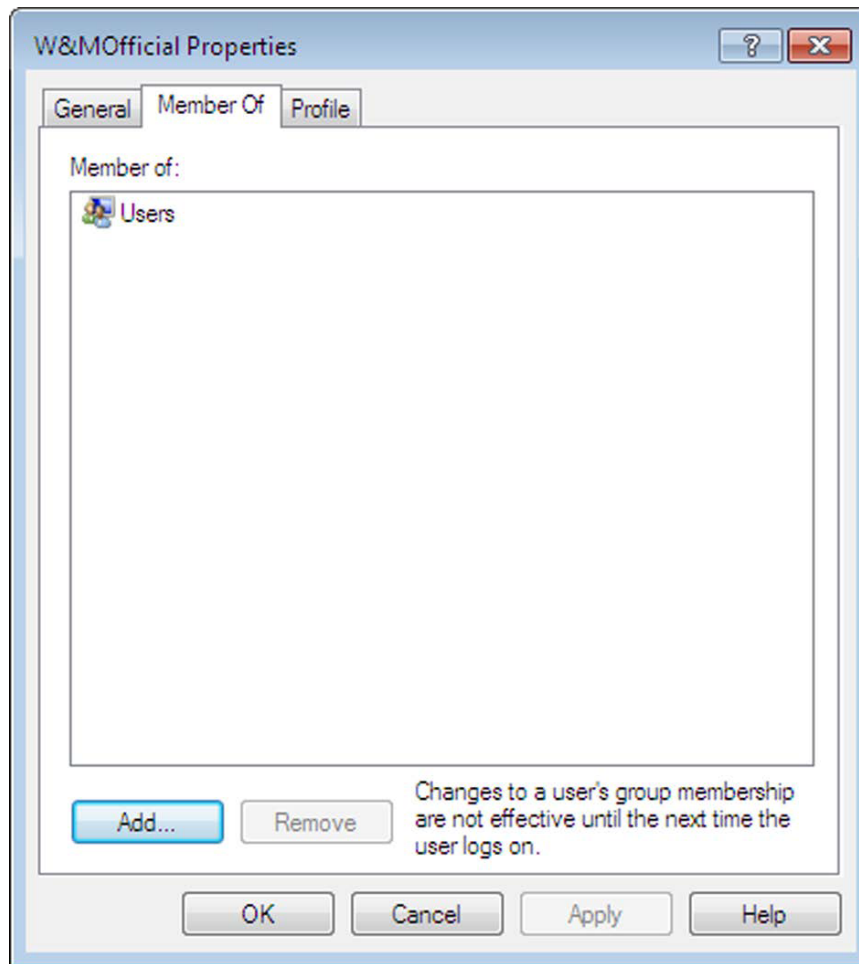
The user account is created and shown in the list of user accounts.



10. In the list of user accounts select the user account you just created.
11. From the Action menu select Properties.

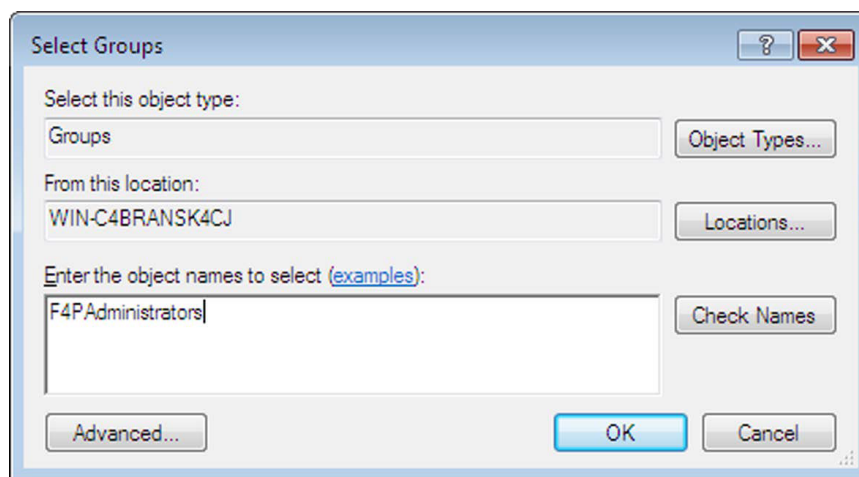
The User Account Properties window is displayed.

NOTE: You can also right-click the user account in the list of user accounts, and then select Properties.



12. On the Member Of tab click the Add... button.

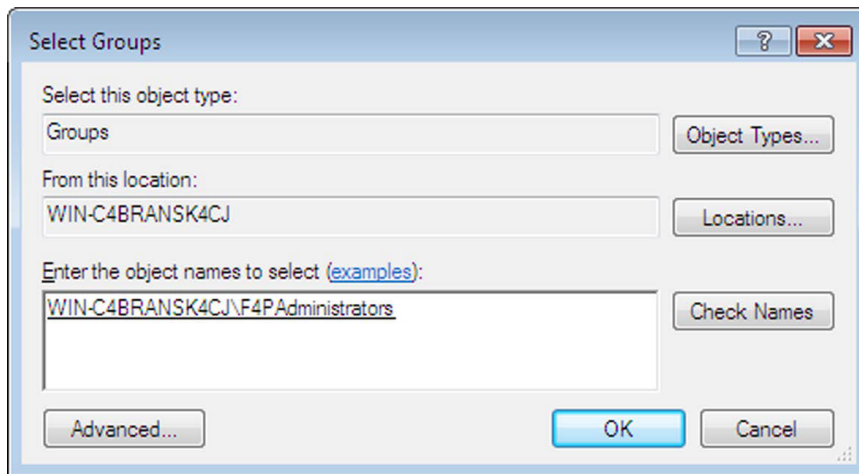
The Select Groups window is displayed.



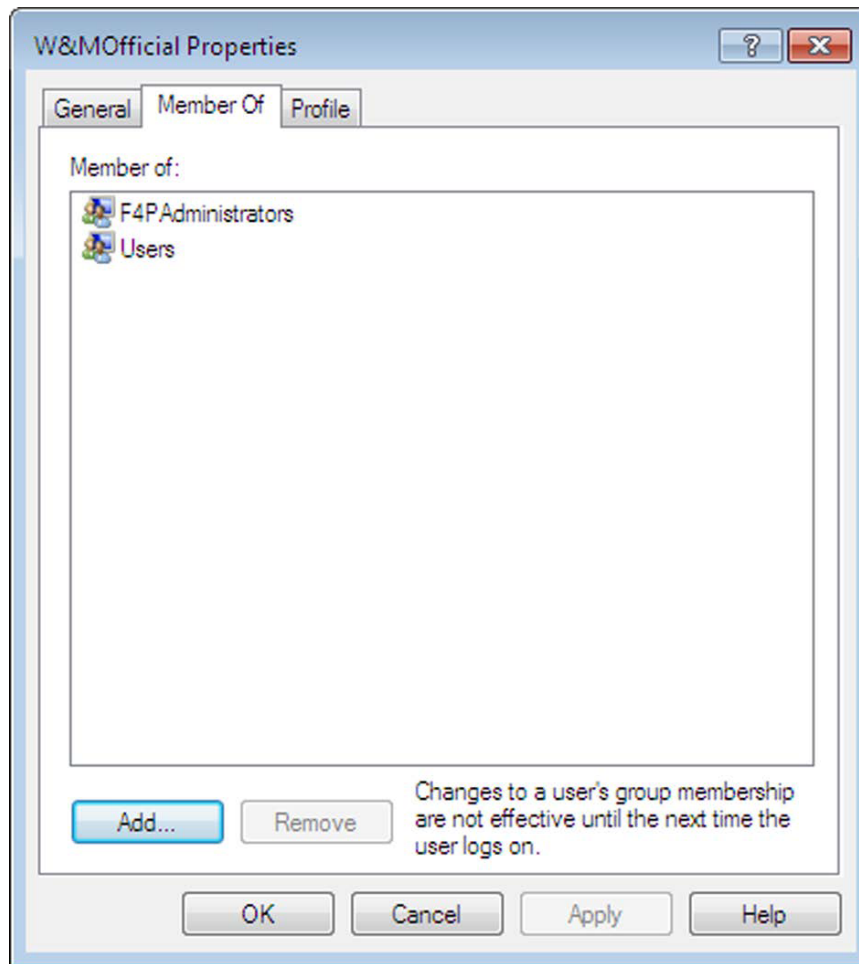
13. Under Enter the object names to select enter F4PAdministrators.

Then click the Check Names button.

If the name of the user group you entered is located, the name including its location will be displayed in the text box.



14. Click the OK button to save the changes and then close the window. The User Properties window is displayed. The F4PAdministrators user group is listed under Member Of.



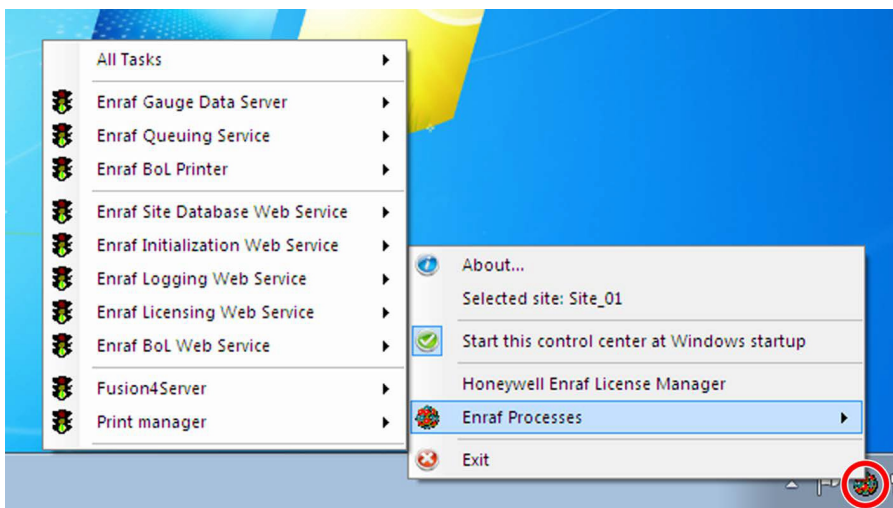
15. Click the Apply button. Then click the OK button.

The Properties window is closed. The user account you created is now a member of the F4PAdministrators user group.

5 Signing the W&M Relevant Configuration Data

The first step in sealing an application is to send and sign the W&M relevant configuration data of the Fusion4 Portal OPC scanner module and then send and sign the W&M relevant configuration data of the Fusion4 Portal BoL printer module. By signing the W&M relevant configuration data, you give this data your mark of approval.

NOTE: Before sending and signing the W&M relevant configuration data, check in the Enraf Process Control Center (EPCC) if both the Enraf BoL Printer and Fusion4Server services are running. If these services are not running, start them. To view the EPCC user interface, right-click the EPCC icon in the system tray.



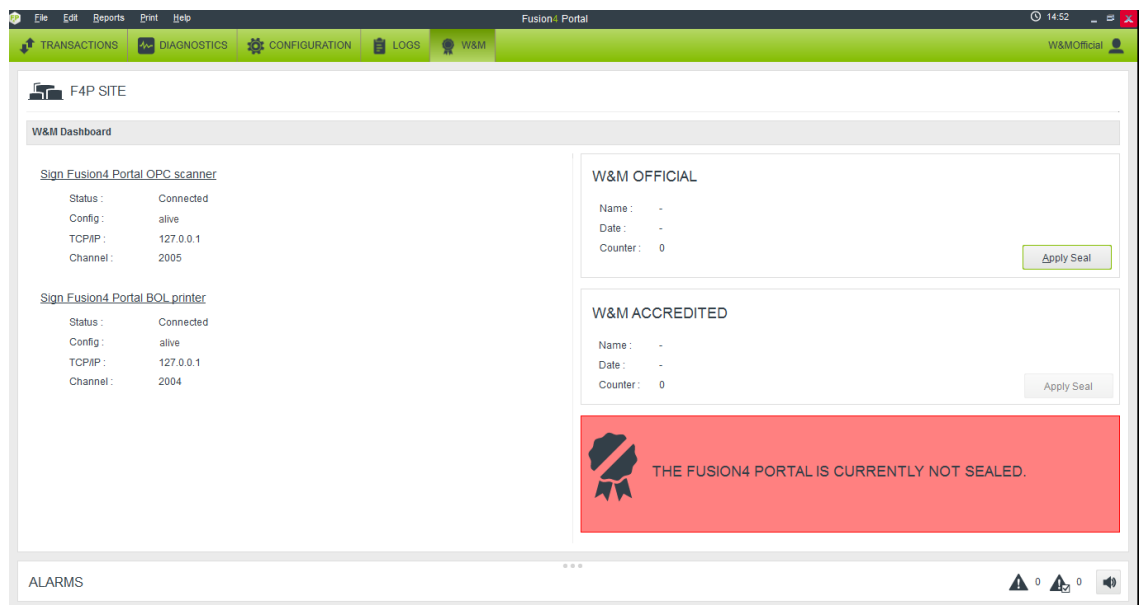
To send and then sign the W&M relevant configuration data, perform the following steps:

1. Log on to the PC as W&MOfficial or W&MAccredited.
2. From the Start menu select All Programs | Enraf | Fusion4 Portal. Fusion4 Portal is launched and the main window of Fusion4 Portal is displayed.



3. Click the W&M tab.

The W&M Dashboard is displayed.



The left part of the W&M Dashboard contains two sections:

- The Sign Fusion4 Portal OPC scanner section gives access to the W&M relevant configuration data of the Fusion4 Portal OPC Scanner module.

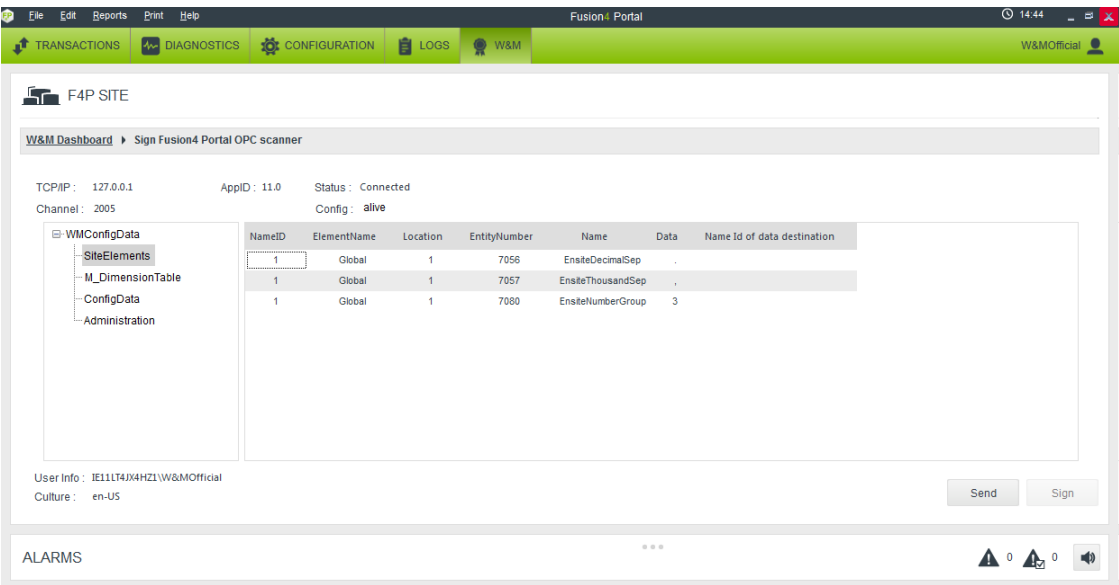
- The Sign Fusion4 Portal BoL printer section gives access to the W&M relevant configuration data of the Fusion4 Portal BoL printer module.

Both sections display the following information.

Status Item	Description
Status	<p>Displays the status of the OPC scanner module / BoL printer module. The following statuses are possible:</p> <ul style="list-style-type: none">• Not Connected The module is not started or cannot be detected.• Connected The module is started and can be reached.
Config	<p>Displays the status of the W&M relevant configuration data. The following statuses are possible:</p> <ul style="list-style-type: none">• alive The module is alive and waiting for W&M relevant configuration data.• wm configured The module is alive and W&M relevant configuration data is provided.• signed The module is alive, W&M relevant configuration data is provided, and the module is ready to be sealed.• approved The module is alive, running with the received W&M relevant configuration data, and sealed.
TCP/IP	Displays the IP address of the destination PC / network card.
Channel	Displays the number of the used TCP/IP communication path.

4. In the Sign Fusion4 Portal OPC scanner section, check if the status of the Fusion4 Portal OPC scanner module is "Connected" and the Config status is "alive".
5. Click the Sign Fusion4 Portal OPC scanner link.

The Sign Fusion4 Portal OPC scanner window is displayed.

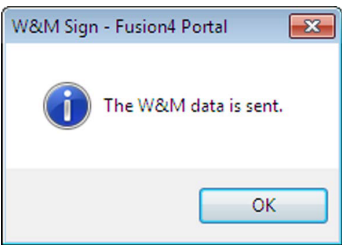


In addition to the information displayed in the W&M Dashboard, this window displays the following information.

Status Item	Description
AppID	Displays the ID of the application.
User info	Displays the user account that is logged in: W&MOfficial or W&MAccredited.
Culture	Displays the user interface and BoL locale.

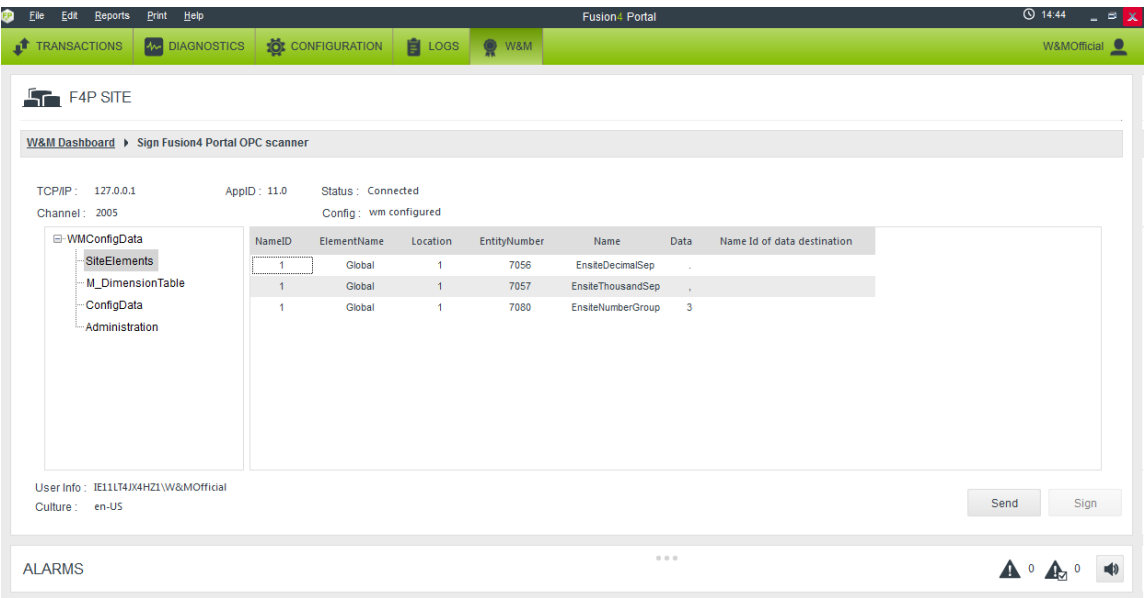
- 6. Check if the W&M relevant configuration data of the Fusion4 Portal OPC scanner module is correct.
- 7. If correct, click the Send button to send the W&M relevant configuration data.

The following dialogue box is displayed:

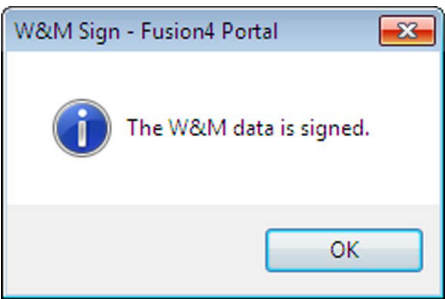


- 8. Click the OK button to close the dialogue box.

The Config status changes from “alive” to “wm configured”.

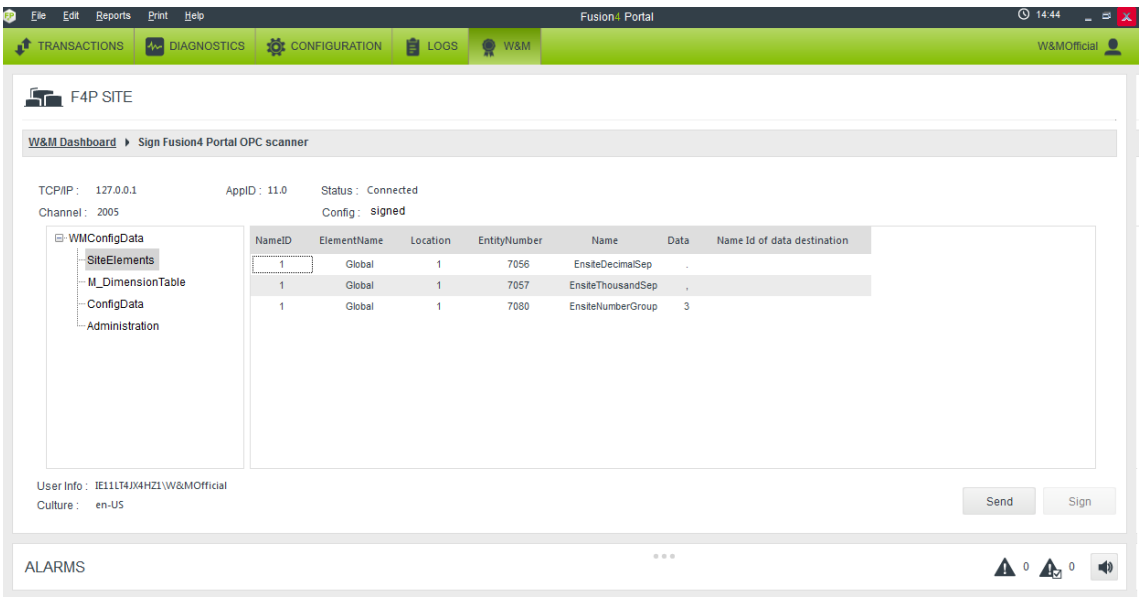


9. Click the Sign button to sign the W&M relevant configuration data. The following dialogue box is displayed:



10. Click OK to close the dialogue box.

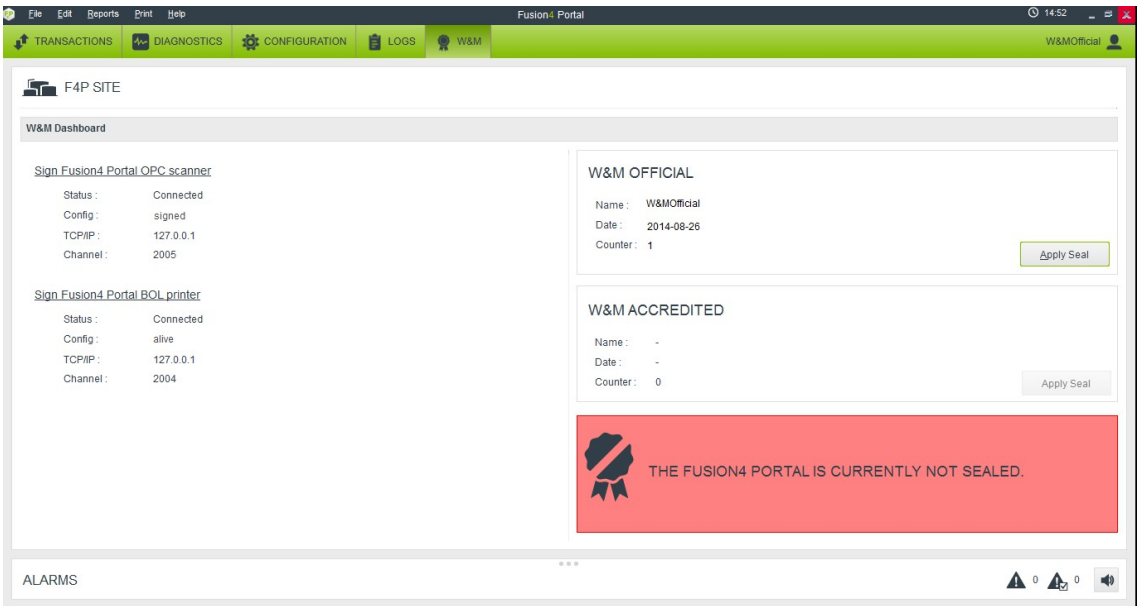
The Config status changes from “wm configured” to “signed”.



11. Click the W&M tab to return to the W&M Dashboard.

The W&M Dashboard is displayed.

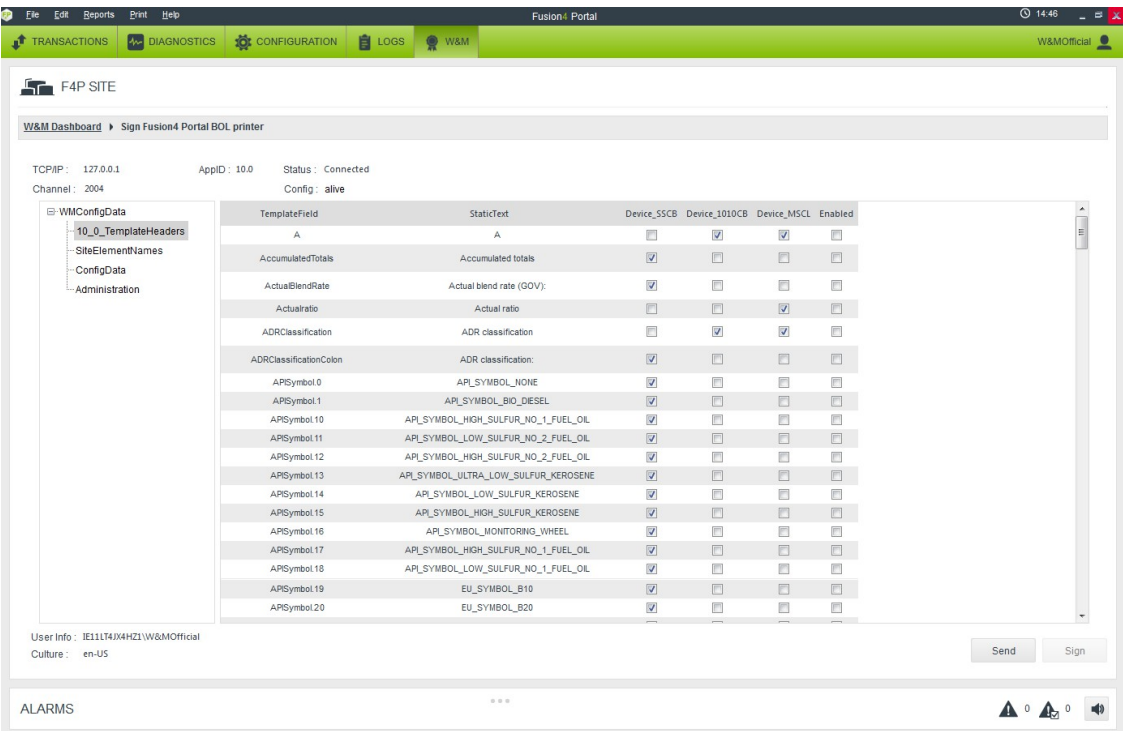
NOTE: You can also click the W&M Dashboard link to return to the W&M Dashboard.



12. In the Sign Fusion4 Portal BoL Printer section check if the status of the Fusion4 Portal BoL Printer module is “Connected” and the Config status is “alive”.

13. Click the Sign Fusion4 Portal BoL printer link.

The Sign Fusion4 Portal BoL printer window is displayed.

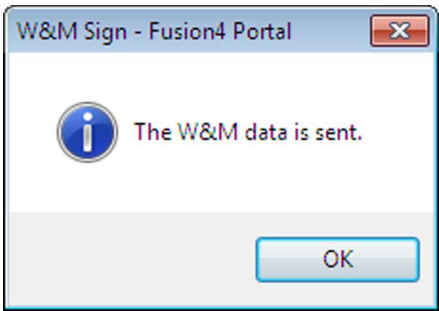


In addition to the information displayed in the W&M Dashboard, this window displays the following information.

Status Item	Description
AppID	Displays the ID of the application.
User info	Displays the user account that is logged in: W&MOfficial or W&MAccredited.
Culture	Displays the user interface and BoL locale.

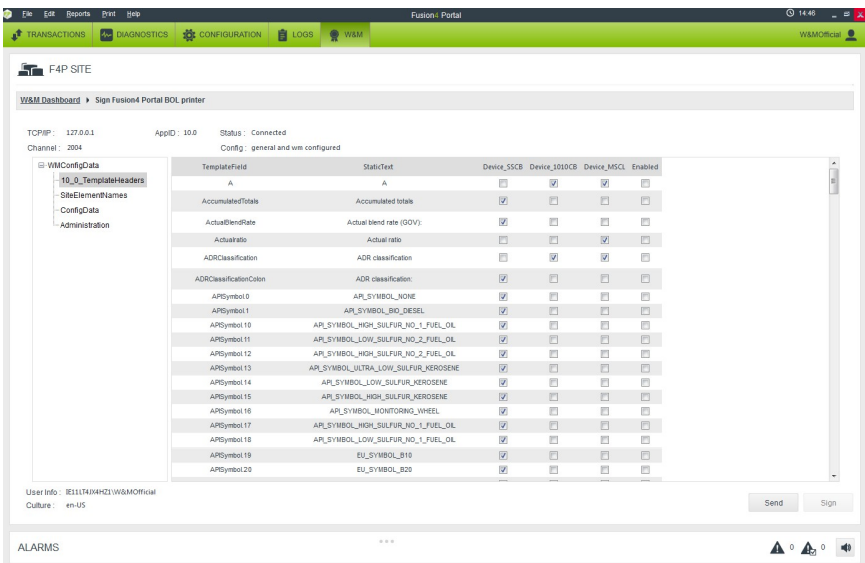
- 14. Check if the W&M relevant configuration data of the Fusion4 Portal BoL printer module is correct.
- 15. If correct, click the Send button to send the W&M relevant configuration data.

The following dialogue box is displayed.



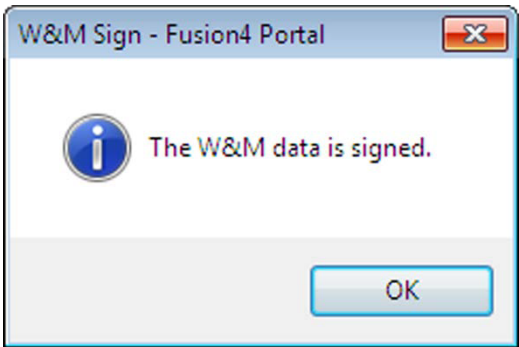
16. Click the OK button to close the dialogue box.

The Config status changes from “alive” to “wm configured”.



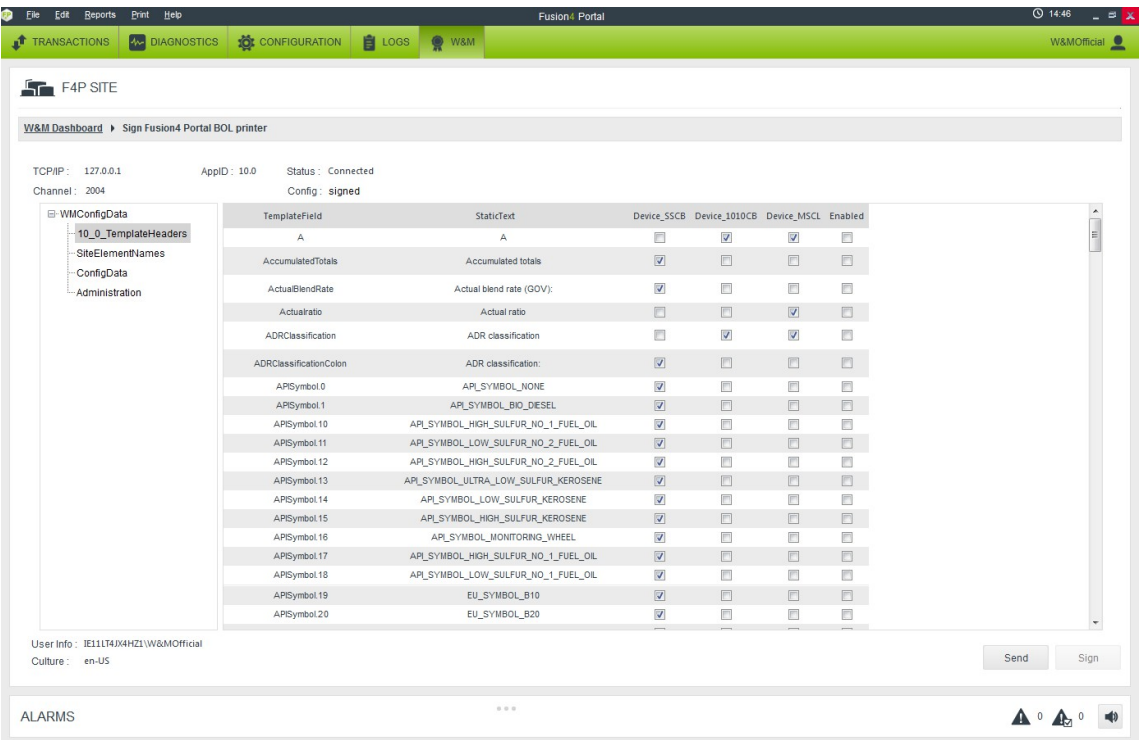
17. Click the Sign button to sign the W&M relevant configuration data.

The following dialogue box is displayed.



18. Click OK to close the dialogue box.

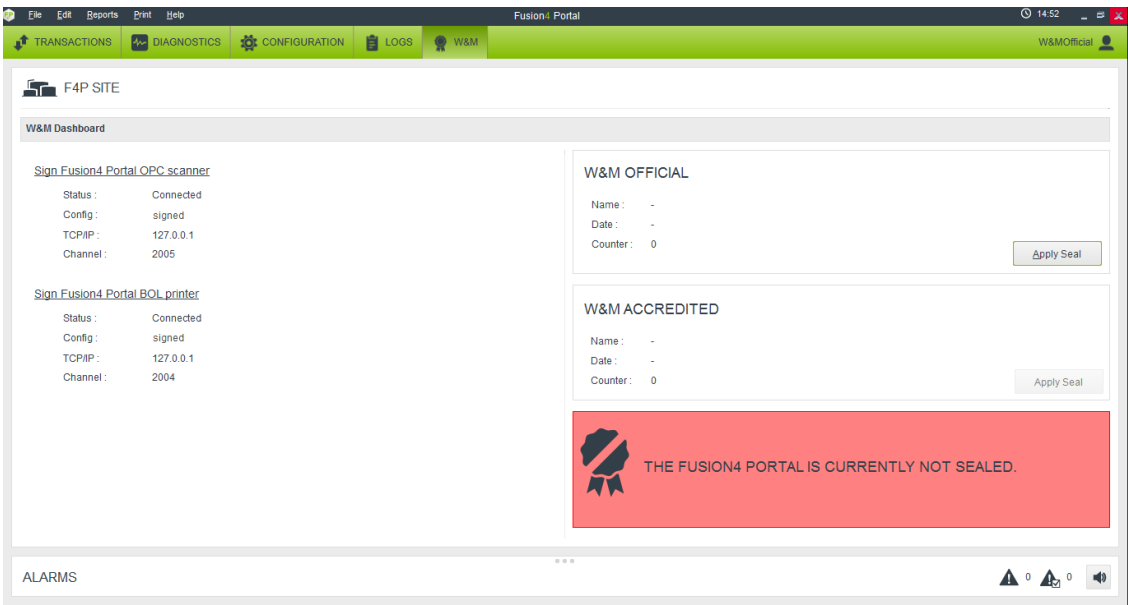
The Config status changes from “wm configured” to “signed”.



19. Click the W&M tab to return to the W&M Dashboard.

The W&M Dashboard is displayed.

NOTE: You can also click the W&M Dashboard link to return to the W&M Dashboard.

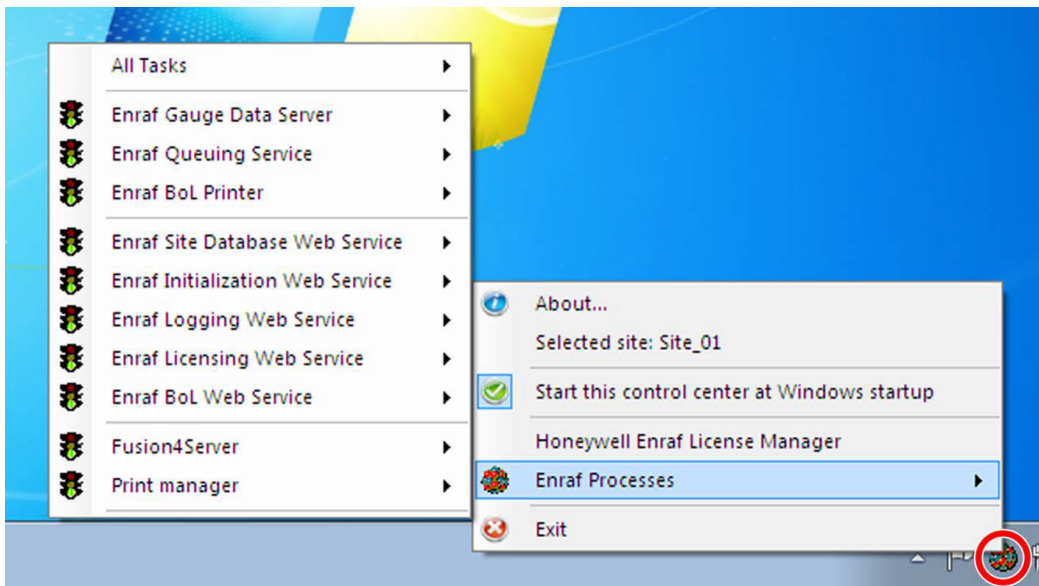


When the W&M relevant configuration data for both the Fusion4 Portal OPC scanner module and the Fusion4 Portal BoL printer module is signed, you can seal the application (see [Section 6: Sealing the Application](#)).

6 Sealing the Application

When the W&M relevant configuration data for both the Fusion4 Portal OPC scanner module and the Fusion4 Portal BoL printer module is signed, you can seal the application. By sealing the application, a user cannot change the W&M relevant configuration data without breaking the seal. The status of the seal will become visible on the printout and shows if the content is W&M approved or not.

NOTE: Before sealing the W&M relevant configuration data, check in the Enraf Process Control Center (EPCC) if both the Enraf BoL Printer and the Fusion4Server services are running. If these services are not running, start them. To view the EPCC user interface, right-click the EPCC icon in the system tray.



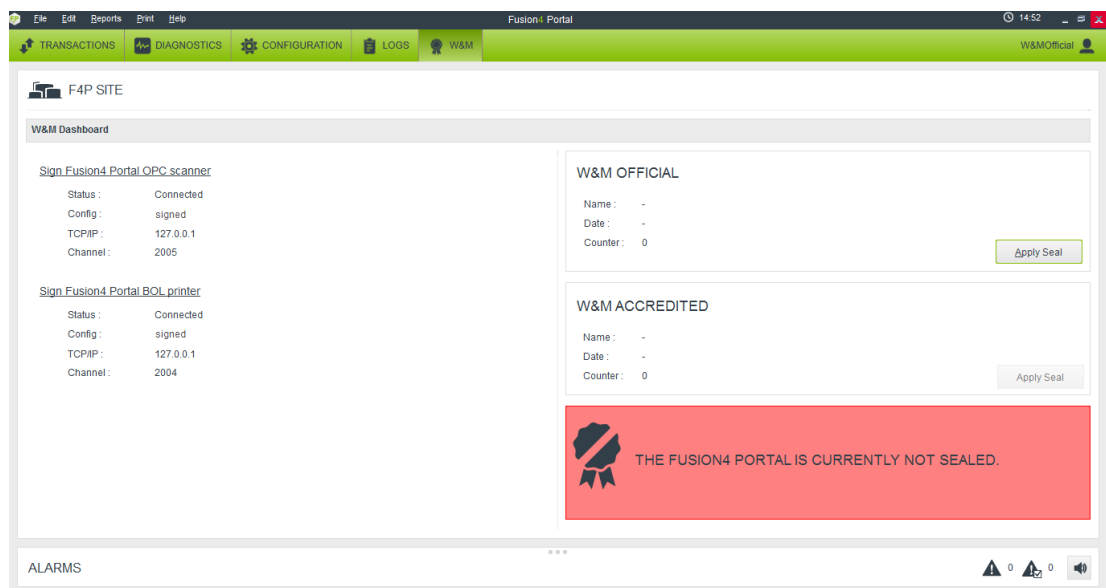
Perform the following steps to seal the application:

1. Log on to the PC as W&M Official or W&MAccredited.
2. From the Start menu select All Programs | Enraf | Fusion4 Portal. Fusion4 Portal is launched and the main window of Fusion4 Portal is displayed.



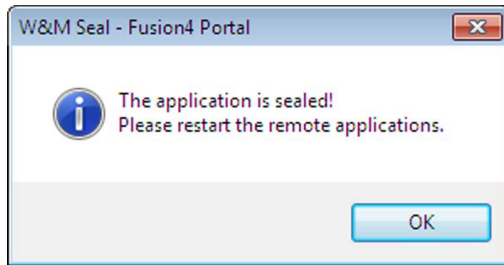
3. Click the W&M tab.

The W&M Dashboard is displayed.

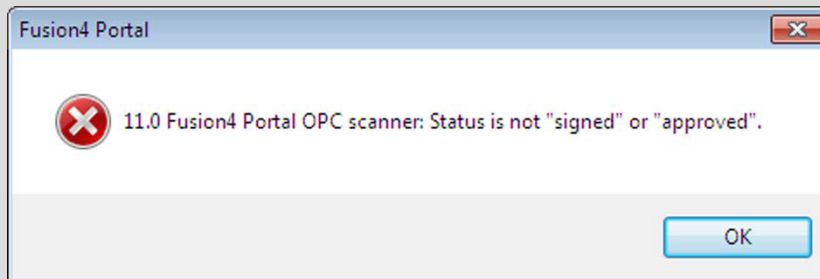


4. Check if the W&M relevant configuration data for both the Fusion4 Portal OPC scanner module and the Fusion4 Portal BoL printer module is signed.
5. Click the Apply Seal button.

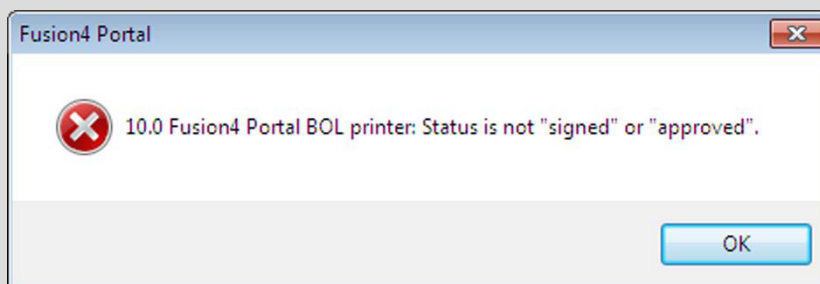
The following message is displayed:



NOTE: When the W&M relevant configuration data for the Fusion4 Portal OPC scanner module is not signed and you click the Apply Seal button, the following error message is displayed. You will have to sign the W&M relevant configuration data first, before you can seal the application.



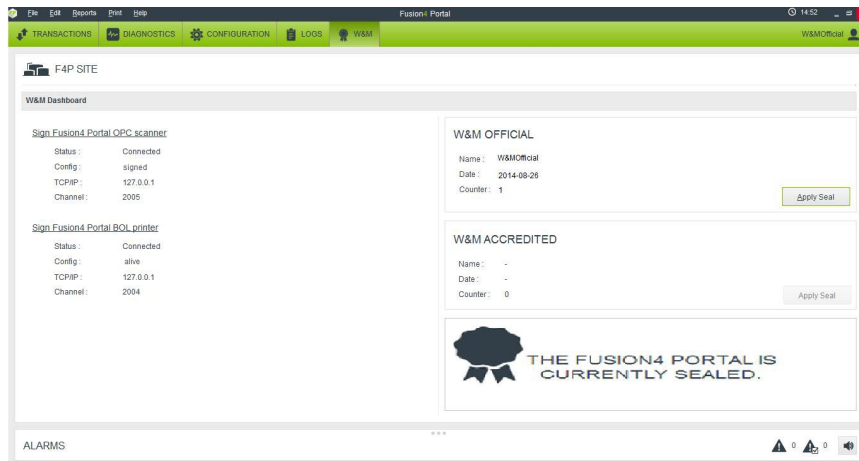
NOTE: When the W&M relevant configuration data for the Fusion4 Portal BoL printer module is not signed and you click the Apply Seal button, the following error message is displayed. You will have to sign the W&M relevant configuration data first, before you can seal the application.



6. Click the OK button to close the error message window.

To confirm the sealing of the application, the text “The Fusion4 Portal is currently sealed” is displayed. Furthermore:

- The user account name of the user that sealed the application is displayed.
- The date on which the application was sealed is displayed.
- The counter number is increased by “1”.
- The Config status of the W&M relevant configuration data of both the Fusion4 Portal OPC scanner module and the Fusion4 Portal BoL printer module is “approved”.



7. Shut down and restart the PC. After restart, the sealed W&M relevant configuration data will come into effect.

CAUTION: If in a sealed application the W&M relevant configuration data are changed (e.g. the properties of a COM port are changed) and subsequently this configuration data is sent, the seal will be broken. The application must be sealed to be W&M compliant again.

Notice

All procedures, data, information, drawings, specifications or other material, whether accompanying this document or separately supplied in furtherance of this document, contain confidential and proprietary information which (i) is the property of Guidant Measurement (Guidant) and its subsidiaries, (ii) is disclosed by Guidant only in confidence, and (iii) except as Guidant may otherwise permit in writing, is to be used, disclosed or copied only to the extent necessary for the evaluation and use thereof by the recipient.

The foregoing shall not apply to any such material to the extent that the contents (i) are now or subsequently become available to the public without payment, (ii) were previously known to the recipient, or (iii) subsequently become otherwise known to the recipient without restriction.

This document is based on information available at the time of its publication. While efforts have been made to be accurate, the information contained herein does not purport to cover all details or variations in hardware and software, nor to provide for every possible contingency in connection with installation, operation and maintenance.

Guidant makes no representation or warranty, either expressed or implied, with respect to, and assumes no responsibility for, the accuracy, completeness, or sufficiency of the information contained herein. No warranties of merchantability or fitness for a particular purpose shall apply.

The Guidant logo is a trademark.

This document takes precedence over and supercedes in their entirety all previous versions or revisions.

MN06307

© 2025 Guidant Corporation
All rights reserved.