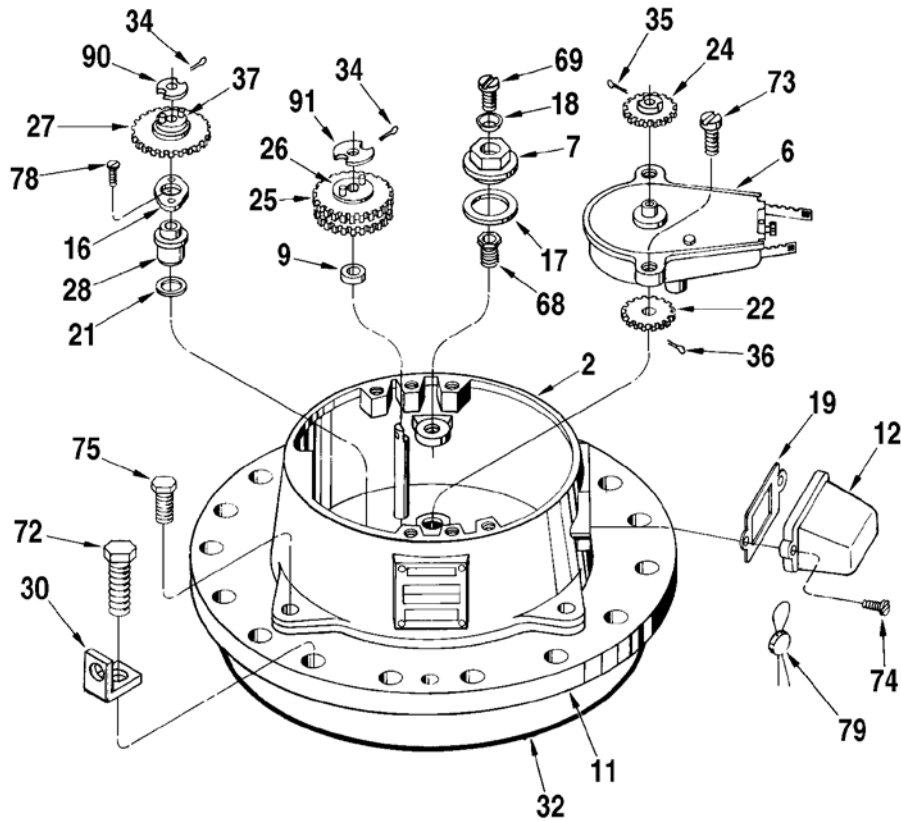


“G” Calibrator Version



Item	Description	Qty.	Part Number
1	Adapter, Calibrator Adjusting Stem	1	512372-001
2	Adapter, G Calibrator.....	1	014240-001
3	Arm, Locating:		
	Standard	1	533950-001
	Non-Ferrous.....	1	536807-001
4	Block:		
	Standard	1	003956-001
	Non-Ferrous.....	1	500792-001
	For 2,000 to 10,000 SSU	1	003956-003
5	Bushing, Jackshaft:		
	Standard	1	011680-001
	Non-Ferrous.....	1	504666-001
6	+@1 Calibrator:		
	Standard	1	512059-001
	Temperature Corrected	1	519734-001
	@2 Temperature Corrected, Special Temp. and API	1	533926-xxx
	Model G	1	501029-001
	Dummy Calibrator.....	1	516105-001
7	Cap, Adjusting Screw:		
	Standard	1	013667-001
	Non-Ferrous.....	1	013667-002
8	Clamp, Oil Tube	1	003905-001
9	Collar, Idler Shaft.....	1	011327-001
10	+ Coupling, Drive.....	1	072103-001
11	Cover:		
	Standard	1	519662-001
	Non-Ferrous.....	1	536833-001
	Non-Ferrous, G Calibrator	1	500800-002

Item	Description	Qty.	Part Number
12	Cover, G Calibrator.....	1	014171-001
13	Cover, Knob.....	1	003553-001
14	Dowel	1	001097-001
15	Flange, Inlet and Outlet:		
	Standard	2	013116-001
	Non-Ferrous.....	2	501034-001
16	Flange, Packing Gland	1	010171-001
17	+ Gasket, Adjusting Screw Cap:		
	Standard	1	060341-001
	Non-Ferrous.....	1	536871-001
18	+ Gasket, Adjusting Screw Cap Lock	1	013669-001
19	+ Gasket, G Calibrator Access Cover.....	1	014310-001
20	+ Gasket, Inlet and Outlet Flange.....	2	003959-001
21	Gasket, Packing Gland.....	1	010173-001
22	@3 Gear, Calibrator Drive:		
	U.S. Gallons	1	008970-001
	U.S. Gallons With G Calibrator.....	1	072253-001
	Imperial Gallons.....	1	070219-001
	Dekalitres.....	1	070685-001
	Dekalitres With G Calibrator	1	505282-001
23	Gear, Jackshaft:		
	Standard	1	072219-001
	Non-Ferrous.....	1	536832-001
	G Calibrator, Standard and Non-Ferrous.....	1	536876-001
24	Gear, Output Drive, G Calibrator	1	003491-001
25	@3 Gear, Double Pinion:		
	U.S. Gallons	1	505082-001
	U.S. Gallons With G Calibrator.....	1	072251-001
	Imperial Gallons.....	1	505083-001
	Dekalitres.....	1	505084-001
	Dekalitres With G Calibrator	1	505280-001
26	Pin	2	001126-001
27	@3 Gear, Single Pinion:		
	Standard and Non-Ferrous	1	505081-001
	G Calibrator	1	072252-001
28	+ Gland, Packing:		
	Buna-N.....	1	518630-001
	Viton.....	1	518630-002
	PTFE ¹	1	009535-001
	Brass/Viton	1	008934-001
	Non-Ferrous.....	1	535160-001
29	Housing:		
	Standard	1	533951-001
	Non-Ferrous.....	1	536834-001
30	Lug, Lifting.....	2	512002-002
31	Nut 1/2"-13	8	006399-002
32	O-Ring, Non-Ferrous Meters:		
	Buna	1	640888-060
	Viton.....	1	640894-436
33	Oiler.....	1	006588-001
34	Pin, Cotter:		
	Screw, 1/16 x 3/8"	2	009825-400
	Non-Ferrous, 1/16 x 5/8".....	2	641042-401
35	Pin, Groove, 1/16 x 5/8".....	1	006028-002
36	Pin, Groove, 5/64 x 1/2".....	1	006053-002

¹ Polytetrafluoroethylene (PTFE).

Item	Description	Qty.	Part Number
37	Pin, Locating Arm.....	1	503484-001
38	Plug, Drain, 1/2" NPT:		
	Standard.....	1	006505-002
	Non-Ferrous.....	1	060059-001
39	Ring, Retaining:		
	Standard.....	1	060391-001
	Non-Ferrous.....	1	640961-407
40	Rotor Assembly, Standard.....	1	534901-001
41	+ Bearing, Rotor.....	2	013664-001
42	+ Bearing, Thrust:		
	Standard.....	1	006042-001
	Non-Ferrous.....	1	009429-001
43	Blade, Lower:		
	Standard.....	1	071752-053
	Non-Ferrous.....	1	536825-001
	For T20R-3DI Meter.....	1	071752-011
	Alum., Modified for 2,000 to 10,000 SSU.....	1	071752-041
	Alum., Modified for 200F.....	1	071752-042
	Alum., Modified for 2,000 to 10,000 SSU and 200F.....	1	071752-043
	D.I., Modified for 2,000 to 10,000 SSU.....	1	009537-048
44	Pin, Cotter, 1/16 x 3/4".....	2	006132-001
45	Pin, Blade Roller.....	2	010666-001
46	Roller, Blade.....	2	014123-001
47	+ Blade, Upper:		
	Standard.....	1	071752-053
	Non-Ferrous.....	1	536824-001
	For T20R-3DI Meter.....	1	071753-011
	Alum., Modified for 2,000 to 10,000 SSU.....	1	071753-041
	Alum., Modified for 200F.....	1	071753-042
	Alum., Modified for 2,000 to 10,000 SSU and 200F.....	1	071753-043
	D.I., Modified for 2,000 to 10,000 SSU.....	1	009537-048
48	Pin, Cotter, 1/16 x 3/4".....	2	006132-001
49	Pin, Blade Roller.....	2	010666-001
50	Roller, Blade.....	2	014123-001
51	Block, Blade.....	4	010289-002
52	Clamp, Blade Block.....	4	010212-001
53	Plate, Rotor Gear:		
	Standard.....	1	009715-001
	Non-Ferrous.....	1	536836-001
54	Ring, Clamping:		
	Standard.....	1	013661-001
	Non-Ferrous.....	1	500794-001
55	Ring, Marcell.....	1	013665-001
56	Ring, Snap.....	1	640822-413
57	Rotor:		
	Standard.....	1	071756-001
	Non-Ferrous.....	1	536806-001
	Modified for 2,000 to 10,000 SSU.....	1	071756-002
58	Screw, #10-32 x 1/2":		
	Standard.....	6	015170-400
	Non-Ferrous.....	6	060058-001
59	Screw, Bearing Shield, #6-32 x 5/16":		
	Standard.....	3	006048-002
	Non-Ferrous.....	3	644154-401
60	Shaft and Cam Assembly:		
	Standard.....	1	533949-001
	Non-Ferrous.....	1	536837-001

Item		Description	Qty.	Part Number
61	+	Cam:		
		Standard	1	001340-001
		Non-Ferrous	1	500806-001
62		Key, Woodruff:		
		Standard	2	006041-002
		Non-Ferrous	2	641926-403
63		Shaft	1	533957-001
64		Shield, Lower Bearing:		
		Standard.....	1	013662-001
		Non-Ferrous	1	013662-002
65		Washer, Lower Bearing Shield:		
		Standard.....	3	642482-409
		Non-Ferrous	3	643442-403
66		Washer, Lock:		
		Standard.....	2	642482-406
		Non-Ferrous	2	643442-402
67		Screw, 3/8-16 x 7/8":		
		Standard	2	007558-400
		Non-Ferrous.....	2	643152-403
68		Screw, Adjusting.....	1	013668-001
69		Screw, Adjusting Screw Cap, 1/4-28 x 3/4"	1	645916-401
70		Screw, Adjusting Stem Assembly, #10-32 x 7/8"	2	640835-001
71		Screw, Block, #10-32 x 5/8"	8	065351-001
72		Screw, Cover, 3/8-16 x 1"	20	060248-002
73		Screw, G Calibrator, 1/4-20 x 1/2"	2	006775-002
74		Screw, G Calibrator, 1/4-20 x 1/2", Drilled	2	006775-003
75		Screw, G Calibrator, 5/16-18 x 5/8"	4	006217-003
76		Screw, Knob Cover, #10-32 x 3/4"	2	006481-003
77		Screw, Locating Arm, 5/16-18 x 1":		
		Standard	1	641230-403
		Non-Ferrous.....	1	643668-405
78		Screw, Packing Gland, #10-32 x 1/2"	2	006764-002
79	+	Seal, Lead and Wire	1	001627-400
80		Shaft, Idler Pinion	1	004036-001
81		Spring, Rotor	1	503311-002
82		Stem, Adjusting Assembly.....	1	009838-001
83	*	Ball, 1/8".....	2	006427-001
84	*	Plate, Base	1	003552-001
85	*	Plate, Retainer	1	003556-001
86	*	Spring, Knob.....	2	003557-001
87		Stem, Adjusting.....	1	003551-001
88		Stud:		
		Standard	8	642362-407
		Non-Ferrous.....	8	642362-405
89		Tube, Oil	1	514658-001
90		Washer, Drive	1	001125-001
91		Washer, Idler Shaft.....	1	003599-001

+ Recommended stock.

R Indicates change since last revision.

@1 Note 1: For component parts, see Form No. PO01028 for standard and temperature corrected calibrators, and Form No. PO01026 for dummy calibrator.

@2 Note 2: When ordering, include meter model number and gearing, temperature range, API or specific gravity, and API table used.

@3 Note 3: Standard gearing listed. For special options, see Gear Train Bulletin AB01023.

* Not illustrated.

Revisions included in PO01007 Issue/Rev. 0.0 (1/12):
Replaced publication P0566.04 which has been made obsolete. Total revision since last revision of P0566.04.

Editorial Change: 11/13: Packing Gland - item 28 reference changed to PTFE.

Headquarters:
500 North Sam Houston Parkway West,
Suite 100, Houston, TX 77067 USA
Phone: +1 (281) 260 2190
Fax: +1 (281) 260 2191

Operations:
Measurement Products and Equipment:
Ellerbek, Germany +49 (4101) 3040
Erie, PA USA +1 (814) 898 5000

Integrated Measurement Systems:
Corpus Christi, TX USA +1 (361) 289 3400
Kongsberg, Norway +47 (32) 286700

The specifications contained herein are subject to change without notice and any user of said specifications should verify from the manufacturer that the specifications are currently in effect. Otherwise, the manufacturer assumes no responsibility for the use of specifications which may have been changed and are no longer in effect.

Contact information is subject to change. For the most current contact information, visit our website at www.fmctechnologies.com/measurementsolutions and click on the "Contact Us" link in the left-hand column.

www.fmctechnologies.com/measurementsolutions