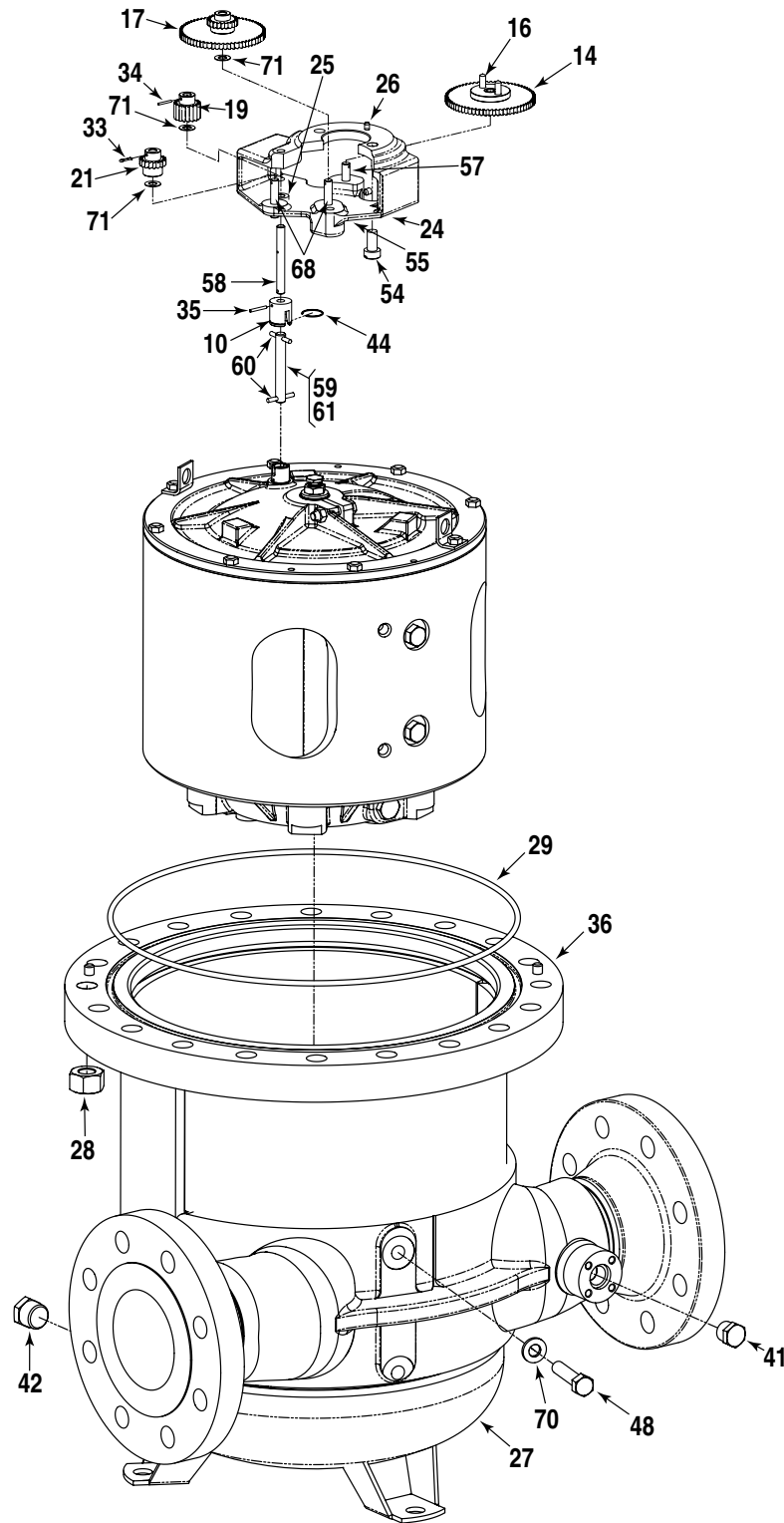
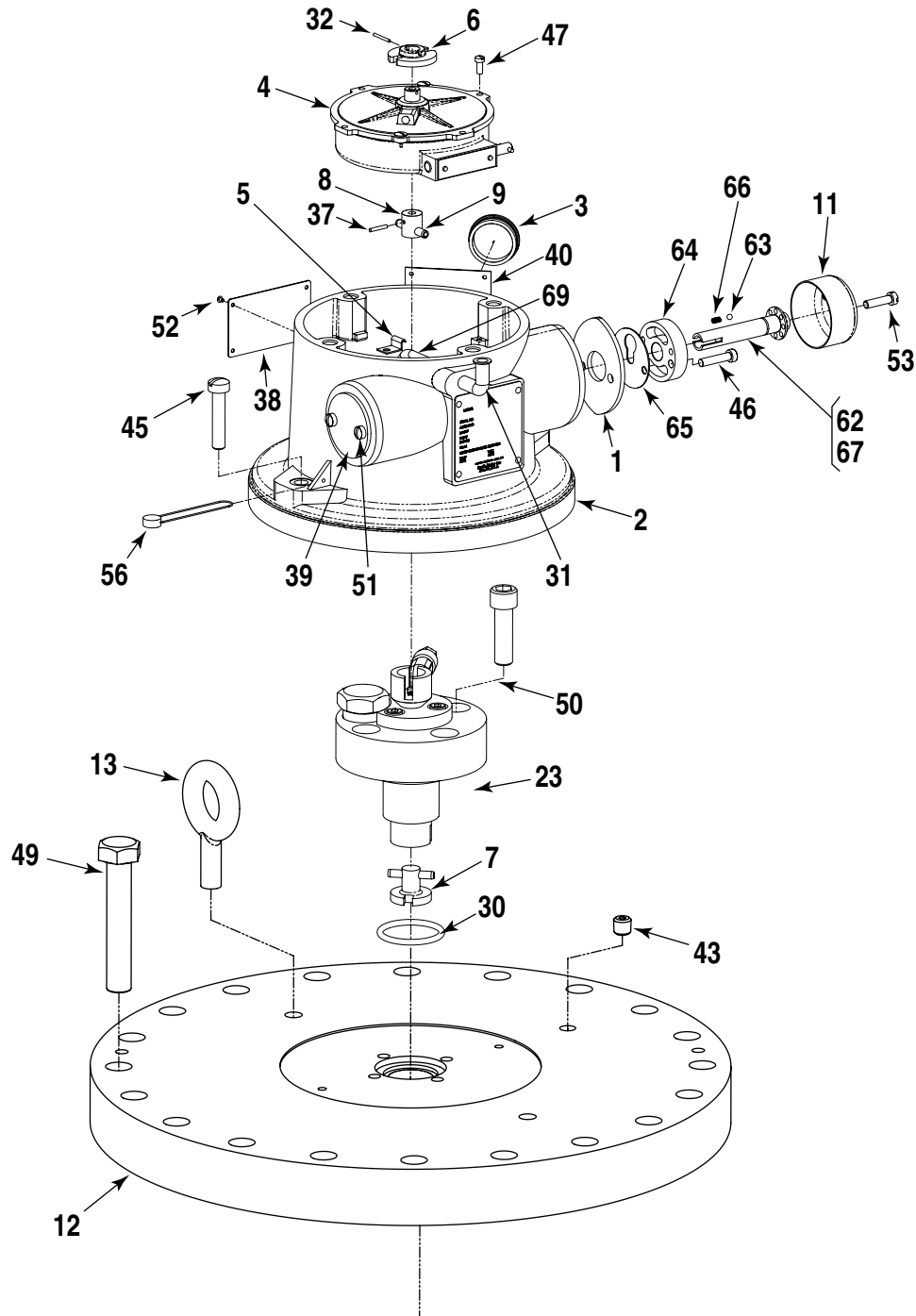


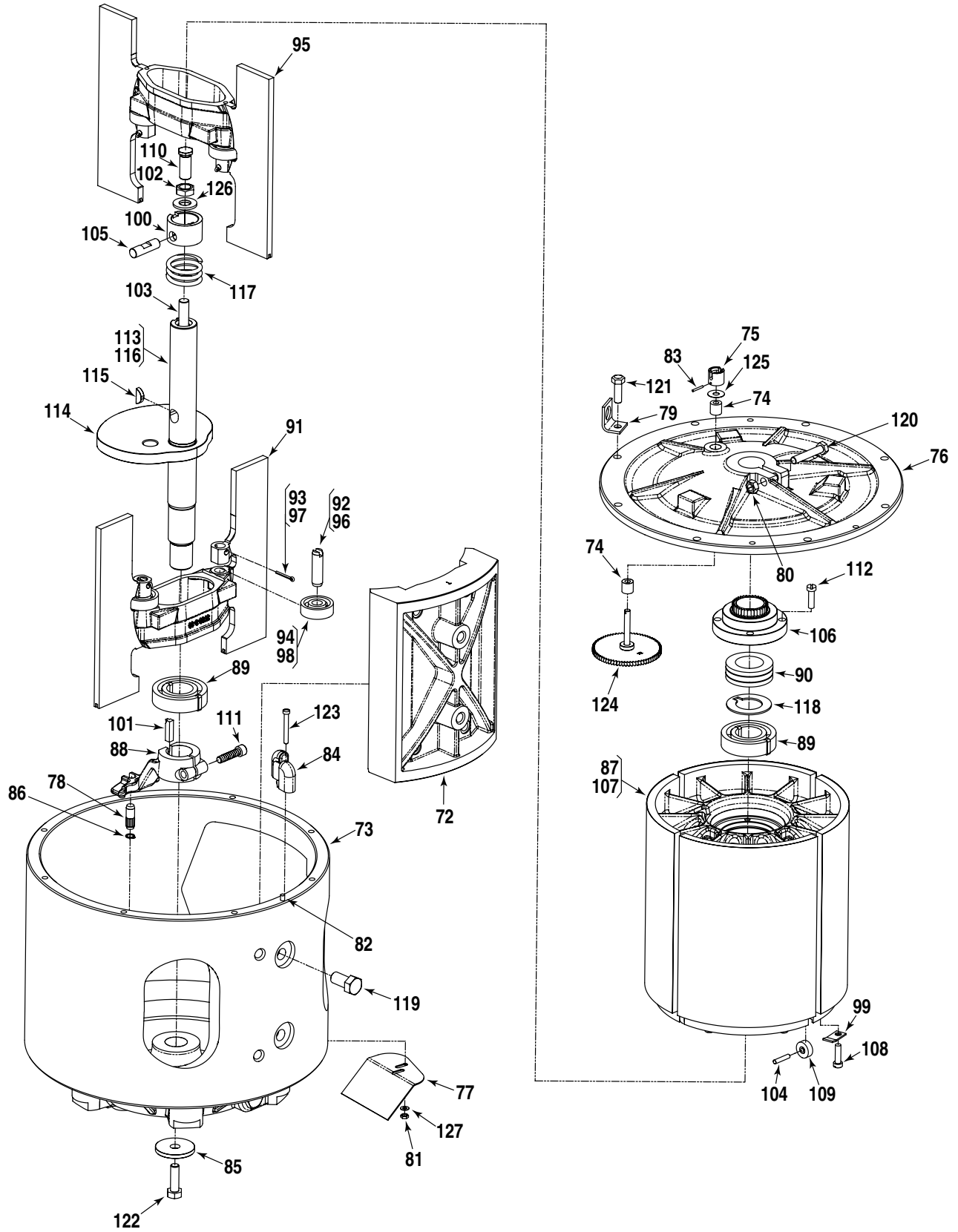
Smith Meter® PD Meter  
**Meter, PD Series,  
F4 – S6, S7**

Parts List Bulletin PO01012 || Issue/Rev 0.0 (7/13)





# Inner Mechanism



Item	Description	Qty.	Part Number
1	Adapter, Calibrator Adjusting Stem .....	1	512372-001
2	Adapter:		
	Standard and ATC .....	1	515755-001
	ATG .....	1	516608-001
3	Blank, Snap In .....	1	015533-401
4	+ Calibrator:		
	Standard .....	1	512059-001
	W/ ATC (Standard) .....	1	512060-001
@1	W/ ATC (Special Temp. or API) .....	1	516130-xxx
	Dummy Calibrator .....	1	516105-001
5	Clamp, Oil Tube .....	1	003905-001
6	+ Coupling, Drive .....	1	072103-001
7	Coupling, Drive:		
	S6 .....	1	518321-001
	S7 .....	1	518321-004
8	Coupling Input .....	1	005969-001
9	Pin, Pull, 3/16 x 1-1/8" .....	1	015640-404
10	Coupling Jackshaft .....	1	514633-001
11	Cover, Knob .....	1	003553-001
12	Cover, Outer Housing:		
	S6 .....	1	515834-001
	S7 .....	1	515833-001
13	Eyebolt .....	2	643877-401
14	@2 Gear, Calibrator Drive:		
	U.S. Barrels .....	1	514368-001
	U.S. Barrels, LPG .....	1	512239-001
	U.S. Gallons .....	1	008248-001
	U.S. Gallons, LPG .....	1	511858-001
	Imperial Gallons .....	1	514368-001
	Imperial Gallons, LPG .....	1	512239-001
	Dekalitres .....	1	515934-001
	Dekalitres, LPG .....	1	516373-001
15	* Bushing:		
	Standard and All Iron .....	1	013372-001
	LPG .....	1	504653-001
16	Pin .....	2	003325-002
17	@2 Gear, Intermediate Pinion:		
	U.S. Barrels .....	1	514366-001
	U.S. Barrels, LPG .....	1	515068-001
	U.S. Gallons .....	1	514770-001
	U.S. Gallons, LPG .....	1	515071-001
	Imperial Gallons .....	1	514769-001
	Imperial Gallons, LPG .....	1	515072-001
	Dekalitres .....	1	515932-001
	Dekalitres, LPG .....	1	516372-001
18	* Bushing, LPG only .....	1	504653-001
19	@2 Gear, Jackshaft Pinion:		
	U.S. Barrels .....	1	514363-001
	U.S. Barrels, LPG .....	1	515066-001
	U.S. Gallons .....	1	514767-001
	U.S. Gallons, LPG .....	1	515070-001
	Imperial Gallons .....	1	514767-001
	Imperial Gallons, LPG .....	1	515070-001
	Dekalitres .....	1	514767-001
	Dekalitres, LPG .....	1	515070-001
20	* Bushing, LPG only .....	1	504653-001

Item	Description	Qty.	Part Number
21	@2 Gear, Reversing Pinion: U.S. Barrels.....	1	514361-001
	U.S. Barrels, LPG .....	1	515067-001
22	* Bushing, LPG only .....	1	504653-001
23	+@3 Gland, Packing: Standard – Buna-N .....	1	515849-001
	PTFE <sup>1</sup> .....	1	515849-002
24	Housing, Gear: Standard and All Iron .....	1	514628-001
	LPG.....	1	514628-002
25	Bushing: Standard and All Iron.....	1	519882-001
	LPG .....	1	512796-001
26	Dowel .....	1	003628-001
27	Housing, Outer: S6.....	1	515835-001
	S7.....	1	515836-001
28	Nut, Hex: S6 (3/4" - 10).....	20	642138-411
	S7 (1" - 8).....	20	640261-001
29	+ O-Ring, Cover: S6, Buna-N .....	1	515864-001
	S7, Buna-N .....	1	515865-001
	S6, Viton.....	1	515864-002
	S7, Viton.....	1	515865-002
	S6, PTFE <sup>1</sup> .....	1	645842-410
30	+ O-Ring, Packing Gland: Buna-N.....	1	640888-001
	Viton.....	1	640894-001
	PTFE <sup>1</sup> .....	1	645905-403
31	Oiler.....	1	006588-001
32	Pin, Counter Drive Coupling.....	1	006028-002
33	Pin, Cotter (1/16 x 3/8").....	2	009825-400
34	Pin, Groove (1/16 x 1/2").....	1	006054-002
35	Pin, Groove (5/64 x 5/8").....	1	009593-400
36	Pin, Groove, Outer Cover: S6.....	2	641719-404
	S7.....	2	641719-406
37	Pin, Input Coupling.....	1	006053-002
38	Plate, Caution.....	1	006571-001
39	Plate, Cover.....	1	003440-001
40	Plate, Gland Lubrication.....	1	515873-001
41	Plug, Pipe: Standard .....	1	006505-002
	NACE .....	1	645242-402
42	Plug, Pipe: Standard .....	1	006878-002
	NACE .....	1	645242-403
43	Plug, Pipe.....	1	006393-002
44	Ring, Snap.....	1	512066-001
45	Screw, Adapter to cover (5/16 - 18 x 1 - 3/8", Drilled).....	2	642019-414
46	Screw, Base Plate, #10-32 x 7/8".....	2	640835-001
47	Screw, Calibrator, #6-32 x 5/16".....	2	006048-002
48	Screw, Cap – Inner Mechanism (1/2-13 x 2-1/4") .....	2	640580-001

<sup>1</sup> Polytetrafluoroethylene (PTFE).

Item	Description	Qty.	Part Number
49	Screw, Cap – Outer Housing:		
	S6 (3/4-10 x 4-1/4").....	20	641068-409
	S7 (1-8 x 6").....	20	642226-405
50	Screw, Cap – Packing Gland to Cover (5/16-18 x 1-1/4").....	4	006511-002
51	Screw, Cover Plate, #10-32 x 3/8".....	2	006045-002
52	Screw, Drive, #2 x 1/8".....	12	009880-400
53	Screw, Drilled, #10-24 x 3/4".....	2	006481-003
54	Screw, Gear Housing, 5/16-18 x 5/8".....	2	009813-400
55	Screw, Set-Gear Housing, #10-32 x 1/4".....	1	009469-400
56	+ Seal, Lead and Wire.....	3	001627-400
57	+ Shaft, Calibrator Drive Gear.....	1	515341-001
58	+ Shaft, Jack (Upper).....	1	514634-002
59	+ Shaft, Link Assembly.....	1	515866-001
60	Pin.....	2	640780-001
61	Shaft.....	1	512068-003
62	Stem, Adjusting Assembly.....	1	009838-001
63	Ball.....	2	006427-001
64	Plate, Base.....	1	003552-001
65	Plate, Retainer.....	1	003556-001
66	Spring, Knob.....	2	003557-001
67	Stem, Adjusting.....	1	003551-001
68	Stud, Gear Shaft.....	2	514370-001
69	Tube, Oil.....	1	514658-001
70	Washer, 1.0" x 0.51".....	2	533103-001
71	Washer, Jack Shaft.....	3	641985-402

### Inner Mechanism

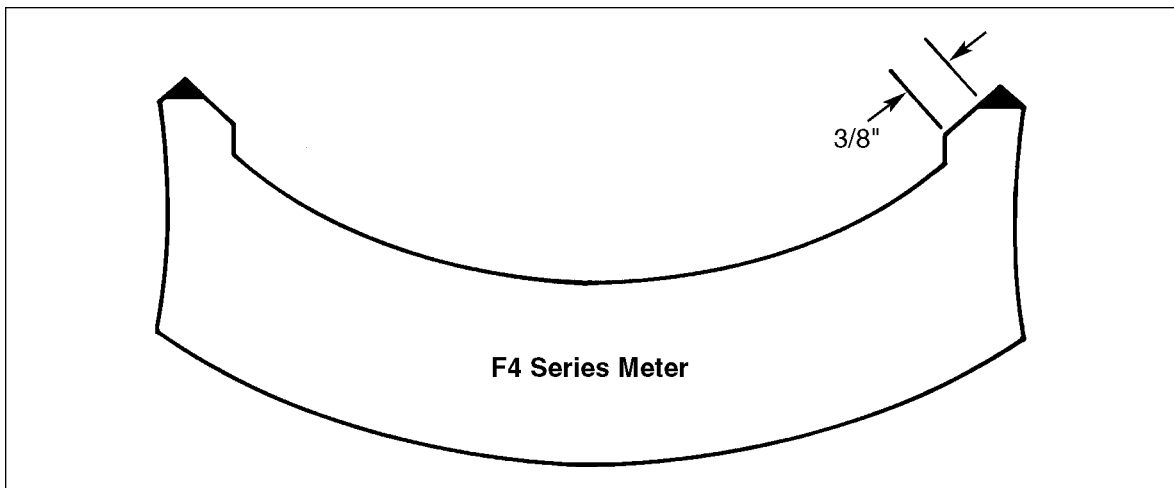
Item	Description	Qty.	Part Number
72	+@4 Block:		
	Standard.....	1	517085-001
	High Viscosity:		
	For 2,000 SSU to 10,000 SSU.....	1	517085-041
73	Body.....	1	511997-001
74	+ Bushing, Jack Shaft:		
	Standard and All Iron.....	2	519882-001
	LPG.....	2	512796-001
75	+ Coupling, Drive.....	1	512064-002
76	Cover, Inner:		
	Standard and All Iron.....	1	516456-001
	LPG.....	1	516456-002
77	Cover, Pitot, (Prior to 2010).....	1	512719-001
78	Dowel, Locating Arm.....	1	512115-001
79	Lug, Lift.....	2	512002-001
80	Nut, 5/16-18 Shakeproof.....	1	009552-400
81	Nut, Pitot Assembly, #10-32, (Prior to 2010).....	2	001723-400
82	Pin, Groove, 3/16 x 3/4".....	1	007900-400
83	Pin, Groove, 5/64 x 5/8".....	1	009593-400
84	Pitot.....	1	072186-001
85	Plate.....	1	512714-001
86	Ring, Retaining.....	1	064150-001
87	@3 Rotor and Blade Assembly:		
	Standard.....	1	517231-001
	All Iron.....	1	517231-002
	LPG.....	1	517231-003
88	Arm, Locating.....	1	511945-001

Item		Description	Qty.	Part Number
89	+	Bearing, Rotor:		
		Standard and All Iron.....	2	516109-001
		LPG .....	2	516109-002
90	+	Bearing, Thrust:		
		Standard and All Iron.....	1	006519-001
		LPG .....	1	504658-001
91	+	Blade, Lower:		
		Standard.....	1	008901-001
		All Iron .....	1	009441-042
		LPG .....	1	504662-001
		Standard – Modified for 2,000 SSU to 10,000 SSU .....	1	008901-041
		Standard – Modified for 200°F Max .....	1	008901-042
		Standard – Modified for 2,000 SSU to 10,000 SSU and 200°F ...	1	008901-043
		A.I. – Modified for 2,000 SSU to 10,000 SSU .....	1	009442-041
92		Pin, Blade Roller .....	2	003449-001
93		Pin, Cotter, 3/32 x 1" .....	2	006308-001
94	+	Roller, Blade:		
		Standard and All Iron .....	2	065109-001
		LPG .....	2	644412-402
95	+	Blade, Upper:		
		Standard.....	1	008900-001
		All Iron .....	1	009441-042
		LPG .....	1	504663-001
		Standard – Modified for 2,000 SSU to 10,000 SSU .....	1	008900-041
		Standard – Modified for 200°F Max .....	1	008900-042
		A.I. – Modified for 2,000 SSU to 10,000 SSU .....	1	009441-041
96		Pin, Blade Roller .....	2	003449-001
97		Pin, Cotter, 3/32 x 1" .....	2	006308-001
98		Roller, Blade:		
		Standard and All Iron .....	2	065109-001
		LPG .....	2	644412-402
99		Clamp, Rotor Cover Roller.....	8	011226-001
100		Clamp, Bearing .....	1	512074-001
101		Key .....	1	512715-001
102		Nut, Adjusting Screw.....	1	003527-001
103		Pin, Adjusting Screw Extension .....	1	512073-001
104		Pin, Rotor Cover Roller .....	4	001634-001
105		Pin, Thrust Bearing Collar.....	1	008251-001
106		Plate, Rotor Gear .....	1	512112-001
107		Rotor:		
		Standard.....	1	008253-002
		Previous Style .....	1	008253-191
		Standard – High Visc.....	1	008253-041
		LPG and Standard –High Temp .....	1	008253-042
		Standard – High Visc/High Temp .....	1	008253-041
108		Screw, 1/4-20 x 7/8" .....	8	006100-002
109	+	Roller, Rotor Cover:		
		Standard and All Iron.....	4	011681-001
		LPG .....	4	514751-001
110		Screw, Adjusting.....	1	003526-002
111		Screw, Locating Arm, 5/16-18 x 1-1/4".....	1	643764-402
112		Screw, Rotor Gear Plate, 1/4-20 x 7/8" .....	4	006100-002
113	+	Shaft and Cam Assembly.....	1	517152-001
114	+	Cam .....	1	517019-001
115		Key .....	1	005535-800
116		Shaft .....	1	511876-001

<b>Item</b>	<b>Description</b>	<b>Qty.</b>	<b>Part Number</b>
117	+ Spring, Rotor Bearing .....	1	002198-002
118	Spacer, Bearing .....	1	512075-001
119	Screw, Cap (Block) 1/2 - 13 x 1 - 3/4" .....	2	010525-400
120	Screw, Cover, 5/16-18 x 1" .....	1	006325-002
121	Screw, Inner Cover to Body.....	8	006140-002
122	Screw, Nylok.....	1	641044-401
123	Screw, Pitot:		
	Previous Style (Prior to 2010) #10-32 x 1 1/2" .....	2	009606-400
	Current Style #10-32 x 3/8" .....	2	006045-002
124	Shaft, Jack and Gear Assembly .....	1	512062-001
125	Washer-Flat, .75 OD, .265 ID, .010 Thick .....	1	643249-401
126	Washer-Flat, 1/2" .....	1	065309-002
127	Washer, Lock #10, (Prior to 2010).....	2	642482-406



- + Recommended spares.
- \* Not illustrated.
- R Indicates change since last revision.
- @1 Note 1: When ordering, include temperature range and specific API gravity.
- @2 Note 2: Only Standard gearing is listed. For additional gearing combinations, see Gear Train Bulletin AB01023.
- @3 Note 3: See Form No. PO01042 for components.
- @4 Note 4: In 1973 a change in design was made to the block and cam of the four-inch meter. To ensure proper operation, a current style block must be used with a current style cam. Either current or previous style block can be used with previous style cam. The shaded area of the block outline below represents the dimensioning of the previous style.



F4, S6-S7 parts list P0546.40X has been made OSOLETE and has been replaced with PO01012 - July 2013. Total revision since last revision of P0546.40.

**Editorial Change:** 11/13: Items 23, 29, 30 - material reference changed to PTFE.

**Headquarters:**  
500 North Sam Houston Parkway West,  
Suite 100, Houston, TX 77067 USA  
Phone: +1 (281) 260 2190  
Fax: +1 (281) 260 2191

**Operations:**  
**Measurement Products and Equipment:**  
Ellerbek, Germany +49 (4101) 3040  
Erie, PA USA +1 (814) 898 5000

**Integrated Measurement Systems:**  
Corpus Christi, TX USA +1 (361) 289 3400  
Kongsberg, Norway +47 (32) 286700

The specifications contained herein are subject to change without notice and any user of said specifications should verify from the manufacturer that the specifications are currently in effect. Otherwise, the manufacturer assumes no responsibility for the use of specifications which may have been changed and are no longer in effect.

Contact information is subject to change. For the most current contact information, visit our website at [www.fmctechnologies.com/measurementsolutions](http://www.fmctechnologies.com/measurementsolutions) and click on the "Contact Us" link in the left-hand column.

**[www.fmctechnologies.com/measurementsolutions](http://www.fmctechnologies.com/measurementsolutions)**