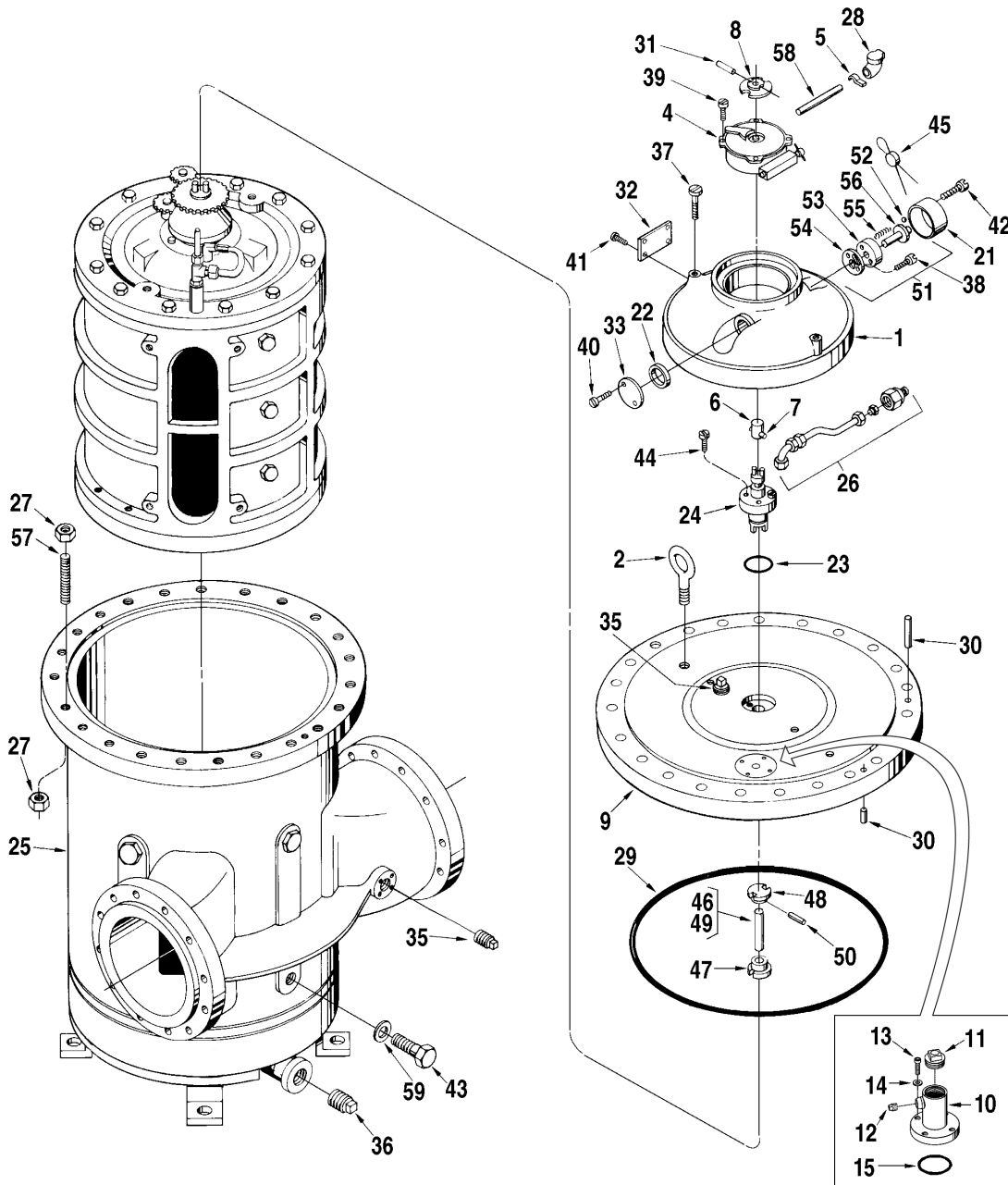
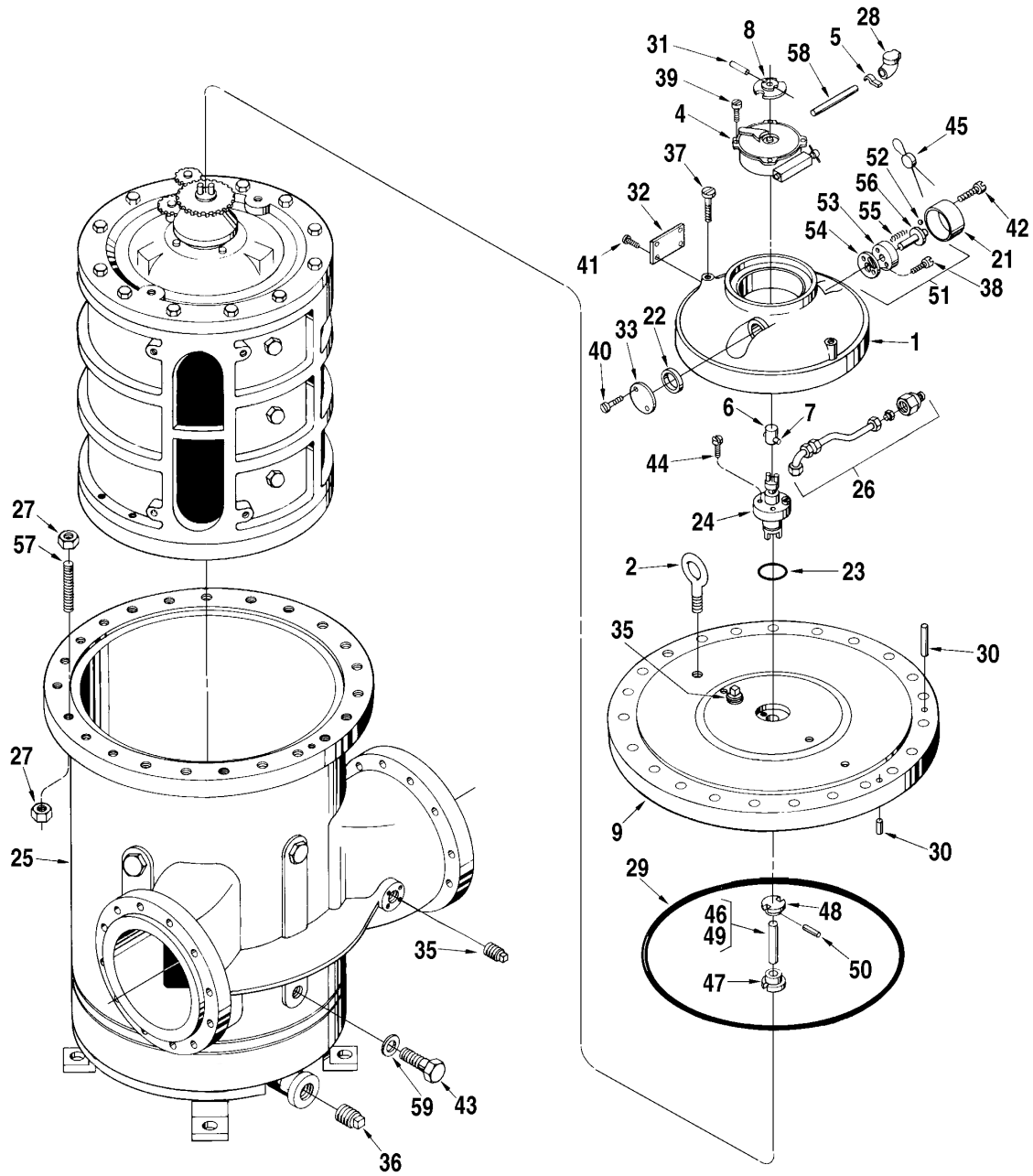


Model JB10-S1, S3, and S5

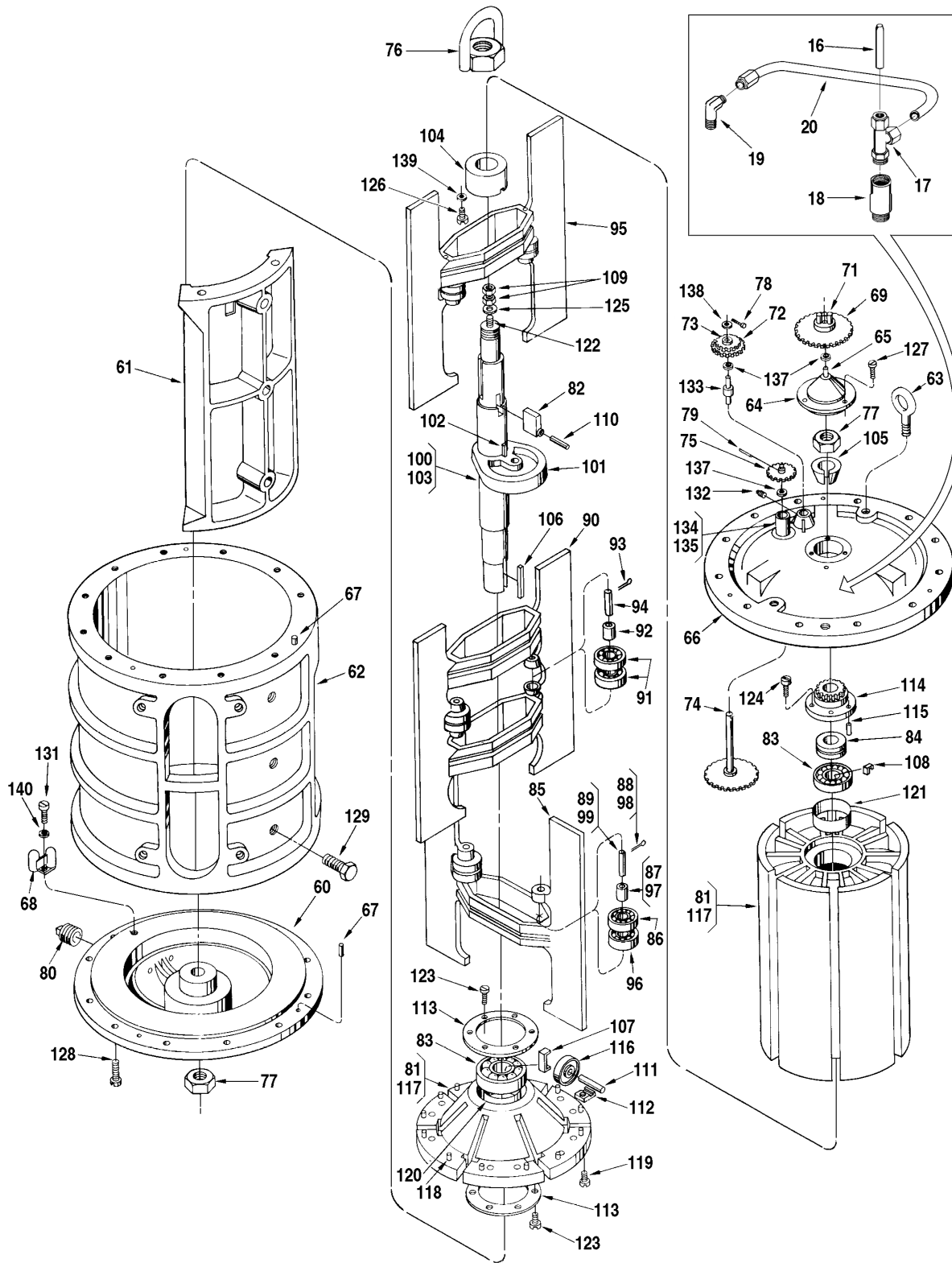
Bulletin PO01019 Issue/Rev. 0.4 (1/24)



Pre 2003



Inner Mechanism 2003 to Current



Item	Note	Description	Quantity	JB10-S1 Pre 1998	JB10-S3, S5 Pre 1998	JB10-S3, S5 1998-2003 Without Vent Kit	JB10-S3, S5 2003-Present With Vent Kit
1		Adapter:					
		Standard and ATC	1	518350-001	518350-002	518350-002	518350-002
		ATG	1	506123-002	506123-003	506123-003	506123-003
2		Bolt, Eye	2	643877-401	065433-005	065433-005	655425-408
3	1	Washer	2	N/A	N/A	N/A	646638-404
4	2	Calibrator:					
		Manual	1	512059-001	512059-001	512059-001	512059-001
		With ATC (Standard)	1	512060-001	512060-001	512060-001	512060-001
	4	With ATC (Special Drilled)	1	516130-xxx	516130-xxx	516130-xxx	516130-xxx
		Dummy Calibrator	1	516105-001	516105-001	516105-001	516105-001
5		Clamp, Oil Tube	1	003905-001	003905-001	003905-001	003905-001
6		Coupling, Assembly:					
		Standard, used on 3/16" Shaft	1	005969-001	005969-001	005969-001	005969-001
		Used on Xmitters with 1/4" Shaft	1	005969-002	005969-002	005969-002	005969-002
7		Pin	1	003540-001	003540-001	003540-001	003540-001
8		Coupling, Drive	1	072103-001	072103-001	072103-001	072103-001
9		Cover	1	500283-001	504044-001	554268-001	554268-003
		Vent:					
10		Vent Housing:	1	N/A	N/A	N/A	554606-003
11		Pipe Plug, 2" NPT	1	N/A	N/A	N/A	645350-401
12		Pipe Plug, 1/2" NPT	1	N/A	N/A	N/A	645242-402
13		Screw	4	N/A	N/A	N/A	646205-402
14		Washer	4	N/A	N/A	N/A	065309-002
15		O-Ring	1	N/A	N/A	N/A	646612-401
16		Spacer	1	N/A	N/A	N/A	554059-003
17		Fitting	1	N/A	N/A	N/A	646200-401
18		Adapter	1	N/A	N/A	N/A	554336-001
19		Elbow	1	N/A	N/A	N/A	643386-405
20		Tubing - 316SS, 3/8" OD x 0.035" wall	1	N/A	N/A	N/A	N/A
21		Cover, Knob	1	003553-001	003553-001	003553-001	003553-001
22		Gasket, Cover Plate	1	003834-001	003834-001	003834-001	003834-001
23	2	Gasket, Packing Gland	1	011337-001	011337-001	011337-001	011337-001
24	2, 5	Gland, Packing:					
		Buna-N	1	500351-001	009652-001	009652-001	009652-001
		PTFE	1	500351-002	009652-002	009652-002	009652-002
25		Housing, Outer:					
		S1	1	C/F	N/A	N/A	N/A
		S3	1	N/A	C/F	554265-001	554265-001
		S5	1	N/A	C/F	554279-001	554279-001
26		Lubrication Assembly	1	N/A	503554-001	503554-001	503554-001
27		Nut, Hex Heavy, Meter Cover	48	006258-400	006385-400	646057-402	646057-402
28		Oiler	1	006588-001	006588-001	006588-001	006588-001
29	2	O-Ring, Cover:					
		Buna-N	1	511874-001	504001-001	504001-001	504001-001
		FKM	1	511874-002	504001-002	504001-002	504001-002
30		Pin, Locating Dowel	2	003348-001	003348-001	003348-001	003348-001
31		Pin, Groove, 5/64 x 1/2"	1	006053-002	006053-002	006053-002	006053-002
32		Plate, Caution	1	006571-001	006571-001	006571-001	006571-001

Item	Note	Description	Quantity	JB10-S1 Pre 1998	JB10-S3, S5 Pre 1998	JB10-S3, S5 1998-2003 Without Vent Kit	JB10-S3, S5 2003-Present With Vent Kit
33		Plate, Cover	1	003440-001	003440-001	003440-001	003440-001
34	2	Plate, Lubrication	1	N/A	517715-002	517715-002	517715-002
35		Plug, Pipe, 1/2" NPT:					
		Standard	2	006505-002	006505-002	006505-002	006505-002
		NACE	2	N/A	645242-402	645242-402	645242-402
36		Plug, Pipe, 2" NPT:					
		Standard	1	006759-002	006759-002	006759-002	006759-002
		NACE, S3 Only	1	N/A	645242-408	645242-408	645242-408
37		Screw, Adapter Cover	2	642043-432	642043-432	642043-432	642043-432
38		Screw, Base Plate, #10-32 x 7/8"	2	640835-001	640835-001	640835-001	640835-001
39		Screw, Calibrator Mount #6-32 x 5/16"	2	006048-002	006048-002	006048-002	006048-002
40		Screw, Cover Plate, #10-32 x 3/8"	2	006045-002	006045-002	006045-002	006045-002
41		Screw, Drive, Caution Plate	8	009880-400	009880-400	009880-400	009880-400
42		Screw, Knob Cover, #10-24 x 3/4"	2	006481-003	006481-003	006481-003	006481-003
43		Screw, Nozzle to Innermech:					
		5/8-11 x 3-1/2"	4	P8000017724	P8000017724	P8000017724	P8000017724
		NACE	4	N/A	P8000017724	P8000017724	P8000017724
44		Screw, Packing Gland:					
		5/16-18 x 1-1/4"	3	006511-002	006511-002	006511-002	006511-002
45	2	Seal, Lead and Wire	2	001627-400	001627-400	001627-400	001627-400
46		Shaft Assembly, Calibrator	1	N/A	501972-001	501972-001	501972-001
47		Coupling, Lower Drive	1	N/A	503408-001	503408-001	503408-001
48		Coupling, Upper Drive	1	N/A	501970-001	501970-001	501970-001
49		Shaft	1	N/A	501971-001	501971-001	501971-001
50		Pin, Groove, 5/64 x 1/2"	2	N/A	006053-002	006053-002	006053-002
51		Stem Assembly, Adjusting	1	009838-001	009838-001	009838-001	009838-001
52		Ball	2	006427-001	006427-001	006427-001	006427-001
53		Plate, Base	1	003552-001	003552-001	003552-001	003552-001
54		Plate, Retainer	1	003556-001	003556-001	003556-001	003556-001
55		Spring, Knob	2	003557-001	003557-001	003557-001	003557-001
56		Stem, Adjusting	1	003551-001	003551-001	003551-001	003551-001
57		Stud, Meter Cover	24	065357-001	640446-001	655422-401	655422-401
58		Tube, Oil	1	514658-001	514658-001	514658-001	514658-001
59		Washer, Cinch Bolt	4	514584-001	514584-001	514584-001	514584-001

Inner Mechanism

Item	Note	Description	Quantity	Part Number
60		Base	1	500186-002
61		Block:		
		Standard (up to 1,000 SSU)	1	536590-001
		High Viscosity 1 for 1,000 SSU to 3,000 SSU	1	536590-201
		High Viscosity 2 for 3,000 SSU to 5,000 SSU	1	536590-202
		High Viscosity 3 for 5,000 SSU to 10,000 SSU	1	536590-203
62		Body	1	515174-001
63		Bolt, Eye	2	643877-401
64		Cap, Adjusting Screw	1	536276-001
65		Shaft, Drive Gear	1	003569-001

Item	Note	Description	Quantity	Part Number
66		Cover:		
		With Vent	1	536277-004
		Without Vent	1	536277-001
67		Dowel, Cover and Base	2	501205-001
68		Fitting, Pitot	1	072186-001
69	6	Gear, Calibrator Drive:		
		Barrels, Standard and All Iron	1	504194-001
		Barrels, LPG	1	536529-001
		Hectoliters, Standard and All Iron	1	515304-00
		Hectoliters, LPG	1	536533-001
70	1	Bushing:		
		Standard and All Iron	1	065311-001
		LPG	1	512797-001
71		Pin	2	500418-001
72	6	Gear, Idler:		
		Barrels, Standard and All Iron	1	516304-001
		Barrels, LPG	1	536528-001
		Hectoliters, Standard and All Iron	1	515302-001
		Hectoliters, LPG	1	536532-001
73		Bushing, LPG	1	512797-001
74		Gear, Jackshaft	1	500225-001
75	6	Gear, Jackshaft Pinion:		
		Barrels and Hectoliters	1	500704-001
		Imperial Gallons	1	512249-001
76		Lug, Lifting, Rotor Assembly	1	552125-001
77		Nut, Rotor Shaft, 1-1/2"-12	2	641997-402
78		Pin, Cotter, 1/16 x 1/2"	1	001095-401
79		Pin, Groove, 3/32 x 1/2"	1	006136-002
80		Plug, Pipe, 1/2" NPT	1	006505-002
81		Rotor and Blade Assembly:		
		Standard	1	537691-001
		All Iron	1	536279-002
		LPG	1	537691-003
82		Bar, Adjusting	1	536440-001
83	2	Bearing, Rotor:		
		Standard and All Iron	2	513168-001
		LPG	2	513168-002
84	2	Bearing, Thrust:		
		Standard and All Iron	1	643999-401
		LPG	1	644010-401
85	2	Blade Assembly, Lower		
		Standard (up to 1,000 SSU) and LPG	1	536266-001
		All Iron (up to 1,000 SSU)	1	537714-001
		Standard; modified for 1,000 SSU to 3,000 SSU	1	536266-101
		Standard; modified for 3,000 SSU to 5,000 SSU	1	536266-102
		Standard; modified for 5,000 SSU to 10,000 SSU	1	536266-103
		Standard; modified for 200 °F Maximum	1	536266-104

Item	Note	Description	Quantity	Part Number
		Standard; modified for 1,000 SSU to 3,000 SSU and 200 °F	1	536266-105
		Standard; modified for 3,000 SSU to 5,000 SSU and 200 °F	1	536266-106
		Standard; modified for 5,000 SSU to 10,000 SSU and 200 °F	1	536266-107
		A.I.; modified for 5,000 SSU to 10,000 SSU	1	537714-103
86	2	Bearing, Blade:		
		Nylon Retainer	4	644412-405
87		Bushing, Blade	2	512353-001
88		Pin, Cotter, 3/32 x 1-1/4"	2	006373-001
89		Shaft, Blade Bearing	2	551361-001
90	2	Blade Assembly, Middle:		
		Standard (up to 1,000 SSU) and LPG	1	536263-001
		All Iron (up to 1,000 SSU)	1	536587-001
		Standard; modified for 1,000 SSU to 3,000 SSU	1	536263-101
		Standard; modified for 3,000 SSU to 5,000 SSU	1	536263-102
		Standard; modified for 5,000 SSU to 10,000 SSU	1	536263-103
		Standard; modified for 200 °F Max	1	536263-104
		Standard; modified for 1,000 SSU to 3,000 SSU and 200 °F	1	536263-105
		Standard; modified for 3,000 SSU to 5,000 SSU and 200 °F	1	536263-106
		Standard; modified for 5,000 SSU to 10,000 SSU and 200 °F	1	536263-107
		A.I.; modified for 5,000 SSU to 110,000 SSU	1	536587-103
91	2	Bearing, Blade:		
		Nylon Retainer	4	644412-40
92		Bushing, Blade	2	512353-001
93		Pin, Cotter, 3/32 x 1-1/4"	4	006373-001
94		Shaft, Blade Bearing	2	551361-001
95	2	Blade Assembly, Upper:		
		Standard (up to 1,000 SSU) and LPG	1	536265-001
		All Iron (up to 1,000 SSU)	1	537713-001
		Standard; modified for 1,000 SSU to 3,000 SSU	1	536265-101
		Standard; modified for 3,000 SSU to 5,000 SSU	1	536265-102
		Standard; modified for 5,000 SSU to 10,000 SSU	1	536265-103
		Standard; modified for 200 °F Maximum	1	536265-104
		Standard; modified for 1,000 SSU to 3,000 SSU and 200 °F	1	536265-105
		Standard; modified for 3,000 SSU to 5,000 SSU and 200 °F	1	536265-106
		Standard; modified for 5,000 SSU to 10,000 SSU and 200 °F	1	536265-107
		A.I.; modified for 5,000 SSU to 10,000 SSU	1	537713-103
96	2	Bearing, Blade:		
		Nylon Retainer	4	644412-405

Item	Note	Description	Quantity	Part Number
97		Bushing, Blade	2	512353-00
98		Pin, Cotter, 3/32 x 1-1/4"	2	006373-001
99		Shaft, Blade Bearing	2	551361-001
100	2	Cam and Shaft Assembly	1	536254-001
101		Cam	1	536251-001
102		Key	1	536255-001
103		Shaft	1	536253-001
104		Collar	1	536269-001
105		Cone, Shaft	1	536273-001
106		Key	1	500192-001
107		Lock, Rotor Bearing, Lower	1	536403-001
108		Lock, Rotor Bearing, Upper	1	537069-001
109		Nut, Adjusting Screw, 1/2"-20 UNF-2B	2	640671-001
110		Pin, Roll, 5/32 x 1"	1	010527-400
111		Pin, Rotor Cover Roller	6	500197-001
112		Plate, Rotor Cover Roller Pin	12	536272-001
113		Plate, Lock Assembly	2	512965-001
114		Plate, Rotor Gear	1	536268-001
115		Pin, Dowel	1	000004-001
116	2	Roller, Rotor Cover	6	500196-001
117		Rotor, Sub Assembly:	1	
		Standard (up to 1,000 SSU)	1	536259-001
		Standard; modified for 1,000 SSU to 3,000 SSU	1	536259-101
		Standard; modified for 3,000 SSU to 5,000 SSU	1	536259-102
		Standard; modified for 5,000 SSU to 10,000 SSU	1	536259-103
118		Dowel	9	500415-001
119		Screw, Cap, 3/8"-16 UNC-2A, Drilled	8	642048-419
120	7	Sleeve, Lower:		
		1993 to present (not sold as a separate component; included with item number 117)	1	N/A
		Prior to 1993	1	536258-002
121	7	Sleeve, Upper:		
		1993 to present (not sold as a separate component; included with item number 117)	1	N/A
		Prior to 1993	1	536258-001
122		Screw, Adjusting	1	536274-001
123		Screw, Cap, 1/4-20 x 1/2"	12	006775-002
124		Screw, Cap, 3/8-16 x 1-1/4"	6	640367-001
125		Washer, Flat	1	646636-401
126		Screw, #10-32 x 3/8" Nylock	2	643339-401
127		Screw, Adjusting Screw Cap, 5/16-18 x 1-1/4"	4	006151-002
128		Screw, Body, 5/8-11 x 1-3/4"	24	006156-002
129		Screw, Cap, Body and Block, 1/2-13 x 2	3	646134-401
130	1	Screw, Drive, Caution Tag	2	006220-002
131		Screw, Pitot, #10-32 x 1/2"	2	006110-002
132		Screw, Set, 1/4-20 x 1/4"	1	006538-001

Item	Note	Description	Quantity	Part Number
133		Shaft, Idler Gear	1	500233-001
134		Sleeve, Assembly:		
		Standard and All Iron	1	500412-001
		LPG	1	512791-001
135		Bushing:		
		Standard and All Iron	2	519882-002
		LPG	2	512796-001
136	1	Tag, Caution	1	006572-001
137		Washer	3	014012-200
138		Washer:		
		Standard and All Iron	1	009615-400
		LPG	1	060554-001
139		Washer, Flat	2	006929-001
140		Washer, Lock	3	642482-406

Inner Mechanism General Assembly Part Numbers

Description	Part Number
Barrel Geared, Standard	536279-091
Barrel Geared, All Iron Trim	536279-092
Barrel Geared, LPG Trim	536279-093
Hectoliter Geared, Standard	536279-291
Hectoliter Geared, All Iron Trim	536279-292
Hectoliter Geared, LPG Trim	536279-293

Notes

Note	Description
1	Not illustrated
2	Recommended stock
3	Indicates change since last revision
4	When ordering, include meter model and gearing, temperature and API gravity, and table
5	See Packing Glands Parts List (PO01042) for component parts
6	Only standard gearing is listed; for additional gearing combinations, see PD Meters Gear Train application bulletin (AB01023)
7	Apply a small amount of Loctite (part number 645001-401) to sleeve before installing in rotor

The specifications contained herein are subject to change without notice and any user of said specifications should verify from the manufacture that the specifications are currently in effect. Otherwise, the manufacturer assumes no responsibility for the use of specifications which may have been changed and are no longer in effect.

USA Operations
1602 Wagner Avenue
Erie, PA 16510 USA
+1 814.898.5000

TechnipFMC Corporate Headquarters
13460 Lockwood Road
Building S01
Houston, TX 77044 USA
+1 281.591.4000

Germany Operations
Smith Meter GmbH
Regentstrasse 1
25474 Ellerbek, Germany
+49 4101 304.0

TechnipFMC.com

Copyright © 2023 TechnipFMC plc. All rights reserved.