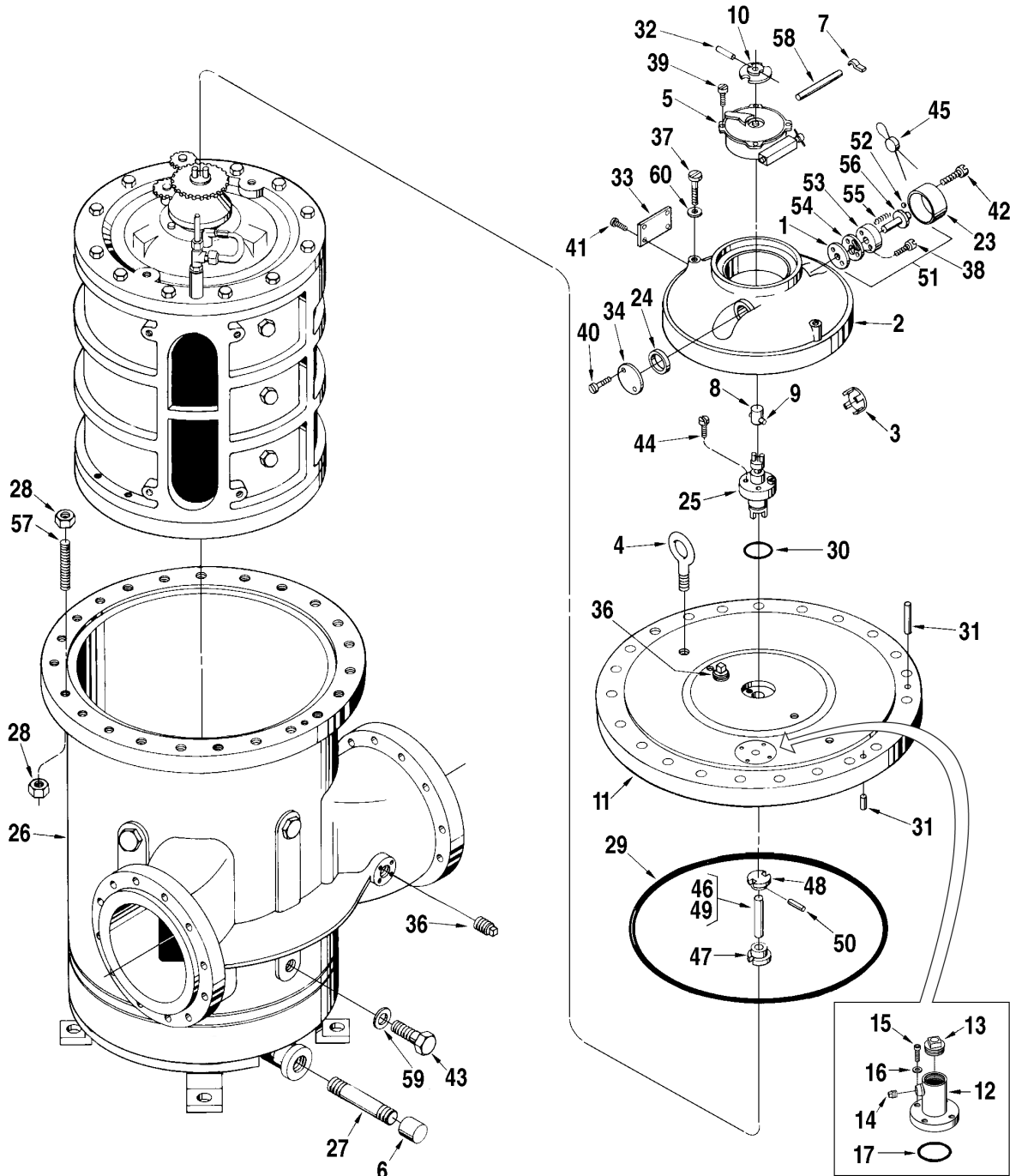
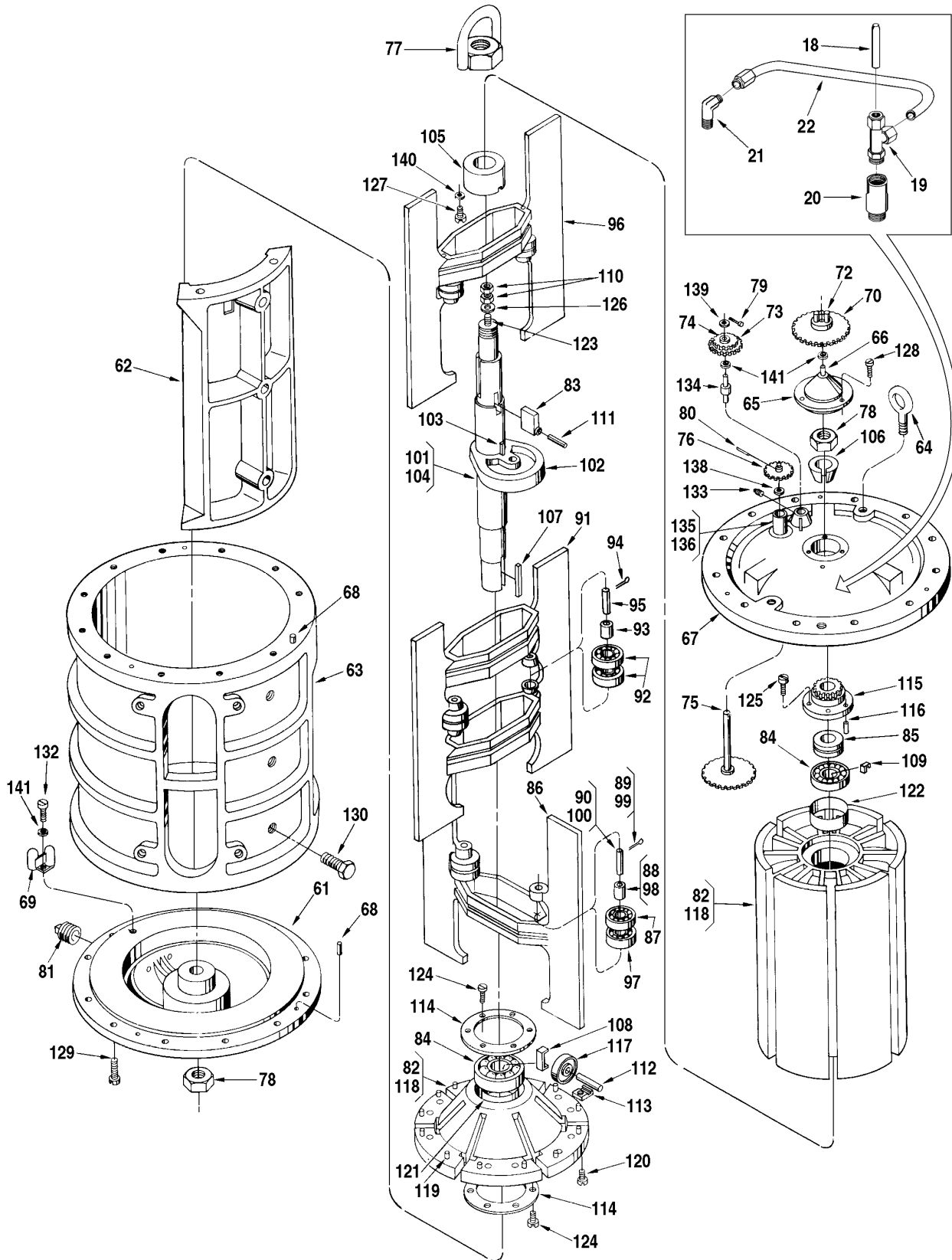


Model JB10-S6 and S7

Bulletin PO01020 Issue/Rev. 0.5 (2/24)



Inner Mechanism



Item	Note	Description	Quantity	Part Number
1		Adapter, Calibrator Adjusting	1	512372-001
2		Adapter:		
		Standard and ATC	1	515755-001
		ATG	1	516608-001
3		Blank, Snap In	1	015533-401
4		Bolt, Eye:		
		Pre 2004	2	065433-005
		2004 - Current	2	655425-402
5	2	Calibrator:		
		Manual	1	512059-001
		With ATC (Standard)	1	512060-001
	4	With ATC (Special Temperature or API)	1	516130
		Dummy Calibrator	1	516105-001
6		Cap, Pipe	1	640259-002
7		Clamp, Oil Tube	1	003905-001
8		Coupling Assembly:		
		Standard, Used on 3/16" Shaft	1	005969-001
		used on Xmitters with 1/4" Shaft	1	005969-002
9		Pin	1	003540-001
10		Coupling, Drive	1	072103-001
11		Cover:		
		With Vent Kit:		
		S6	1	517560-001
		S7	1	517561-001
		Without Vent Kit (Pre 2004):		
		S6	1	517560-002
		S7	1	517561-002
		Vent:		
12		Vent Housing	1	554606-003
13		Pipe Plug, 2" NPT	1	645350-401
14		Pipe Plug, 1/2" NPT	1	645242-402
15		Screw	4	646205-402
16		Washer	4	065309-002
17		O-Ring	1	646612-401
18		Spacer	1	554059-004
19		Fitting	1	646200-401
20		Adapter	1	554336-001
21		Elbow	1	643386-405
22		Tubing-316 SS, 3/8" OD X .035" Wall	1	N/A
23		Cover, Knob	1	003553-001
24		Gasket, Cover Plate	1	003834-001

Item	Note	Description	Quantity	Part Number
25	2, 5	Gland, Packing:		
		Buna-N	1	515849-001
		PTFE	1	515849-002
26		Housing, Outer:		
		S6	1	517568-002
		S7	1	517569-002
27		Nipple, Pipe:		
		Standard	1	643338-402
		NACE	1	645264-401
28		Nut, Hex Heavy, Meter Cover:		
		S6	48	006385-400
		S7	48	642148-409
29	2	O-Ring, Cover:		
		Buna-N	1	517552-001
		FKM	1	517552-002
30	2	O-Ring, Packing Gland:		
		Buna-N	1	640888-001
		FKM	1	640894-001
31		Pin, Locating Dowel	2	003348-001
32		Pin, Groove, 5/64 x 1/2"	1	006053-002
33		Plate, Caution	1	006571-001
34		Plate, Cover	1	003440-001
35	1	Plate, Lubrication	1	515873-001
36		Plug, Pipe, 1/2" NPT:		
		Standard	2	006505-002
		NACE	2	645242-402
37		Screw, Adapter Cover	2	642019-416
38		Screw, Base Plate, #10-32 x 7/8"	2	640835-001
39		Screw, Calibrator Mount #6-32 x 5/16"	2	006048-002
40		Screw, Cover Plate, #10-32 x 3/8"	2	006045-002
41		Screw, Drive, Caution Plate	8	009880-400
42		Screw, Knob Cover, #10-24 x 3/4"	2	006481-003
43		Screw, Nozzle to Inner Mech:		
		5/8-11 x 3-1/2"	4	P8000017724
		NACE	4	P8000017724
44		Screw, Packing Gland:		
		7/16-14 x 1-1/2"	4	006410-002
45		Seal, Lead and Wire	2	001627-400
46		Shaft Assembly, Calibrator:		
		S6	1	517553-001

Item	Note	Description	Quantity	Part Number
		S7	1	517553-002
47		Coupling, Lower Drive	1	503408-001
48		Coupling, Upper Drive	1	501801-002
49		Shaft:		
		S6	1	517573-001
		S7	1	517573-002
50		Pin, Groove, 5/64 x 1/2"	2	006053-002
51		Stem Assembly, Adjusting	1	009838-001
52		Ball	2	006427-001
53		Plate, Base	1	003552-001
54		Plate, Retainer	1	003556-001
55		Spring, Knob	2	003557-001
56		Stem, Adjusting	1	003551-001
57		Stud, Meter Cover:		
		S6	24	640446-404
		S7	24	665432-404
58		Tube, Oil	1	514658-001
59		Washer, Cinch Bolt	4	514584-001
60		Washer	3	002917-400

Inner Mechanism

Item	Note	Description	Quantity	Part Number
61		Base	1	500186-002
62		Block:		
		Standard (Up to 1,000 SSU)	1	536590-001
		Hi-Viscosity 1 - For 1,000 SSU to 3,000 SSU	1	536590-201
		Hi-Viscosity 2 - For 3,000 SSU to 5,000 SSU	1	536590-202
		Hi-Viscosity 3 - For 5,000 SSU to 10,000 SSU	1	536590-203
63		Body	1	515174-001
64		Bolt, Eye	2	643877-401
65		Cap, Adjusting Screw	1	536276-001
66		Shaft, Drive Gear	1	003569-001
67		Cover:		
		With Vent	1	536277-004
		Without Vent	1	536277-001
68		Dowel, Cover and Base	2	501205-001
69		Fitting, Pitot	1	072186-001
70	6	Gear, Calibrator Drive:		
		Barrels, Standard and All Iron	1	504194-001
		Barrels, LPG	1	536529-001
		Hectoliters, Standard and All Iron	1	515304-001
		Hectoliters, LPG	1	536533-001
71	1	Bushing:		

Item	Note	Description	Quantity	Part Number
		Standard and All Iron	1	065311-001
		LPG	1	512797-001
72		Pin	2	500418-001
73	6	Gear, Idler:		
		Barrels, Standard and All Iron	1	516304-001
		Barrels, LPG	1	536528-001
		Hectoliters, Standard and All Iron	1	515302-001
		Hectoliters, LPG	1	536532-001
74		Bushing, LPG	1	512797-001
75		Gear, Jackshaft	1	500225-001
76	6	Gear, Jackshaft Pinion:		
		Barrels and Hectoliters	1	500704-001
		Imperial Gallons	1	512249-001
77		Lug, Lifting, Rotor Assembly	1	552125-001
78		Nut, Rotor Shaft, 1-1/2"-12	2	641997-402
79		Pin, Cotter, 1/16 x 1/2"	1	001095-401
80		Pin, Groove, 3/32 x 1/2"	1	006136-002
81		Plug, Pipe, 1/2" NPT	1	006505-002
82		Rotor and Blade Assembly:		
		Standard	1	537691-001
		All Iron	1	536279-002
		LPG	1	537691-003
83		Bar, Adjusting	1	536440-001
84	2	Bearing, Rotor:		
		Standard and All Iron	2	513168-001
		LPG	2	513168-002
85	2	Bearing, Thrust:		
		Standard and All Iron	1	643999-401
		LPG	1	644010-401
86	2	Blade Assembly, Lower:		
		Standard and LPG (Up to 1,000 SSU)	1	536266-001
		All Iron (Up to 1,000 SSU)	1	537714-001
		Std. – Modified for 1,000 SSU to 3,000 SSU	1	536266-101
		Std. – Modified for 3,000 SSU to 5,000 SSU	1	536266-102
		Std. – Modified for 5,000 SSU to 10,000 SSU	1	536266-103
		Std. – Modified for 200°F Maximum	1	536266-104
		Std. – Modified for 1,000 SSU to 3,000 SSU and 200 °F	1	536266-105
		Std. – Modified for 3,000 SSU to 5,000 SSU and 200 °F	1	536266-106
		Std. – Modified for 5,000 SSU to 10,000 SSU and 200 °F	1	536266-107
		A.I. – Modified for 5,000 SSU to 10,000 SSU	1	537714-103
87	2	Bearing, Blade:		
		Nylon Retainer	4	644412-405
88		Bushing, Blade	2	512353-001

Item	Note	Description	Quantity	Part Number
89		Pin, Cotter, 3/32 x 1-1/4"	2	006373-001
90		Shaft, Blade Bearing	2	551361-001
91		Blade Assembly, Middle:		
		Standard (Up to 1,000 SSU) and LPG	1	536263-001
		All Iron (Up to 1,000 SSU	1	536587-001
		Std. – Modified for 1,000 SSU to 3,000 SSU	1	536263-101
		Std. – Modified for 3,000 SSU to 5,000 SSU	1	536263-102
		Std. – Modified for 5,000 SSU to 10,000 SSU	1	536263-103
		Std. – Modified for 200 °F Maximum	1	536263-104
		Std. – Modified for 1,000 SSU to 3,000 SSU and 200 °F	1	536263-105
		Std. – Modified for 3,000 SSU to 5,000 SSU and 200 °F	1	536263-106
		Std. – Modified for 5,000 SSU to 10,000 SSU and 200 °F	1	536587-103
		A.I. – Modified for 5,000 SSU to 10,000 SSU	1	536587-103
92	2	Bearing, Blade:		
		Nylon Retainer	4	644412-405
93		Bushing, Blade	2	512353-001
94		Pin, Cotter, 3/32 x 1-1/4"	4	006373-001
95		Shaft, Blade Bearing	2	551361-001
96	2	Blade Assembly, Upper:		
		Standard (Up to 1,000 SSU) and LPG	1	536265-001
		All Iron (Up to 1,000 SSU)	1	537713-001
		Std. – Modified for 1,000 SSU to 3,000 SSU	1	536265-101
		Std. – Modified for 3,000 SSU to 5,000 SSU	1	536265-102
		Std. – Modified for 5,000 SSU to 10,000 SSU	1	536265-103
		Std. – Modified for 200 °F Maximum	1	536265-104
		Std. – Modified for 1,000 SSU to 3,000 SSU and 200 °F	1	536265-105
		Std. – Modified for 3,000 SSU to 5,000 SSU and 200 °F	1	536265-106
		Std. – Modified for 5,000 SSU to 10,000 SSU and 200 °F	1	536265-107
		A.I. – Modified for 5,000 SSU to 10,000 SSU	1	537713-103
97	2	Bearing, Blade:		
		Nylon Retainer	4	644412-405
98		Bushing, Blade	2	512353-001
99		Pin, Cotter, 3/32 x 1-1/4"	2	006373-001
100		Shaft, Blade Bearing	2	551361-001
101	2	Cam and Shaft Assembly	1	536254-001
102		Cam	1	536251-001
103		Key	1	536255-001
104		Shaft	1	536253-001
105		Collar	1	536269-001
106		Cone, Shaft	1	536273-001

Item	Note	Description	Quantity	Part Number
107		Key	1	500192-001
108		Lock, Rotor Bearing, Lower	1	536403-001
109		Lock, Rotor Bearing, Upper	1	537069-001
110		Nut, Adjusting Screw, 1/2"-20 UNF-2B	2	640671-001
111		Pin, Roll, 5/32 x 1"	1	010527-400
112		Pin, Rotor Cover Roller	6	500197-001
113		Plate, Rotor Cover Roller Pin	12	536272-001
114		Plate, Lock Assembly	2	512965-001
115		Plate, Rotor Gear	1	536268-001
116		Pin, Dowel	1	000004-001
117	2	Roller, Rotor Cover	6	500196-001
118		Rotor, Sub Assembly:		
		Standard (Up to 1,000 SSU)	1	536259-001
		Std. – Modified for 1,000 SSU to 3,000 SSU	1	536259-101
		Std. – Modified for 3,000 SSU to 5,000 SSU	1	536259-102
		Std. – Modified for 5,000 SSU to 10,000 SSU	1	536259-103
119		Dowel	9	500415-001
120		Screw, Cap, 3/8"-16 UNC-2A, Drilled	8	642048-419
121	7	Sleeve, Lower:		
		1993 to present (Not sold as a separate component - included with item 118)	—	N/A
		Prior to 1993	1	536258-002
122	7	Sleeve, Upper:		
		1993 to present (Not sold as a separate component - included with item 118)	—	N/A
		Prior to 1993	1	536258-001
123		Screw, Adjusting	1	536274-001
124		Screw, Cap, 1/4-20 x 1/2"	12	006775-002
125		Screw, Cap, 3/8-16 x 1-1/4"	6	640367-001
126		Washer, Flat	1	646636-401
127		Screw, #10-32 x 3/8" Nylock	2	643339-401
128		Screw, Adjusting Screw Cap, 5/16-18 x 1-1/4"	4	006151-002
129		Screw, Body, 5/8-11 x 1-3/4"	24	006156-002
130		Screw, Cap, Body and Block, 1/2-13 x 2"	3	646134-401
131	1	Screw, Drive, Caution Tag	2	006220-002
132		Screw, Pitot, #10-32 x 1/2"	2	006110-002
133		Screw, Set, 1/4-20 x 1/4"	1	006538-001
134		Shaft, Idler Gear	1	500233-001
135		Sleeve, Assembly:		
		Standard and All Iron	1	500412-001
		LPG	1	512791-001

Item	Note	Description	Quantity	Part Number
136		Bushing:		
		Standard and All Iron	2	519882-002
		LPG	2	512796-001
137	1	Tag, Caution	1	006572-001
138		Washer	3	014012-200
139		Washer:		
		Standard and All Iron	1	009615-400
		LPG	1	060554-001
140		Washer, Flat	2	006929-001
141		Washer, Lock	3	642482-406

Inner Mechanism General Assembly Part Numbers

Description	Part Number
Barrel Geared, Standard	536279-091
Barrel Geared, All Iron Trim	536279-092
Barrel Geared, LPG Trim	536279-093
Hectoliter Geared, Standard	536279-291
Hectoliter Geared, All Iron Trim	536279-292
Hectoliter Geared, LPG Trim	536279-293

Notes

Note	Description
1	Not illustrated
2	Recommended stock
3	Indicates change since last revision
4	When ordering, include meter model and gearing, temperature and API gravity, and table
5	See Packing Glands Parts List (PO01042) for component parts
6	Only standard gearing is listed; for additional gearing combinations, see PD Meters Gear Train application bulletin (AB01023)
7	Apply a small amount of Loctite (part number 645001-401) to sleeve before installing in rotor

The specifications contained herein are subject to change without notice and any user of said specifications should verify from the manufacture that the specifications are currently in effect. Otherwise, the manufacturer assumes no responsibility for the use of specifications which may have been changed and are no longer in effect.

[TechnipFMC.com](https://www.technipfmc.com)

Copyright © 2024 TechnipFMC plc. All rights reserved.

TechnipFMC Corporate Headquarters
13460 Lockwood Road
Building S01
Houston, TX 77044 USA
+1 281.591.4000

USA Operations
1602 Wagner Avenue
Erie, PA 16510 USA
+1 814.898.5000

Germany Operations
Smith Meter GmbH
Regentstrasse 1
25474 Ellerbek, Germany
+49 4101 304.0