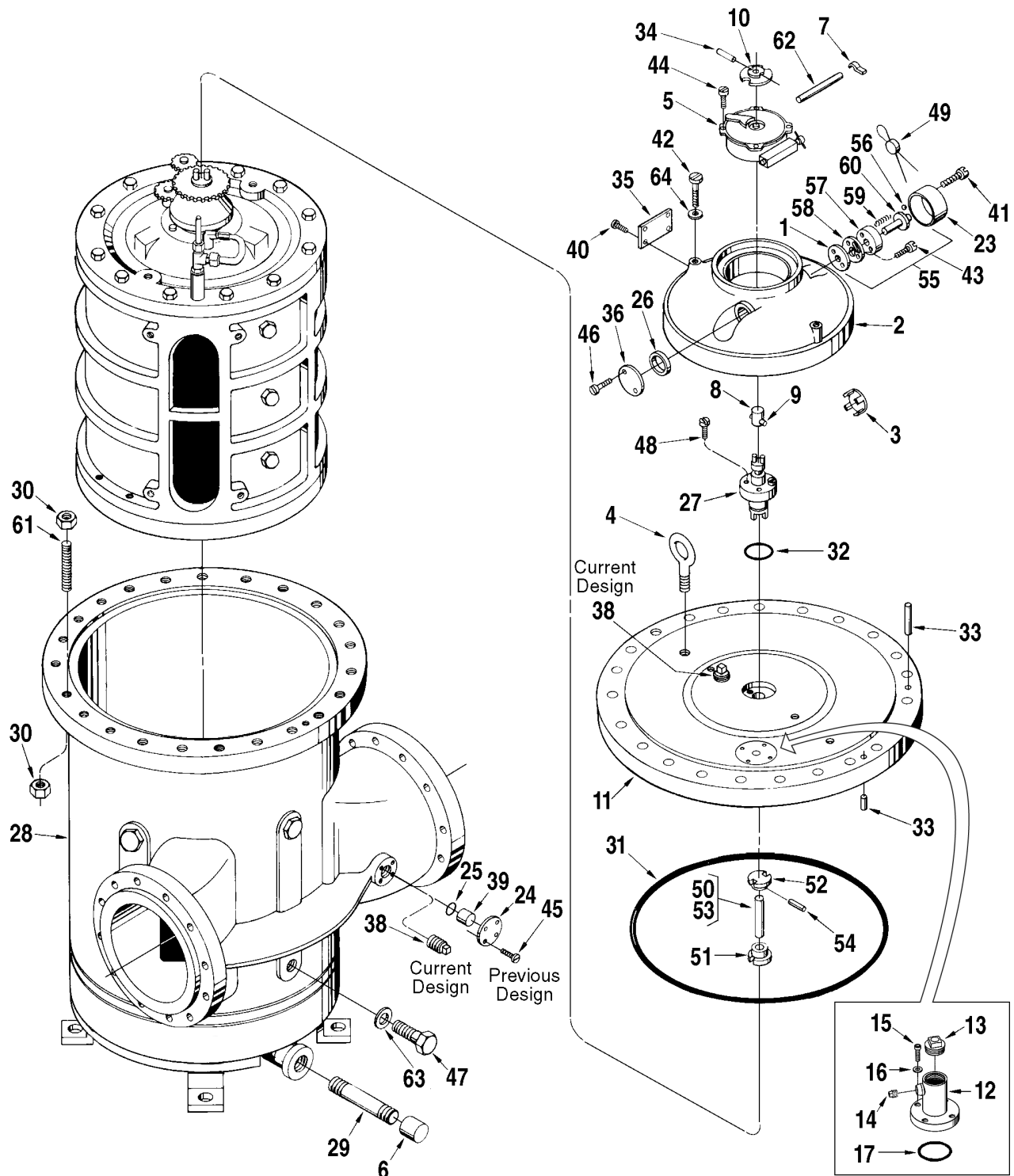
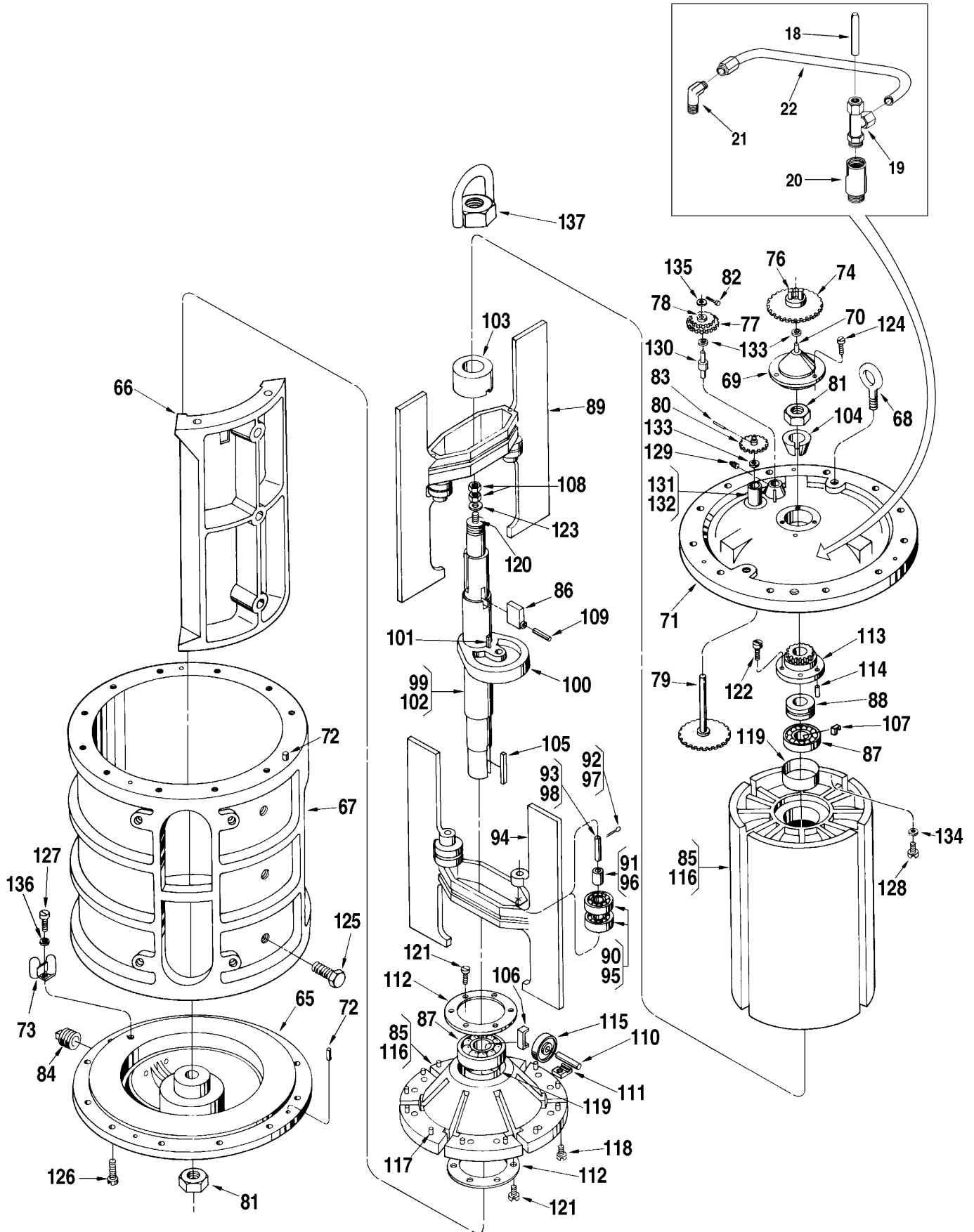


Meter, PD Series, JA10-S6, S7

Bulletin PO01022 Issue/Rev. 0.3 (4/18)



Inner Mechanism



Item	Description	Qty.	Part Number
1	Adapter, Calibrator Adjusting	1	512372-001
2	Adapter:		
	Standard and ATC.....	1	515755-001
	ATG	1	516608-001
3	Blank, Snap In	1	015533-401
4	Bolt, Eye:		
	Pre 2004.....	2	065433-005
	2004 - Current.....	2	655425-402
5	+ Calibrator:		
	Manual.....	1	512059-001
	With ATC (Standard).....	1	512060-001
	With ATC (Special Drilled)	1	516130-xxx
	Dummy Calibrator.....	1	516105-001
6	Cap, Pipe:		
	Standard.....	1	640259-002
	NACE	1	645238-403
7	Clamp, Oil Tube	1	003905-001
8	Coupling Assembly:		
	Standard, Used on 3/16" Shaft	1	005969-001
	Used on Xmitters with 1/4" Shaft	1	005969-002
9	Pin.....	1	003540-001
10	Coupling, Drive	1	072103-001
11	Cover:		
	With Vent Kit:		
	S6.....	1	517560-001
	S7	1	517561-001
	W/O Vent Kit (Pre 2004):		
	S6.....	1	517560-002
	S7	1	517561-002
	Vent:		
12	Vent Housing	1	554606-003
13	Pipe Plug, 2" NPT	1	645350-401
14	Pipe Plug, 1/2" NPT	1	645242-402
15	Screw.....	4	646205-402
16	Washer.....	4	065309-002
17	O-Ring	1	646612-401
18	Spacer	1	554059-004
19	Fitting.....	1	646200-401
20	Adapter	1	554336-001
21	Elbow	1	643386-405
22	3/8" Tubing.....	1	644759-402
23	Cover, Knob	1	003553-001
24	Flange, Temperature Well (Previous Design).....	1	012026-001
25	Gasket, Temperature Well (Previous Design).....	1	060341-001
26	Gasket, Cover Plate.....	1	003834-001
27	+@2 Gland, Packing:		
	Buna-N.....	1	515849-001
	PTFE ¹	1	515849-002
28	Housing, Outer:		
	S6.....	1	517568-002
	S7	1	517569-002
29	Nipple, Pipe:		
	Standard	1	643338-402
	NACE	1	645264-401
30	Nut, Hex Heavy, Meter Cover:		
	S6.....	48	006385-400

¹ Polytetrafluoroethylene (PTFE).

Item	Description	Qty.	Part Number
	S7.....	48	642148-409
31	+ O-Ring, Cover:		
	Buna-N.....	1	517552-001
	Viton.....	1	517552-002
32	+ O-Ring, Packing Gland:		
	Buna-N.....	1	640888-001
	Viton.....	1	640894-001
33	Pin, Locating Dowel.....	2	003348-001
34	Pin, Groove, 5/64 x 1/2".....	1	006053-002
35	Plate, Caution.....	1	006571-001
36	Plate, Cover.....	1	003440-001
37	* Plate, Lubrication.....	1	515873-001
38	Plug, Pipe, 1/2" NPT:		
	Standard.....	2	006505-002
	NACE.....	2	645242-402
39	Plug, Temperature Well (Previous Design).....	1	012025-001
40	Screw, Drive, Caution Plate.....	8	009880-400
41	Screw, Knob Cover, #10-24 x 3/4".....	2	006481-003
42	Screw, Adapter Cover.....	2	642043-432
43	Screw, Base Plate, #10-32 x 7/8".....	2	640835-001
44	Screw, Calibrator Mount #6-32 x 5/16".....	2	006048-002
45	Screw, Cap, 5/16-18 x 3/4" (Previous Design).....	4	006409-002
46	Screw, Cover Plate, #10-32 x 3/8".....	2	006045-002
47	R Screw, Nozzel to Inner Mech:		
	5/8-11 x 3-1/2".....	4	P8000017724
	NACE.....	4	P8000017724
48	Screw, Packing Gland:		
	7/16-14 x 1-1/2".....	4	006410-002
49	Seal, Lead and Wire.....	2	001627-400
50	Shaft Assembly, Calibrator:		
	S6.....	1	517553-001
	S7.....	1	517553-002
51	Coupling, Lower Drive.....	1	503408-001
52	Coupling, Upper Drive.....	1	501801-002
53	Shaft:		
	S6.....	1	517573-001
	S7.....	1	517573-002
54	Pin, Groove, 5/64 x 1/2".....	2	006053-002
55	Stem Assembly, Adjusting.....	1	009838-001
56	Ball.....	2	006427-001
57	Plate, Base.....	1	003552-001
58	Plate, Retainer.....	1	003556-001
59	Spring, Knob.....	2	003557-001
60	Stem, Adjusting.....	1	003551-001
61	Stud, Meter Cover:		
	S6.....	24	640446-404
	S7.....	24	665432-404
62	Tube, Oil.....	1	514658-001
63	Washer, Cinch Bolt.....	4	514584-001
64	Washer.....	2	002917-400

Inner Mechanism

Item	Description	Qty.	Part Number
65	Base.....	1	500186-002
66	Block:		
	Standard (Up to 1,000 SSU)	1	536590-001
	Hi-Viscosity 1 - For 1,000 SSU to 3,000 SSU	1	536590-201
	Hi-Viscosity 2 - For 3,000 SSU to 5,000 SSU	1	536590-202
	Hi-Viscosity 3 - For 5,000 SSU to 10,000 SSU	1	536590-203
67	Body.....	1	515174-001
68	Bolt, Eye	2	643877-401
69	Cap, Adjusting Screw.....	1	536276-001
70	Shaft, Drive Gear	1	003569-001
71	Cover:		
	With Vent	1	536277-004
	Without Vent	1	536277-001
72	Dowel, Cover and Base.....	2	501205-001
73	Fitting, Pitot.....	1	072186-001
74	@3 Gear, Calibrator Drive:		
	Barrels, Standard and All Iron	1	500236-001
	Barrels, LPG.....	1	512792-001
	Hectoliters, Standard and All Iron.....	1	512339-001
	Hectoliters, LPG	1	515337-001
75	* Bushing:		
	Standard and All Iron	1	065311-001
	LPG.....	1	512797-001
76	Pin	2	500418-001
77	@3 Gear, Idler:		
	Barrels, Standard and All Iron	1	500705-001
	Barrels, LPG.....	1	512793-001
	Hectoliters, Standard and All Iron.....	1	505002-001
	Hectoliters, LPG	1	515336-001
78	Bushing, LPG	1	512798-001
79	Gear, Jackshaft.....	1	500225-001
80	@3 Gear, Jackshaft Pinion:		
	Barrels and Hectoliters.....	1	500704-001
81	Nut, Rotor Shaft.....	2	641997-402
82	Pin, Cotter, 1/16 x 1/2"	1	001095-401
83	Pin, Groove, 3/32 x 1/2".....	1	006136-002
84	Plug, Pipe, 1/2" NPT	1	006505-002
85	Rotor and Blade Assembly:		
	Standard.....	1	537690-001
	All Iron	1	537690-002
	LPG	1	537690-003
86	Bar, Adjusting.....	1	536440-001
87	+ Bearing, Rotor:		
	Standard and All Iron	2	511369-002
	LPG.....	2	511369-003
88	+ Bearing, Thrust:		
	Standard and All Iron	1	643999-401
	LPG.....	1	644010-401
89	+ Blade Assembly, Upper:		
	Standard and LPG (Up to 1,000 SSU).....	1	536265-001
	All Iron (Up to 1,000 SSU).....	1	537517-016
	Std. - Modified for 1,000 SSU to 3,000 SSU.....	1	536265-101
	Std. - Modified for 3,000 SSU to 5,000 SSU.....	1	536265-102
	Std. - Modified for 5,000 SSU to 10,000 SSU.....	1	536265-103
	Std. - Modified for 200°F Max.	1	536265-104

Item	Description	Qty.	Part Number
	Std. - Modified for 1,000 SSU to 3,000 SSU and 200°F	1	536265-105
	Std. - Modified for 3,000 SSU to 5,000 SSU and 200°F	1	536265-106
	Std. - Modified for 5,000 SSU to 10,000 SSU and 200°F	1	536265-107
90	+ Bearing, Blade	4	644412-405
91	Bushing, Blade	2	512353-001
92	Pin, Cotter, 3/32 x 1-1/4"	2	006373-001
93	Shaft, Blade Bearing	2	551361-001
94	+ Blade Assembly, Lower:		
	Standard and LPG (Up to 1,000 SSU).....	1	536266-001
	All Iron (Up to 1,000 SSU).....	1	537517-016
	Std. - Modified for 1,000 SSU to 3,000 SSU	1	536266-101
	Std. - Modified for 3,000 SSU to 5,000 SSU	1	536266-102
	Std. - Modified for 5,000 SSU to 10,000 SSU.....	1	536266-103
	Std. - Modified for 200°F Max.	1	536266-104
	Std. - Modified for 1,000 SSU to 3,000 SSU and 200°F	1	536266-105
	Std. - Modified for 3,000 SSU to 5,000 SSU and 200°F	1	536266-106
	Std. - Modified for 5,000 SSU to 10,000 SSU and 200°F	1	536266-107
95	+ Bearing, Blade	4	644412-405
96	Bushing, Blade	2	512353-001
97	Pin, Cotter, 3/32 x 1-1/4"	2	006373-001
98	Shaft, Blade Bearing	2	551361-001
99	+ Cam and Shaft Assembly	1	536254-002
100	Cam	1	537215-001
101	Key.....	1	536255-001
102	Shaft.....	1	536253-001
103	Collar	1	536269-002
104	Cone, Shaft.....	1	536273-001
105	Key	1	500192-001
106	Lock, Lower Rotor Bearing	1	511374-001
107	Lock, Upper Rotor Bearing	1	537068-001
108	Nut, Adjusting Screw	2	640671-001
109	Pin, Roll, 5/32 x 1"	1	010527-400
110	Pin, Rotor Cover Roller.....	4	500197-001
111	Plate, Rotor Cover Roller Pin	8	500414-001
112	Plate, Lock.....	2	511372-001
113	Plate, Rotor Gear.....	1	536268-002
114	Pin, Dowel.....	1	000004-001
115	+ Roller, Rotor Cover	4	500196-001
116	Rotor, Sub Assembly:		
	Standard (Up to 1,000 SSU).....	1	511364-001
	Std. - Modified for 1,000 SSU to 3,000 SSU	1	511364-101
	Std. - Modified for 3,000 SSU to 5,000 SSU	1	511364-102
	Std. - Modified for 5,000 SSU to 10,000 SSU.....	1	511364-103
	Std. - Modified for 1,000 SSU to 3,000 SSU and 200°F	1	511364-105
	Std. - Modified for 3,000 SSU to 5,000 SSU and 200°F	1	511364-106
	Std. - Modified for 5,000 SSU to 10,000 SSU and 200°F	1	511364-107
117	Dowel	9	500415-001
118	Screw, Cap, 3/8"-16 UNC-2A, Drilled	8	642048-419
119	@4 Sleeve, Rotor:		
	Current Style (Not sold as a separate component - included with item 116) -		-----
	Previous Style	2	511375-001
120	Screw, Adjusting	1	536274-001
121	Screw, Cap, 1/4-20 x 3/4"	12	005061-400
122	Screw, Cap, 3/8-16 x 1-1/4".....	6	640367-001
123	Washer, Flat.....	1	646636-401
124	Screw, Cap, 5/16-18 x 1-1/4"	4	006151-002
125	Screw, Cap, Body and Block, 1/2-13 x 2"	3	646134-401

Item	Description	Qty.	Part Number
126	Screw, 5/8-11 x 1-3/4"	24	006156-002
127	Screw, #10-32 x 1/4"	2	006110-002
128	Screw, 3/8-16 x 1/2"	1	065159-002
129	Screw, Set, 1/4-20 x 1/4"	1	006538-001
130	Shaft, Idler	1	500233-001
131	Sleeve, Assembly:		
	Standard and All Iron.....	1	500412-001
	LPG	1	512791-001
132	Bushing:		
	Standard and All Iron	2	519882-002
	LPG	2	512796-001
133	Washer.....	3	014012-200
134	Washer.....	2	641838-401
135	Washer:		
	Standard and All Iron.....	1	009615-400
	LPG	1	060554-001
136	Washer, Lock	2	642482-406
137	Lug, Rotor Assembly Lifting	1	552125-001

Inner Mechanism General Assembly Numbers

Barrel Geared, Standard.....	536280-091
Barrel Geared, All Iron Trim	536280-092
Barrel Geared, LPG Trim	536280-093
Hectoliter Geared, Standard	536280-291
Hectoliter Geared, All Iron Trim.....	536280-292
Hectoliter Geared, LPG Trim	536280-293

* Not illustrated.

+ Recommended stock.

R Indicates change since last revision.

@1 Note 1: When ordering, include product temperature range, specific or API gravity, API table used, and meter and gearing calibrator is to be used in conjunction with.

@2 Note 2: See Form No. [PO01042](#) for component parts.

@3 Note 3: Only standard gearing is listed. For additional gearing combinations, see Gear Train Bulletin [AB01023](#).

@4 Note 4: Apply a small amount of Loctite (Part No. 645001-401) to sleeve before installing in rotor.

The specifications contained herein are subject to change without notice and any user of said specifications should verify from the manufacturer that the specifications are currently in effect. Otherwise, the manufacturer assumes no responsibility for the use of specifications which may have been changed and are no longer in effect.
Contact information is subject to change. For the most current contact information, visit our website at TechnipFMC.com and click on the "Contact Us" link.

TechnipFMC.com

© TechnipFMC 2018 All rights reserved. PO01022 Issue/Rev. 0.3 (4/18)

TechnipFMC
FMC Technologies
Measurement Solutions, Inc.
500 North Sam Houston Parkway West,
Suite 100
Houston, Texas 77067 USA
P:+1 281.260.2190

USA Operation
1602 Wagner Avenue
Erie, Pennsylvania 16510 USA
P:+1 814.898.5000

Germany Operation
Smith Meter GmbH
Regentstrasse 1
25474 Ellerbek, Germany
P:+49 4101 304.0