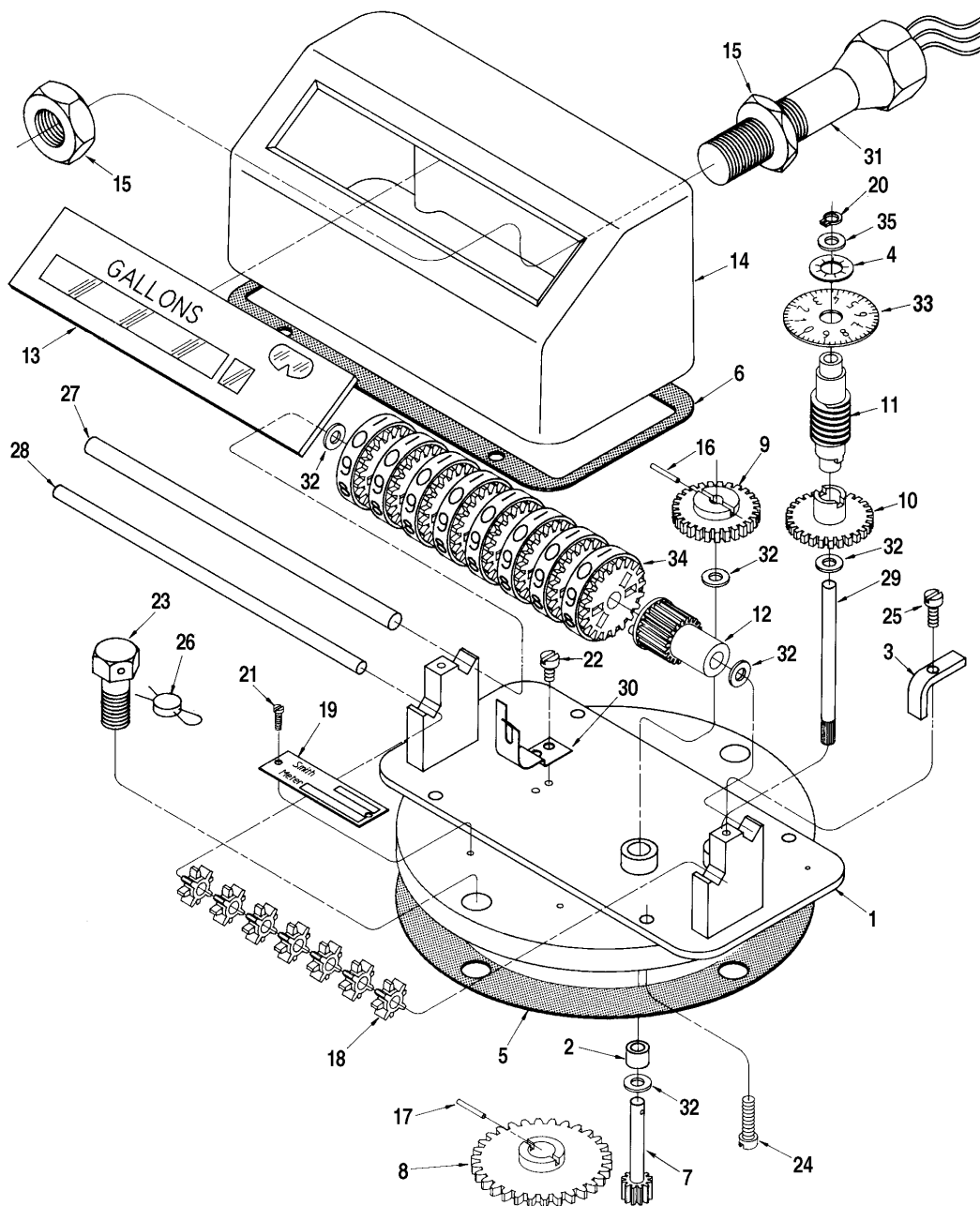


# 200A Non-Reset Counter and SM-200A Stack Monitor

Bulletin PO01034 Issue/Rev. 0.1 (1/23)



## 200A & SM-200A Series

Item	Notes	Description	Quantity	Part Number
1		Base (All Models):	1	550654-001
2	1	Bushing	1	P8000016957
3		Clamp, Shaft	2	550652-001
4		Fastener, Spring Grip	1	642331-404
5	2	Gasket, Base	1	002536-001
6	2	Gasket, Housing	1	550651-001
7		Gear, Counter Drive:		
		204, 204D, 204M2, 224, 224D, 224L	1	008054-001
		227, 234L, 234M, 237L, 254M	1	008054-001
		207, 214I	1	504597-001
		209	1	070589-001
		214, 214D, 220L, 220M, 225, 244M, 244M2, 245	1	008055-001
8		Gear Drive:		
		204, 204D, 204M2, 224, 224D, 224L, 227, 234L, 234M, 237L, 254M—3/8" Shaft	1	003488-001
		204, 204D, 204M2, 224, 224D, 224L, 227, 234L, 234M, 237L, 254M—3/16" Shaft	1	008659-001
		207, 214I—3/8" Shaft	1	504593-001
		207, 214I—3/16" Shaft	1	504594-001
		209—3/8" Shaft	1	070745-001
		209—3/16" Shaft	1	502659-001
		214, 214D, 220L, 220M, 225, 244M, 244M2, 245—3/8" Shaft	1	003491-001
		214, 214D, 220L, 220M, 225, 244M, 244M2, 245—3/16" Shaft	1	550668-001
9		Gear, First Inner Drive:		
		204, 204D, 204M2, 207, 214, 214D, 220M, 214I	1	550668-001
		225, 234L, 234M, 244M, 244M2, 254M	1	550668-001
		209	1	550658-001
		220L	1	550661-001
		224, 224D, 224L, 227, 237L, 245	1	550672-001
10		Gear, Second Inner Drive:		
		204, 204D, 204M2, 207, 214, 214D, 220M, 214I	1	550669-001
		225, 234L, 234M, 244M, 244M2, 254M	1	550669-001
		209	1	550655-001
		220L	1	550662-001
		224, 224D, 224L, 227, 237L, 245	1	550673-001
11		Gear, Worm	1	550656-001
12		Gear, Worm Drive	1	550660-001
13		Glass:		
		207, 209, 227—Barrels	1	550650-001
		244M, 254M—Cubic Meters	1	550650-002
		220L, 224L— Litres	1	550665-001
		234L, 237L— Litres	1	550674-001
		204D, 214D, 224D—Dekalitres	1	550665-003
		225, 245—Barrels	1	550665-004
		244M2, 234M—Cubic Meters	1	550675-001
		220M—Cubic Meters	1	551004-001
		204, 214, 214I, 224—Gallons	1	550665-002
14		Housing:		
		Standard	1	550653-001
		Modified for Pulser (Stack Monitor):		

## 200A & SM-200A Series

		Pulser Reading Right-Hand Wheel	1	550653-002
		Pulser Reading 2nd Wheel From Right	1	550653-003
		Pulser Reading 3rd Wheel From Right	1	550653-004
15	3	Nut, 5/8"-18 UNF (Stack Monitor Models Only)	2	640819-410
16		Pin, Groove, 1/16" x 1/2"	1	006054-002
17		Pin, Groove, 1/16 x 5/8"	1	006028-002
18		Pinion, Transfer	7	518361-001
19		Plate, Name	1	014101-200
20		Ring, Retaining	1	640386-001
21		Screw, #2-1/8"	2	009880-400
22		Screw, #6-32 x 1/4"	2	006145-002
23		Screw, #6-32 x 1/4"	2	006205-003
24		Screw, #8-32 x 5/8"	4	644965-401
25		Screw, #6-32 x 3/8"	2	003213-400
26	2	Seal, Lead and Wire	1	001627-403
27		Shaft, Number Wheel	1	518364-001
28		Shaft, Pinion	1	518365-001
29		Shaft, Worm	1	518366-001
30		Spring, Pinion	1	518355-001
31	2	Switch, Pulser, SPDT:		
		UL Approved	1	645351-401
		CSA Approved	1	645351-402
32	4	Washer:		
	5	.005" Thick	A/R	640600-001
	5	.010" Thick	A/R	006332-001
	5	.020" Thick	A/R	006331-001
	5	.040" Thick	A/R	009615-400
33		Wheel, Accuracy	1	518346-002
34	2	Wheel, Numeral:		
		Standard:		
		200 and 200A	8	518362-001
		SM-200A	7	518362-001
		Modified with Target for Pulser (SM-200A Only)	1	518362-002
35		Washer	1	641985-401

Note	Description
1	Indicates change since last revision
2	Recommended stock
3	Apply Loctite (P/N 645001-401) to nut after positioning switch
4	Use as required to maintain .010" to .020" end play
5	As required (A/R)

The specifications contained herein are subject to change without notice and any user of said specifications should verify from the manufacture that the specifications are currently in effect. Otherwise, the manufacturer assumes no responsibility for the use of specifications which may have been changed and are no longer in effect.

[TechnipFMC.com](http://TechnipFMC.com)

Copyright © 2023 TechnipFMC plc. All rights reserved.

TechnipFMC Corporate Headquarters  
13460 Lockwood Road  
Building S01  
Houston, TX 77044 USA  
+1 281.591.4000

USA Operations  
1602 Wagner Avenue  
Erie, PA 16510 USA  
+1 814.898.5000

Germany Operations  
Smith Meter GmbH  
Regentstrasse 1  
25474 Ellerbek, Germany  
+49 4101 304.0