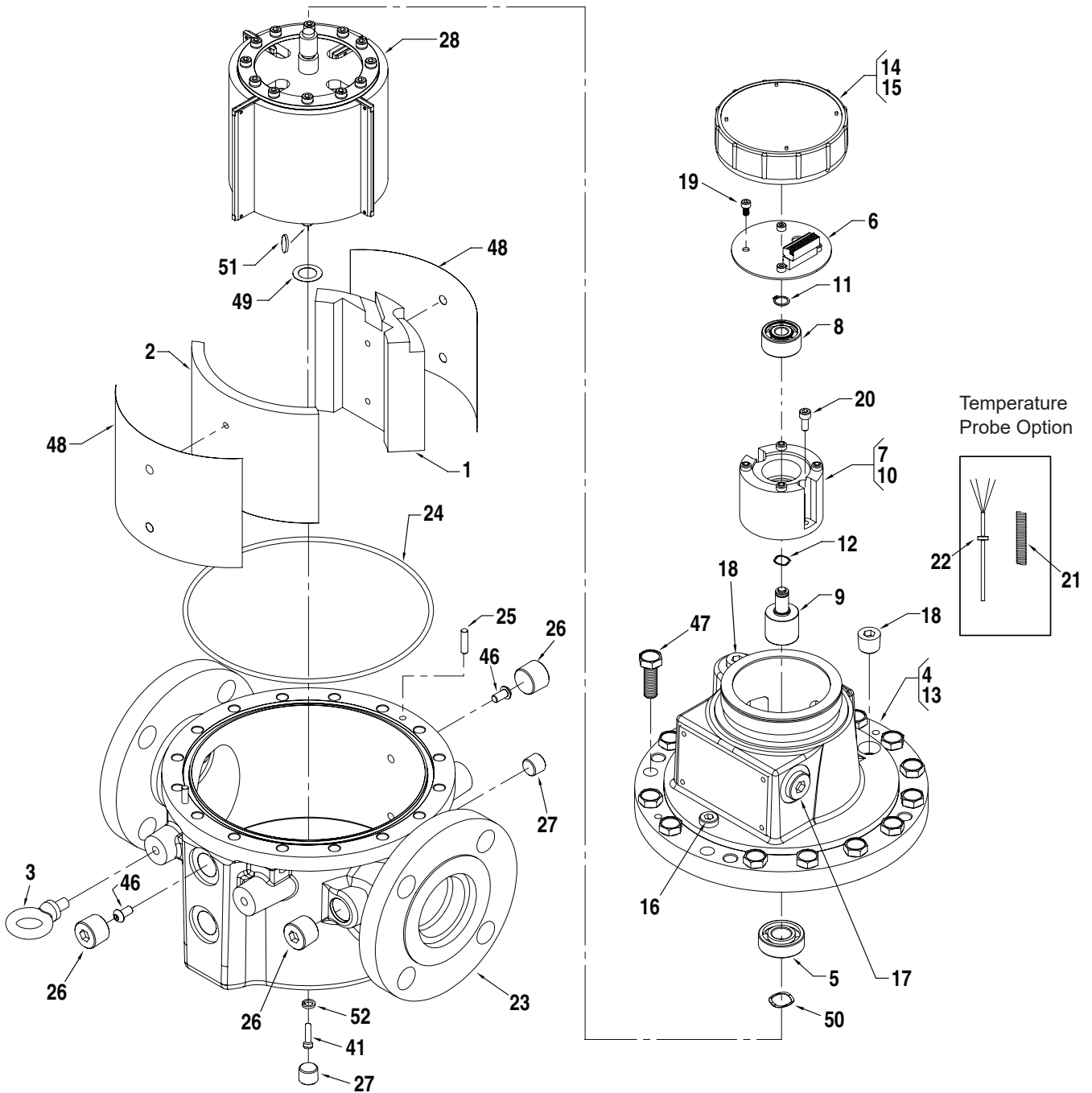
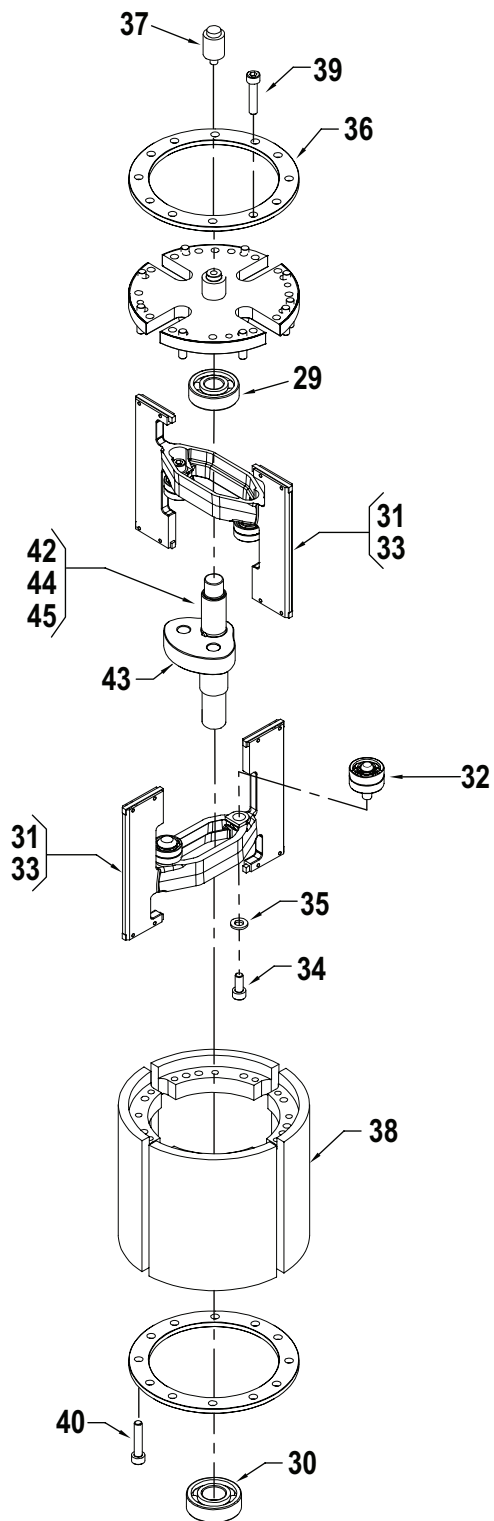


# Meter, PD, Genesis™ Series, 2" Steel

Bulletin PO01052 Issue/Rev. 0.1 (11/19)



## Rotor and Blade Assembly



Item	Description	Qty.	Part Number
1	Block .....	1	556024-002
2	Block, Measuring Chamber .....	1	556025-002
3	Bolt, Eye .....	2	647000-423
4	@1 Cover Assembly:		
	w/o Temperature Probe & 1/2" NPT Cover Ports .....	1	556021-191
	* w/ Temperature Probe & 1/2" NPT Cover Ports .....	1	556021-193
	w/o Temperature Probe & M20 x 1.5 Cover Ports .....	1	556021-192
	* w/ Temperature Probe & M20 x 1.5 Cover Ports .....	1	556021-194
5	Bearing, 6202 Ceramic Ball (cannot be purchased separately) .....	1	647000-412
6	+@1 Board, P.C. Assembly HRE .....	1	Consult Factory
7	Coupling Assembly .....	1	P8000007622
8	Bearing, 5200 Double Row Ball (cannot be purchased separately).	1	647000-414
9	Coupling, Magnetic .....	1	647000-426
10	Coupling Support, Magnetic.....	1	P8000006731
11	Ring, Snap .....	1	640000-010
12	Washer, Spring .....	1	640000-009
13	Cover, Meter		
	Standard (w/o Temperature Probe) & 1/2" NPT Cover Ports	1	556020-101
	w/ Temperature Probe and Test Well & 1/2" NPT Cover Ports	1	556020-103
	Standard (w/o Temperature Probe) & M20 x 1.5 Cover Ports	1	556020-102
	w/ Temperature Probe and Test Well & M20 x 1.5 Cover Ports	1	556020-104
14	Cover, Junction Box .....	1	000583-201
15	* Gasket, Junction Box.....	1	013403-200
16	Plug, 1/4-18 NPT .....	1	647000-422
17	Plug		
	1/2-14 NPT .....	3	647000-424
	M20 x 1.5 .....	3	670016-420
18	Plug, 3/8-18 NPT Pipe .....	4	647000-404
19	Screw C, M4 x .7 x 8 mm Socket Head .....	4	647000-427
20	Screw C, M5 x .8 x 12 mm Socket Head .....	2	647000-407
21	Spring, .054 x 3/8" x 3" Temperature Probe.....	1	647000-408
22	Temperature Probe .....	1	556032-001
23	Housing:		
	150# ASME .....	1	P8000005542
	300# ASME .....	1	P8000006577
	DN 50 PN 16 .....	1	P8000006578
	DN 50 PN 25 .....	1	P8000006579
24	+ O-ring, Cover, GFLT Viton .....	1	647000-446
25	Pin, M5 x 20 mm Dowel .....	2	647000-420
26	Plug, 1/2" NPT .....	5	647000-424
27	Plug, 1/4" NPT .....	2	647000-422
28	R@3 Rotor and Blade Assembly .....	1	P8000006708
29	+ Bearing, 6201 Ceramic Ball (cannot be purchased separately).....	1	647000-411
30	+ Bearing, 6202 Ceramic Ball (cannot be purchased separately).....	1	647000-412
31	+ Blade Assembly .....	2	556013-101
32	Bearing Assembly .....	4	556012-191
33	Blade.....	2	556011-101
34	Screw C, M5 x .8 x 12 mm Socket Head .....	4	647000-407
35	Washer, M5.....	4	647000-406
36	Blade Retainer .....	2	556016-001
37	Coupling, Magnetic Coupler .....	1	647000-418
38	Rotor .....	1	556019-101
39	Screw, Blade Retainer, M5 x .8 x 25 mm Socket Head .....	12	647000-405
40	Screw, Blade Retainer, M5 x .8 x 25 mm Socket Head .....	4	647000-405

Item	Description	Qty.	Part Number
41	Screw, Rotor Shaft, M6 x .1 x 25 mm Socket Head.....	1	647000-482
42	Shaft Assembly .....	1	P8000006188
43	+ Cam .....	1	556014-001
44	*+ Key, 1/8" .....	1	647000-415
45	Shaft .....	1	P8000005472
46	Screw C, M6 x 1 x 10 mm Button Head.....	4	P8000005094
47	Screw C, M10 x 1.5 x 35 mm.....	16	647000-456
48	Shim:		
	.001" .....	A/R	556220-001
	.002" .....	A/R	556220-002
	.003" .....	A/R	556220-003
	.004" .....	A/R	556220-004
	.005" .....	A/R	556220-005
49	Washer, Shim:		
	1 x 5/8 x .001" Thick .....	A/R	647000-480
	1 x 5/8 x .002" Thick .....	A/R	647000-479
	1 x 5/8 x .003" Thick .....	A/R	647000-478
	1 x 5/8 x .004" Thick .....	A/R	647000-477
	1 x 5/8 x .005" Thick .....	A/R	647000-476
50	+ Washer, Spring.....	1	647000-410
51	Key .....	1	647000-500
52	Belleville Washer .....	1	P8000005566

\* Not illustrated

A/R As required.

+ Recommended Spare Parts

@1 When ordering, please provide the specific meter serial number(s) from the nameplate of the meter in which the board(s) would be installed. The following information must also be provided if different than the parameters of the original meter: UNITS, PULSES PER UNIT, and VISCOSITY.

@2 If Rotor (Item 37) or Blades (Item 31) are replaced, it is recommended to consider replacing Shims (Item 47), Shim Washers (Item 49) and Spring Washer (Item 50) to comply with the allowable clearances.

@3 If ordering a Rotor and Blade Assembly for a previous "D-Bore" design meter, use kit part number P8000019031. If the housing does not have ASME #150 flanges, consult factory for rotor assembly replacement part number.

R Revision made since last update.

The specifications contained herein are subject to change without notice and any user of said specifications should verify from the manufacturer that the specifications are currently in effect. Otherwise, the manufacturer assumes no responsibility for the use of specifications which may have been changed and are no longer in effect.