

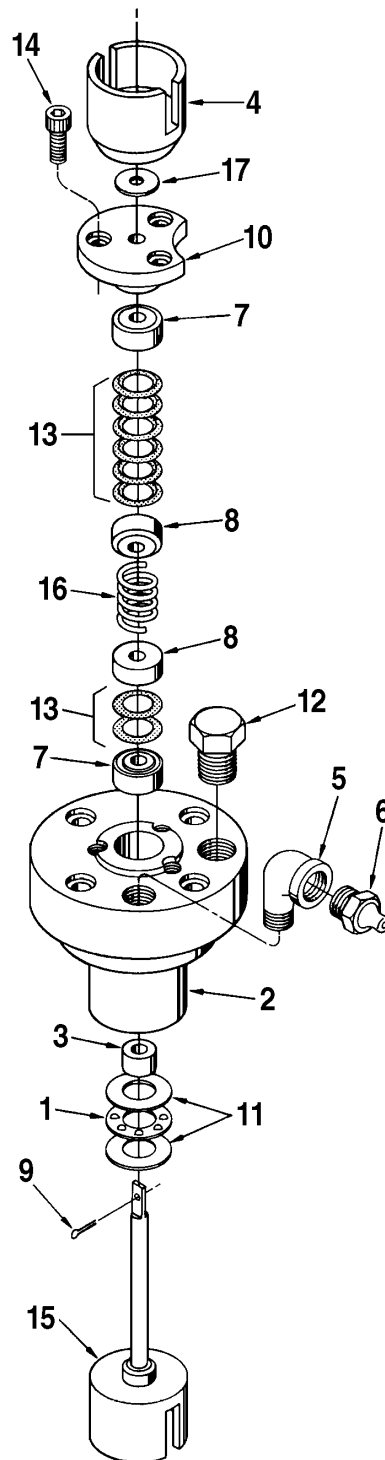
PG-222

Packing Gland

Bulletin P001055 Issue/Rev. 0.0 (4/15)



We put you first.
And keep you ahead.





**We put you first.
And keep you ahead.**

Item		Description	Quantity	Part Number
1		Bearing, Thrust	1	070360-001
2		Body	1	554652-001
3		Bushing	1	012007-001
4		Coupling	1	515554-001
5		Elbow	1	645234-401
6		Fitting, Lubrication	1	006408-001
7		Follower, Packing	2	516619-001
8		Follower, Spring	2	516618-001
9		Pin, Cotter, 1/16 x 3/8"	1	009825-400
10		Plate Gland	1	517230-001
11		Plate, Thrust Bearing	2	001111-001
12		Reservoir, Oil	1	551436-001
13	@1	Ring, Packing	8	641839-401
14		Screw	3	006409-002
15		Shaft Assembly (NACE Low Temperature)	1	551487-001
16		Spring, Packing	1	002639-002
17		Washer, Thrust	1	641985-401
		General Assembly Description		Part Number
		NACE with Buna-N		554653-001
@1 The PG-222 packing gland will require eight packing rings. Install so the shaft rotates without binding.				

The specifications contained herein are subject to change without notice and any user of said specifications should verify from the manufacturer that the specifications are currently in effect. Otherwise, the manufacturer assumes no responsibility for the use of specifications which may have been changed and are no longer in effect.

Contact information is subject to change. For the most current contact information, visit our website at www.fmctechnologies.com/measurementsolutions and click on the "Contact Us" link in the left-hand column.