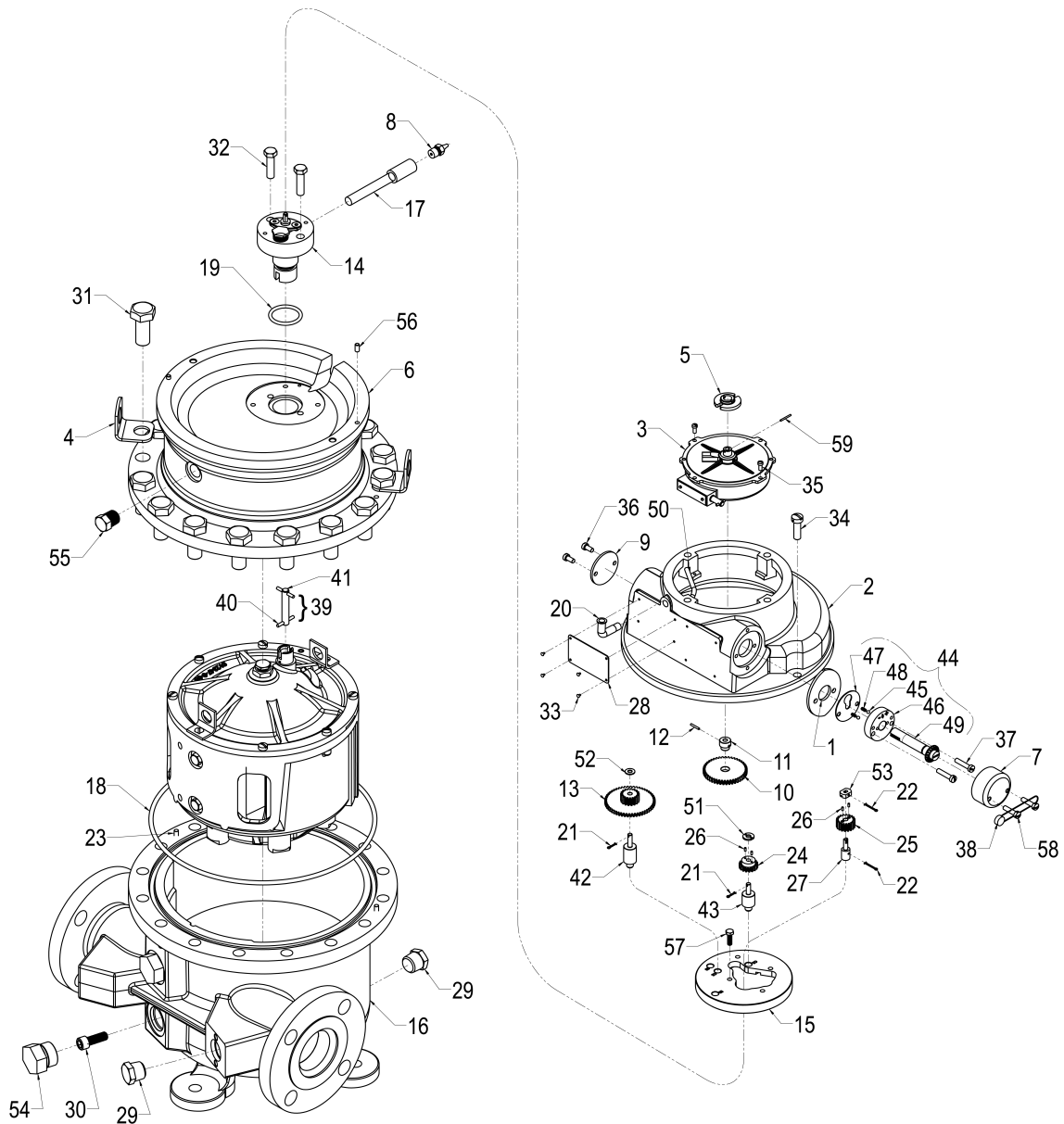


# Model C2-S3 2" Steel PD Meter

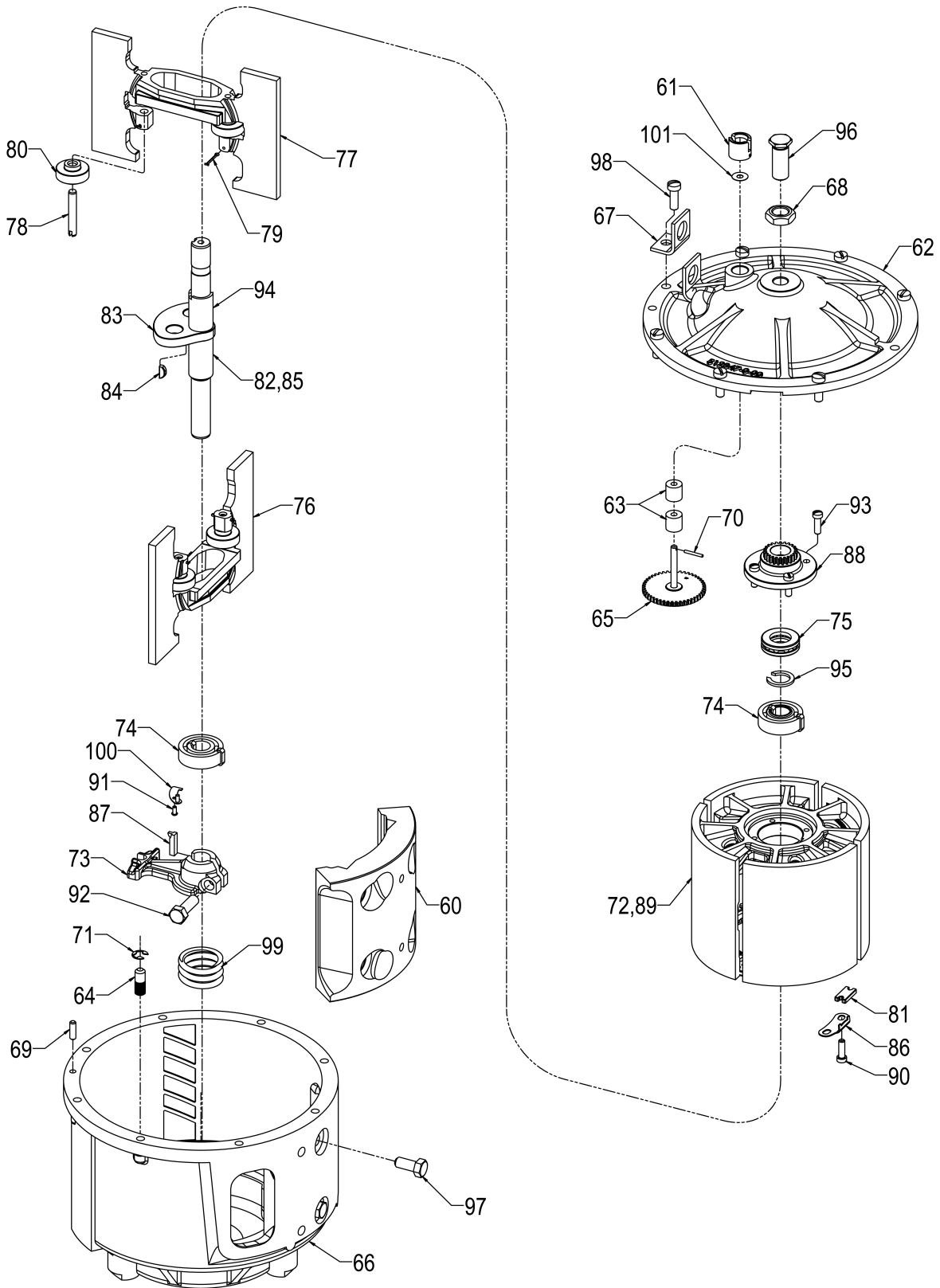
ASME Section VIII/Low Temperature Material

Bulletin PO01080 Issue/Rev. 0.0 (1/23)

## Outer Exploded View



# Inner Mechanism Exploded View



## Outer Parts

Item	Note	Description	Quantity	Part Number
1		Adapter, Adjusting Stem	1	512372001
2		Adapter, Standard and ATC	1	511946001
3	2	Calibrator:		
		Standard	1	512059001
		Dummy	1	516105001
		Temperature Corrected, Standard	1	512060001
	4	Temperature Corrected, Special Temperature or API	1	516130xxx
4		Lifting Lug	2	550622004
5	2	Coupling, Drive		072103001
6	7	Cover Assembly, Outer:	1	P8000014593
7		Cover, Knob	1	003553001
8		Fitting	1	006408001
9		Cover Plate	1	003440001
10	2, 5	Gear, Calibrator Drive		
		5:1 US Gallons, 96%	1	071926001
		5:1 US Gallons, 100%	1	514580001
		1:1 Dekaliters, 96%	1	071950001
		1:1 Dekaliters, 100%	1	538185001
11		Bushing:	1	010181001
12		Pin	1	006053002
13	2, 5	Gear, Intermediate:		
		5:1 US Gallons, 96%	1	071925001
		5:1 US Gallons, 100%	1	071925001
		1:1 Dekaliters 96%	1	071949001
		1:1 Dekaliters, 100%	1	538184001
14	2	Gland, Packing, PG-30, FKM VG109-90	1	P8000016147
15		Plate, Gear	1	P8000016349
16	7	Housing, Outer	1	P8000014632
17		Lubrication Assembly, Packing Gland	1	514784001
18	2	O-Ring, Cover, Low Temperature FKM	1	P8000018292
19	2	O-Ring, Packing Gland, Low Temperature FKM	1	P8000018189
20		Oiler	1	006588001
21		Pin, Cotter, 1/16 x 3/8"	2	009825400
22		Pin, Cotter, 1/16 x 5/8"	2	641042401
23		Pin, Groove, Housing	2	007900400
24	2, 5	Pinion Reversing	1	071923001
25	2, 5	Pinion, Jackshaft	1	071922001
26		Pin	4	001126001
27		Shaft	1	P8000016264
28		Plate, Caution	1	006571001
29		Plug, Pipe, 1/2" NPT	2	645242402
30		Cinch Bolt	2	P8000013353
31		Screw, Housing:		
		5/8-11 X 1.5"	16	P8000011536
32		Screw, Cap-Packing Gland:	2	006511002
33		Screw, Drive:		
		#2 x 1/8"	8	009880400
34		Screw:		

Item	Note	Description	Quantity	Part Number
		5/16-18 x 7/8", Drilled	2	065075003
35		Screw, #6-32 x 5/16"	2	006048002
36		Screw, #10-32 x 3/8"	2	006045002
37		Screw, #10-32 x 7/8"	2	640835001
38	2	Seal, Lead, and Wire	3	001627400
39		Shaft Assembly, Link	1	512069001
40		Pin, Groove, 1/8 x 1"	2	640780001
41		Shaft Link	1	512068002
42		Shaft, Gear	1	P8000016251
43		Shaft, Reversing Pinion	1	P8000016249
44		Stem Assembly, Adjusting	1	009838001
45	6	Ball	2	006427001
46	6	Plate, Base	1	003552001
47	6	Plate, Retainer	1	003556001
48	6	Spring, Knob	2	003557001
49	6	Stem, Adjusting	1	003551001
50		Tube, Oil	1	514658001
51		Washer, Flat	1	003599001
52		Washer, Gear	1	009614400
53		Washer, Jackshaft	1	001125001
54		Hydraulic fitting	2	P8000013352
55		Plug - Pipe Hex HD 3/8 NPT	1	645242401
56		Pin groove Type 2A, .19 DIA X .38 LG	2	641007401
57		Screw 10-32 X .625 LG	2	P8000016368
58		Screw, #10-24 x 3/4", Drilled	2	006481003
59		Pin, groove Type 1 1/16 DIA X 5/8	1	006028002

## Inner Mechanism Parts

Item	Note	Description	Quantity	Part Number
60		Block:		
		Standard	1	003824001
		Hi-Viscosity - For 2,000 SSU to 10,000 SSU	1	003824041
61		Coupling, Jackshaft	1	512064001
62		Cover, Inner:		
		Standard and All Iron	1	512856001
		LPG	1	512856002
63		Bushing:		
		Standard and All Iron	2	519882002
		LPG	2	504666001
64		Dowel, Locating Arm	1	512872001
65		Gear, Jackshaft:		
		Standard	1	512850001
66		Housing, Inner	1	512341001
67		Lug, Lifting	2	512002001
68		Nut, Adjusting Screw, 1/2"-20, UNF-2B	1	640671001
69		Pin, Cover, 3/16 x 5/8"	1	641007402
70		Pin, Groove, 5/64 x 5/8	1	009593400
71		Ring, Retaining	1	065303001
72		Rotor Assembly, Complete:		

Item	Note	Description	Quantity	Part Number
		Standard	1	515704001
		All Iron	1	515704002
		LPG	1	515704003
73		Arm, Locating	1	512368001
74	2	Bearing and Clip, Rotor:		
		Standard and All Iron	2	516107001
		LPG	2	516107002
75	2	Bearing, Thrust:		
		Standard and All Iron	1	009712001
		LPG	1	505016001
76		Blade Assembly, Lower:		
		Standard	1	009523024
		All Iron	1	009707008
		LPG	1	505009001
		Std. - Modified for 2,000 SSU to 10,000 SSU	1	009524041
		Std. - Modified for 200°F Maximum	1	009524042
		Std. - Modified for 2,000 SSU to 10,000 SSU and 200°F Maximum	1	009524043
		A.I. - Modified for 2,000 SSU to 10,000 SSU	1	009707048
77		Blade Assembly, Upper:		
		Standard	1	009523024
		All Iron	1	009707008
		LPG	1	505007001
		Std. - Modified for 2,000 SSU to 10,000 SSU	1	009523041
		Std. - Modified for 200°F Maximum	1	009523042
		Std. - Modified for 2,000 SSU to 10,000 SSU and 200°F Maximum	1	009523043
		A.I. - Modified for 2,000 SSU to 10,000 SSU	1	009707048
78		Pin, Blade Roller	4	010666001
79		Pin, Cotter, 1/16 x 5/8"	4	641042401
80	2	Roller, Blade:		
		Standard and All Iron	2	011478001
		LPG	2	500504001
81	2	Block, Blade	4	010289002
82	2	Cam and Shaft Assembly	1	512468001
83		Cam	1	003738001
84		Key	1	003753001
85		Shaft	1	512344001
86		Clamp, Blade Block	4	010212001
87		Key, Locating Arm	1	512873001
88		Plate Assembly, Rotor Gear	1	512467001
89		Rotor, Sub Assembly:		
		LPG Version	1	005999042
		All Others	1	005999002
90		Screw, #10-32 x 5/8"	8	008338400
91		Screw, #4-40 x 1/4"	2	006012002
92		Screw, 5/16-18 x 1"	1	643668405
93		Screw, #10-32 x 5/8"	4	008338400
94		Sleeve, Rotor Shaft	1	512848001
95		Spacer, Bearing	1	512849001
96		Screw, Adjusting	1	003526002

Item	Note	Description	Quantity	Part Number
97		Screw, Cap, 5/16-18 x 3/4"	2	002046400
98		Screw, 1/4-20 x 3/4"	8	005061400
99	2	Spring, Rotor	1	003746002
100		Spring, Rotor Bearing Lock	1	003745001
101		Washer, Flat	1	641985401

## Inner Mechanism General Assembly Numbers

Item	Note	Description	Quantity	Part Number
		Standard		512874091
		All Iron		512874092
		LPG Trim		512874093
		Standard, High Viscosity - For 2,000 SSU to 10,000 SSU		512874941
		Standard, High Temperature - For 200 °F Maximum		512874951

Note	Description
1	Not illustrated
2	Recommended stock
3	Indicates change since last revision
4	When ordering, include product temperature range, specific or API Gravity, API Table used, and meter and gearing the calibrator is to be used in conjunction with
5	Only standard gearing is listed. For additional gearing combinations, see Gear Train Bulletin <a href="#">AB01023</a>
6	Components sold as assembly part number 009838001; not available as individual parts
7	Cover and housing only sold as a unit



The specifications contained herein are subject to change without notice and any user of said specifications should verify from the manufacture that the specifications are currently in effect. Otherwise, the manufacturer assumes no responsibility for the use of specifications which may have been changed and are no longer in effect.

USA Operations  
1602 Wagner Avenue  
Erie, PA 16510 USA  
+1 814.898.5000

TechnipFMC Corporate Headquarters  
13460 Lockwood Road  
Building S01  
Houston, TX 77044 USA  
+1 281.591.4000

Germany Operations  
Smith Meter GmbH  
Regentstrasse 1  
25474 Ellerbek, Germany  
+49 4101 304.0

[TechnipFMC.com](http://TechnipFMC.com)

Copyright © 2023 TechnipFMC plc. All rights reserved.