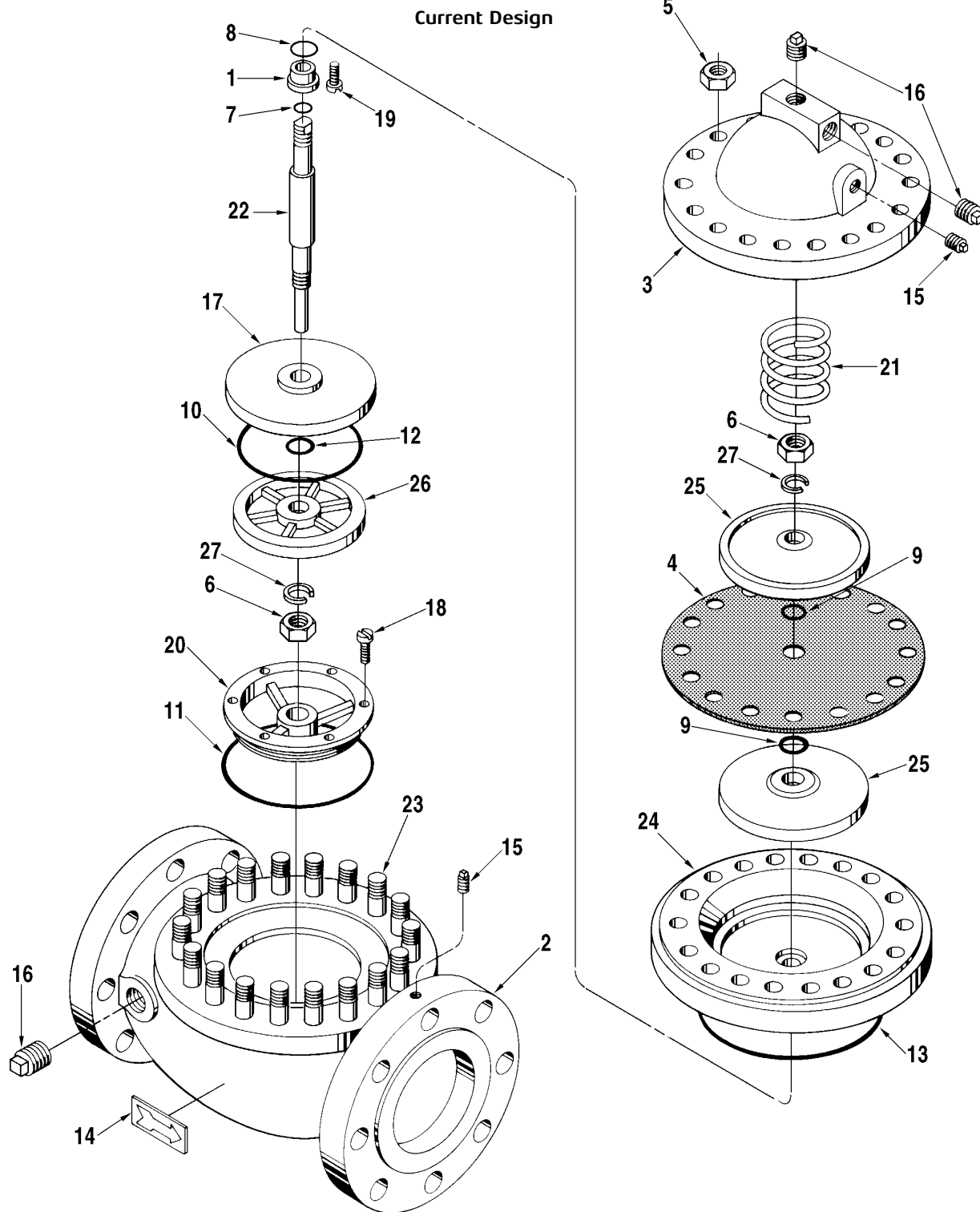


Valve, Hydraulic Power Chamber, Model 200PC, 8-inch

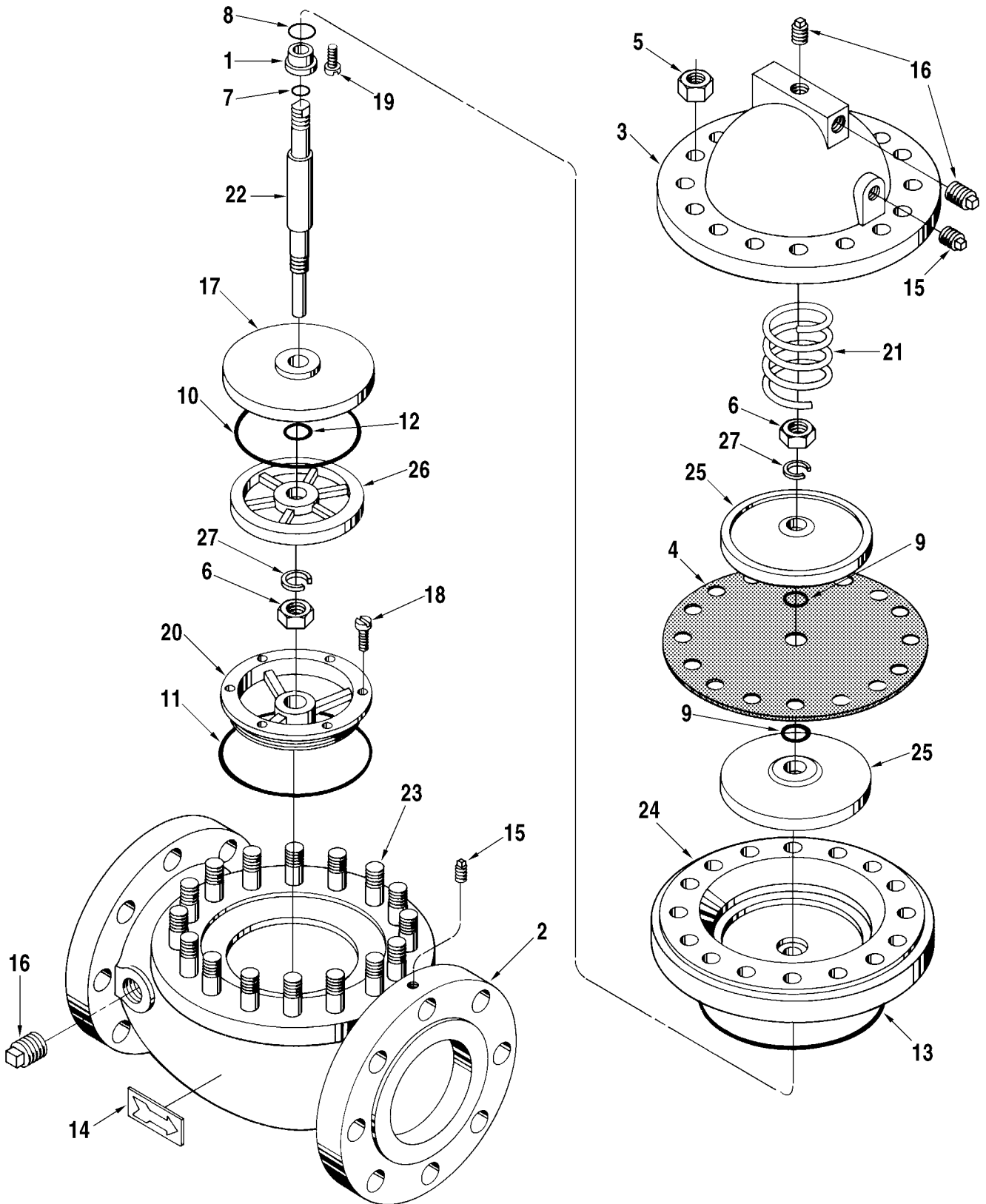
Bulletin P003035 Issue/Rev. 0.0 (9/15)



We put you first.
And keep you ahead.



Previous Design



Item		Description	Quantity	Part Number	
				Current Design	Previous Design
1	R	Bearing, Stem	1	Note 1	
2	R@2	Body	1	Note 1	
3	R@2	Cover	1	Note 1	
4	+@2	Diaphragm:			
		Buna-N	1	529656-001	507404-001
		Viton	1	529656-002	507404-002
5	@2	Nut, Cover:			
		7/8"-9	18	645201-406	-----
		3/4"-10	16	-----	642138-406
6		Nut, Stem, 1-1/8"-12	2	640819-408	
7	+	O-Ring, Bearing:			
		Buna-N	1	640888-010	
		Viton	1	640894-412	
8	+R	O-Ring, Bearing, Viton	1	640798-438	
9	+	O-Ring, Diaphragm			
		Buna-N	1	640887-015	
		Viton	1	640798-424	
10	+	O-Ring, Retainer:			
		Buna-N	2	507576-001	
		Viton	2	507576-003	
11	+	O-Ring, Seat:			
		Buna-N	1	641070-432	
		Viton	1	641276-431	
12	+	O-Ring, Stem:			
		Buna-N	1	640887-015	
		Viton	1	640798-424	
13	+	O-Ring, Wafer:			
		Buna-N	1	641069-471	
		Viton	1	640894-456	
14		Plate, Arrow Flow	1	508553-001	
15		Plug, Pipe:			
		Standard - 1/8" NPT	3	006073-002	
		Lo-Temp. - 1/8" NPT	3	640820-402	-----
16		Plug, Pipe:			
		Standard - 3/4" NP	7	006878-002	
		Lo-Temp. - 3/4" NPT	7	640820-405	-----
17	R	Retainer, O-Ring	1	Note 1	
18		Screw, #10-32 x 1/2"	6	643923-401	
19		Screw, Truss Head, 1/4-20 x 3/8"	2	644278-401	
20		Seat:			
		Standard	1	529212-001	
	R	Lo-Temp.	1	Note 1	-----
21		Spring	1	525356-001	
22	R	Stem	1	Note 1	



**We put you first.
And keep you ahead.**

Item		Description	Quantity	Part Number	
				Current Design	Previous Design
23		Stud:			
		Standard - 7/8"-9	18	643082-408	-----
	R	Standard - 3/4"-10	16	-----	Note 1
	R	Lo-Temp. - 7/8"-9	18	Note 1	-----
24	R@2	Wafer, Insert:	1	Note 1	
25	R	Washer, Diaphragm	1	Note 1	
26	R	Washer, O-Ring	1	Note 1	
27		Washer, Stem	2	643164-408	
	+	Recommended stock.			
	R	Indicates change since last revision.			
Note 1		Not available as spare part.			
	@2	As of November 1991, the current design valve incorporates 18 body studs (Item 23) and corresponding number of cover and diaphragm holes. Current design also incorporates Alberta Boiler Branch, Canadian registration.			

1 Polytetrafluoroethylene (PTFE).

Revisions included in P003035 Issue/Rev. 0.0 (9/15):

Replaced P1050.01X which has been made obsolete. Removal of several part numbers, indicated by "R"; Addition of Note 1.

The specifications contained herein are subject to change without notice and any user of said specifications should verify from the manufacturer that the specifications are currently in effect. Otherwise, the manufacturer assumes no responsibility for the use of specifications which may have been changed and are no longer in effect.

Contact information is subject to change. For the most current contact information, visit our website at www.fmctechnologies.com/measurementsolutions and click on the "Contact Us" link in the left-hand column.