

Series 423, Steel Body Diaphragm Operated Two-Way Non-Freeze Valves

Bulletin SSIN061 Issue/Rev. 0.1 (11/18)

The **Series 423 Valve** is perfect for use as a liquid dump valve on high pressure separators. The trim and seat are total immersed in the fluid to prevent freeze-ups. The Series 423 Valve can be used in any other pressure vessel where freeze-ups could be a problem.

Features

- **Non-Freeze Construction** – Prevents freeze-up at the plug and seat.
- **Hammer Union Construction** – Reduced downtime for repair.
- **Replaceable Trim (RNCE available)** – Reduces cost.



Standard Specifications

Body Material – Low Carbon Steel

End Connections

- Vessel 2" MNPT
- Inlet Tube 1" FNPT
- Outlet 1" FNPT

Body Cover – Steel Union

Diaphragm Operator

- Steel, 26 sq. in.
- Nylon Reinforced Buna N Diaphragm,
- Maximum Recommended Operating Pressure 70 psi
- Maximum Containment Pressure 100 psi

Packing – Non-Lubricated Buna N

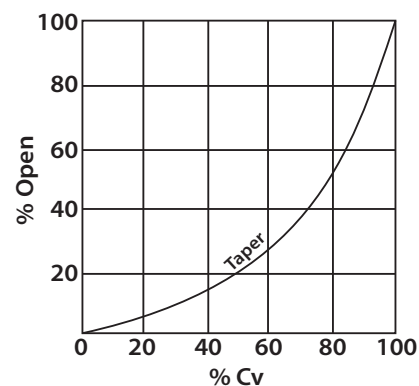
Maximum Working Pressure – 3000 psi

Temperature Limits – -20°F to 250°F

Stem Material – 303 Stainless Steel

Plug and Seat – See schedule below

Trim Characteristics



NOTES:

1. Refer to engineering section for valve sizing charts.
2. Standard topworks is direct action normally closed.
3. Cv values are for fully open inner valve.
4. Part numbers applicable only when valve desired is exactly as described above.
5. To order specify Model Number, Part Number, Trim Description.
6. See attached side for parts list.

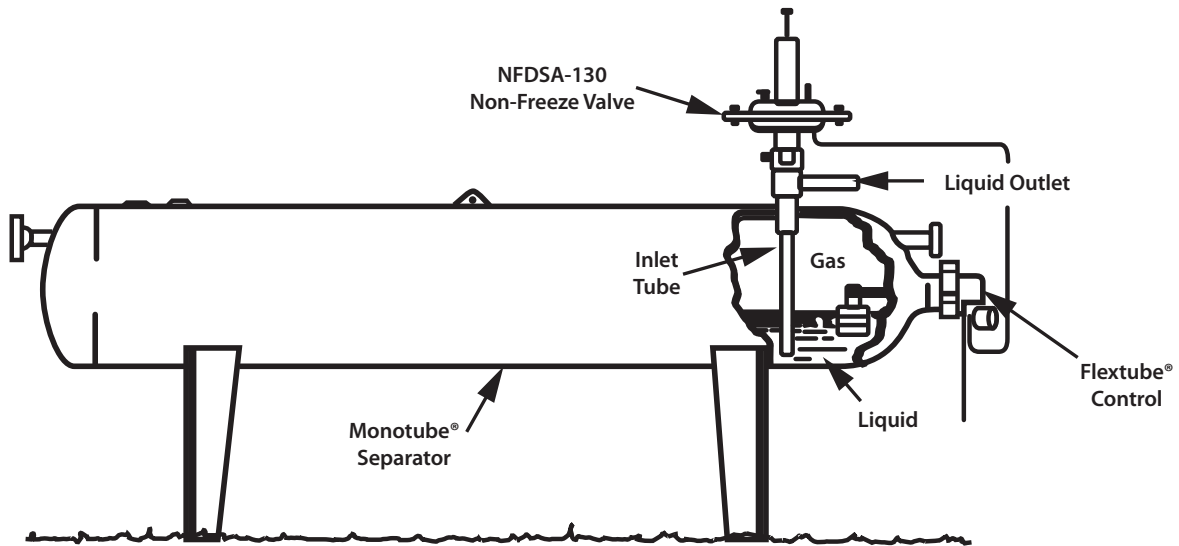
Ordering Information

Size	Model Number	Max W.P.	Trim Size	Full Open	Part Number			
				Cv	Taper			Weight (lbs)
					416 S.S. *	316 S.S.	Carbide	
2" x 1"	NFDSA-130-423	3000 psi	1/4"	1.7	P534845	--	--	45

Notes:

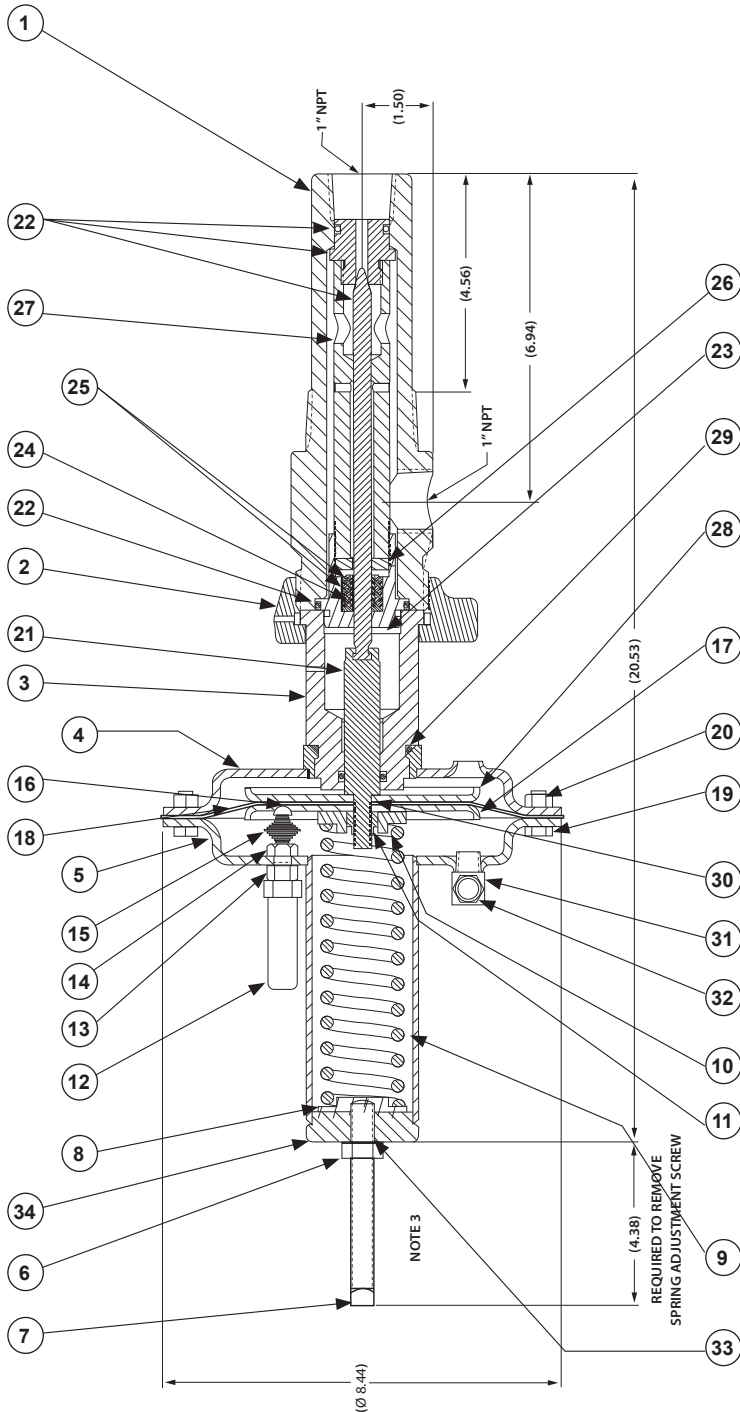
* *416 Hardened Stainless Steel.

Typical Hook-up



Diaphragm Operated Two-Way Non-Freeze Valves

Series 423, Steel Body



Parts		
Item	Description	Qty.
1	Body: Series 424, 1" NPT	1
2	Nut: 2" Hammer Union	1
3	Yoke Assembly	1
4	Case: Lower #20 std.	1
5	Case: Upper	1
6	Nut: Hex Jam 1/2	1
7	Set Screw: SQ HD 1/2 - 13 UNC x 4.0 LG	1
8	Upper Spring Rest	1
9	Spring: 180#, 1-3/4" x 6	1
10	Spring Rest: Lower	1
11	Nut: Flexloc 3/8 - 24	1
12	Sightglass: Travel Indicator	1
13	Hex Nut: 3/8	1
14	Bushing: Travel Indicator	1
15	Spring Indicator	1
16	Travel Indicator Pin	2
17	Diaphragm Plate	1
18	Diaphragm: #20	12
19	Cap Screw: Hex Head, 5/16 x .75 lg	12
20	Hex Nut: 5/16	1
21	Stem: Upper	2
22	Trim Set: 1/4" Tapered	1
23	Stuffing Box	1
24	Packing: Flat 3/8 x 7/8	5
25	Packing: Reg 3/8 x 7/8	1
26	Packing Follower	1
27	Seat Cage	1
28	O-Ring: Uniform #210	1
29	O-Ring: Uniform #225	1
30	O-Ring: Uniform #012	1
31	90 deg. Elbow 1/4 NPT Male Female	1
32	Bleeder Filter: 1/4" NPT	1
33	Tank Seal: Washer	1
34	Caution Tag	1
35	Name Plate (NS)	1
36	Drive Screw: Type U #2 x .125 (NS)	4

The specifications contained herein are subject to change without notice and any user of said specifications should verify from the manufacturer that the specifications are currently in effect. Otherwise, the manufacturer assumes no responsibility for the use of specifications which may have been changed and are no longer in effect.

TechnipFMC.com

© TechnipFMC 2018 SSIN061 Issue/Rev. 0.1 (11/18)

TechnipFMC
FMC Technologies, Inc.
13460 Lockwood Road
Building S01
Houston, Texas 77044 USA
P:+1 281.591.4000

USA Operation
1602 Wagner Avenue
Erie, Pennsylvania 16510 USA
P:+1 814.898.5000

Germany Operation
Smith Meter GmbH
Regentstrasse 1
25474 Ellerbek, Germany
P:+49 4101.304.0