



GUIDANT

FCS320 Metering Control System

Unlimited applications. Total control.

Guidant's FCS320 Metering Control System unlocks the full potential of your metering infrastructure.

Whether you're managing a single facility or a complex installation, our metering supervisory control system delivers unmatched flexibility, scalability, and performance.

Designed for both simple and advanced metering solutions, it adapts to your needs today and tomorrow.

Features and Benefits

Unlimited Metering Applications

Connect and manage any number of metering points for water, gas, oil, renewable energy, and more.

Advanced & Simple Solutions

Guidant's Sigma³ Flow Computer supports industry-standard gas and liquid measurement calculations.

Real-Time Monitoring & Control

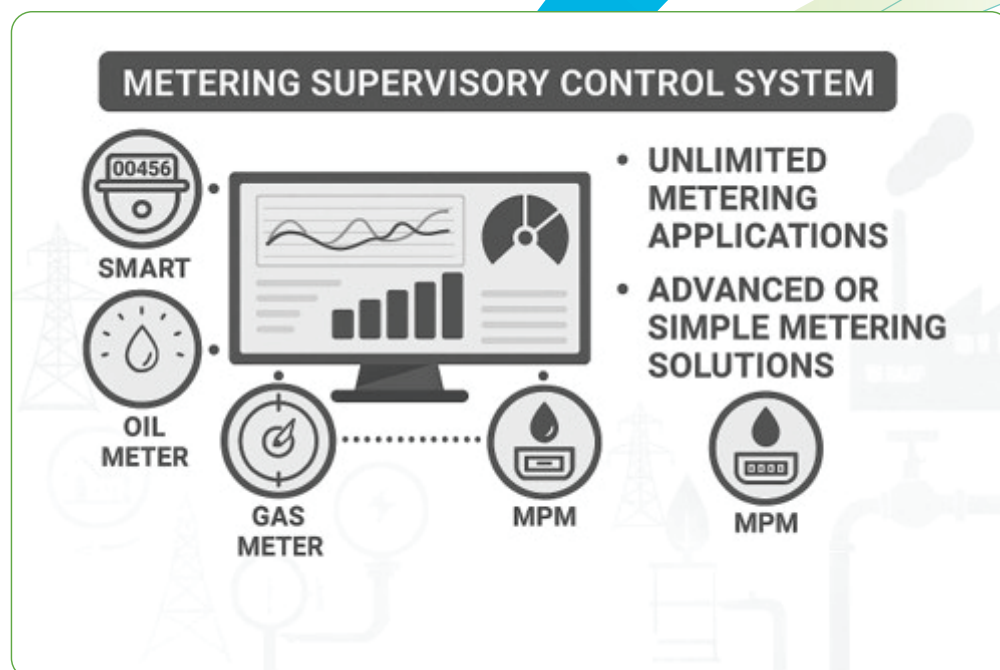
Live dashboards, custom process displays, alarms, and remote access give you full visibility and control at all times.

Modular & Scalable Architecture

Built with cybersecurity and fault-tolerance in mind, ensuring data integrity and uptime.

Integration Ready

Compatible with SCADA, IMS, EC, and other third-party platforms for seamless data exchange and operational synergy.



Technical Specifications

Operating System	<ul style="list-style-type: none">• Microsoft Windows• Linux
Metering Applications and Measurements	<ul style="list-style-type: none">• Onloading, offloading, and continuous metering• Fuel and flare separators• Sampling for analysis and quality measurements• Prover management• Condition-based management• Well-allocation handling• PVT integration and MPFM calibration• Renewable resources (hydrogen, carbon dioxide, and others)
Communication Protocols	<ul style="list-style-type: none">• OPC DA and UA server• Modbus TCP and RTU (client/server)• Secure TCP/IP communication with Sigma³ flow computer
Security Compliance	User access control with role-based authentication

For more information or to discuss purchase options, contact us at metering.services@guidantmeasurement.com.

Measurement Solutions Norway AS
Gomsrud veien 15, 3612 Kongsberg
Norway

About Guidant

As the undisputed leader in liquid and gas custody transfer solutions with the largest global install base, Guidant's legacy is built on more than 90 years of expertise, accuracy, reliability, and best-in-class technologies. We are a private company focused on the measurement solutions business, serving emerging and established energy markets across the globe.

Corporate Website

[GuidantMeasurement.com](https://www.GuidantMeasurement.com)

Guidant Knowledge Base

KB.GuidantMeasurement.com

Email

Guidant_Communications@GuidantMeasurement.com

Measurement Products

Global Sales

+1 814.898.5000

24/7 Service and Support

• Eastern Hemisphere

ResponseCenter.MS@GuidantMeasurement.com

+49 4101 304 333

• Western Hemisphere

MS.ResponseCenter@GuidantMeasurement.com

+1 844.203.4014